

Product datasheet for **TA500639BM**

SLC2A6 Mouse Monoclonal Antibody (HRP conjugated) [Clone ID: OTI7E3]

Product data:

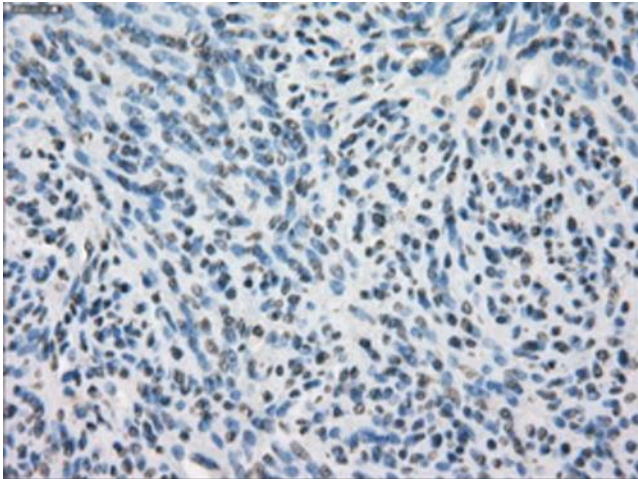
Product Type:	Primary Antibodies
Clone Name:	OTI7E3
Applications:	IF, IHC
Recommended Dilution:	IHC 1:200, IF 1:100
Reactivity:	Human
Host:	Mouse
Isotype:	IgG2a
Clonality:	Monoclonal
Immunogen:	Full-length protein expressed in 293T cell transfected with human SLC2A6 expression vector
Formulation:	PBS (pH 7.3) containing 1% BSA, 50% glycerol.
Concentration:	0.5 mg/ml
Purification:	Purified from mouse ascites fluids or tissue culture supernatant by affinity chromatography (protein A/G)
Conjugation:	HRP
Storage:	Store at -20°C as received.
Stability:	Stable for 12 months from date of receipt.
Predicted Protein Size:	54.5 kDa
Gene Name:	solute carrier family 2 member 6
Database Link:	NP_060055 Entrez Gene 11182 Human Q9UGQ3
Background:	Hexose transport into mammalian cells is catalyzed by a family of membrane proteins, including SLC2A6, that contain 12 transmembrane domains and a number of critical conserved residues.
Synonyms:	GLUT6; GLUT9; HSA011372
Protein Families:	Transmembrane



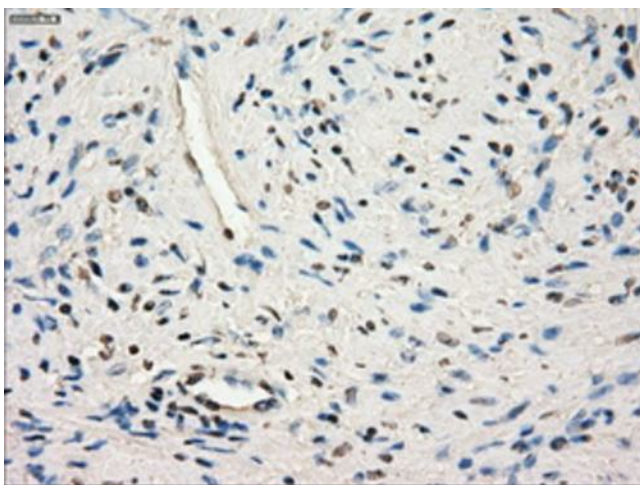
[View online »](#)

Product images:

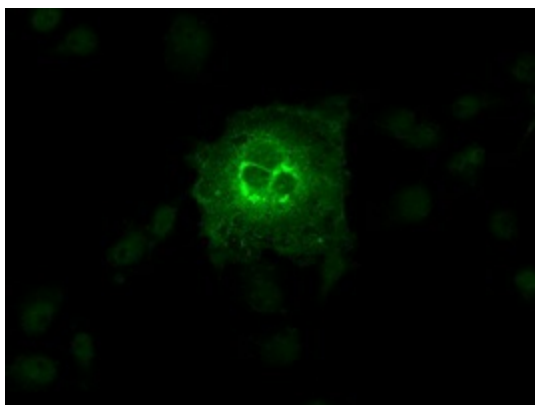
Immunohistochemical staining of paraffin-embedded colon tissue within the normal limits using anti-SLC2A6 mouse monoclonal antibody. Heat-induced epitope retrieval by EDTA solution buffer pH 8.0 at 120°C for 3 min.



Immunohistochemical staining of paraffin-embedded endometrium tissue within the normal limits using anti-SLC2A6 mouse monoclonal antibody. Heat-induced epitope retrieval by EDTA solution buffer pH 8.0 at 120°C for 3 min.



Immunohistochemical staining of paraffin-embedded prostate tissue within the normal limits using anti-SLC2A6 mouse monoclonal antibody. Heat-induced epitope retrieval by EDTA solution buffer pH 8.0 at 120°C for 3 min.



Anti-SLC2A6 mouse monoclonal antibody ([TA500639]) immunofluorescent staining of COS7 cells transiently transfected by pCMV6-ENTRY SLC2A6 ([RC204391]).