

Product datasheet for **TA500638AM**

PDE10A Mouse Monoclonal Antibody (Biotin conjugated) [Clone ID: OTI3G9]

Product data:

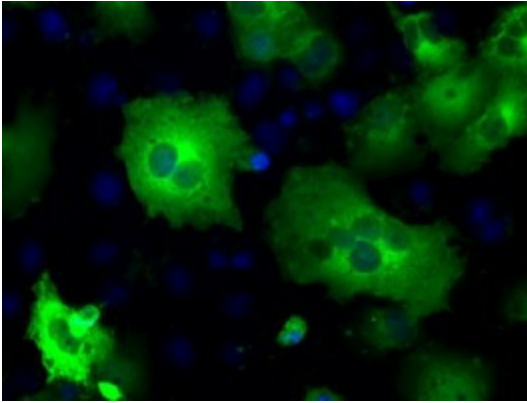
Product Type:	Primary Antibodies
Clone Name:	OTI3G9
Applications:	FC, IF
Recommended Dilution:	IF 1:100, FLOW 1:100
Reactivity:	Human, Mouse, Rat
Host:	Mouse
Isotype:	IgG2b
Clonality:	Monoclonal
Immunogen:	Full length human recombinant protein of human PDE10A (NP_006652) produced in HEK293T cell.
Formulation:	PBS (pH 7.3) containing 1% BSA, 50% glycerol and 0.02% sodium azide.
Concentration:	0.5 mg/ml
Purification:	Purified from mouse ascites fluids or tissue culture supernatant by affinity chromatography (protein A/G)
Conjugation:	Biotin
Storage:	Store at -20°C as received.
Stability:	Stable for 12 months from date of receipt.
Gene Name:	phosphodiesterase 10A
Database Link:	NP_006652 Entrez Gene 63885 Rat Entrez Gene 10846 Human Q9Y233
Background:	Various cellular responses are regulated by the second messengers cAMP and cGMP. Phosphodiesterases, such as PDE10A, eliminate cAMP- and cGMP-mediated intracellular signaling by hydrolyzing the cyclic nucleotide to the corresponding nucleoside 5-prime monophosphate (Fujishige et al., 2000 [PubMed 10998054]). [supplied by OMIM]
Synonyms:	FLJ11894; FLJ25677; HSPDE10A
Protein Families:	Druggable Genome



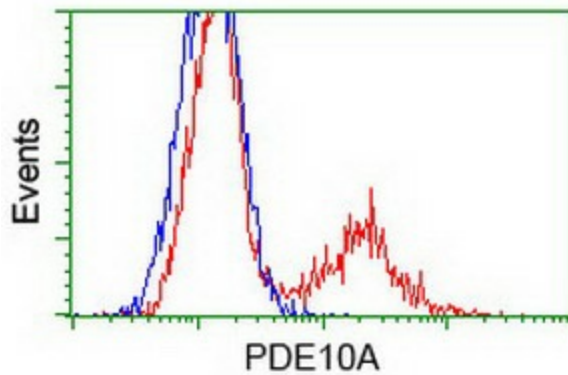
[View online »](#)

Protein Pathways: Progesterone-mediated oocyte maturation, Purine metabolism

Product images:



Anti-PDE10A mouse monoclonal antibody ([TA500638]) immunofluorescent staining of COS7 cells transiently transfected by pCMV6-ENTRY PDE10A ([RC211181]).



HEK293T cells transfected with either [RC211181] overexpress plasmid (Red) or empty vector control plasmid (Blue) were immunostained by anti-PDE10A antibody ([TA500638]), and then analyzed by flow cytometry.