

Product datasheet for **TA500636M**

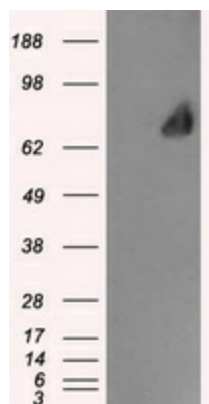
Leukotriene A4 hydrolase (LTA4H) Mouse Monoclonal Antibody [Clone ID: OTI9C5]

Product data:

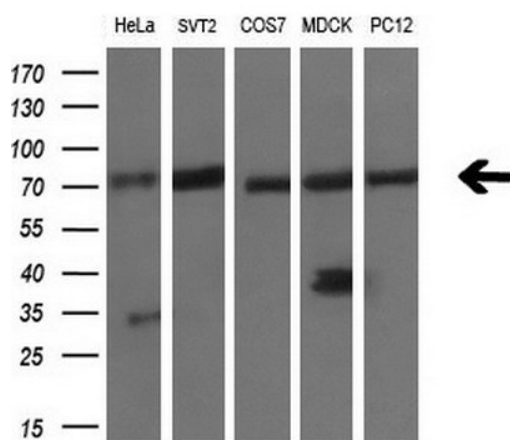
| | |
|-------------------------|--|
| Product Type: | Primary Antibodies |
| Clone Name: | OTI9C5 |
| Applications: | IHC, IP, WB |
| Recommended Dilution: | IHC 1:100~200, WB: 1:200 |
| Reactivity: | Human, Mouse, Rat |
| Host: | Mouse |
| Isotype: | IgG2b |
| Clonality: | Monoclonal |
| Immunogen: | Full-length protein expressed in 293T cell transfected with human LTA4H expression vector |
| Formulation: | PBS (pH 7.3) containing 1% BSA, 50% glycerol and 0.02% sodium azide. |
| Concentration: | 1 mg/ml |
| Purification: | Purified from mouse ascites fluids or tissue culture supernatant by affinity chromatography (protein A/G) |
| Conjugation: | Unconjugated |
| Storage: | Store at -20°C as received. |
| Stability: | Stable for 12 months from date of receipt. |
| Predicted Protein Size: | 69.3 kDa |
| Gene Name: | leukotriene A4 hydrolase |
| Database Link: | NP_000886 Entrez Gene 16993 Mouse Entrez Gene 299732 Rat Entrez Gene 4048 Human P09960 |
| Background: | Hydrolyzes an epoxide moiety of leukotriene A4 (LTA-4) to form leukotriene B4 (LTB-4). The enzyme also has some peptidase activity. |
| Synonyms: | leukotriene A4 hydrolase |
| Protein Families: | Druggable Genome, Protease |
| Protein Pathways: | Arachidonic acid metabolism, Metabolic pathways |


[View online »](#)

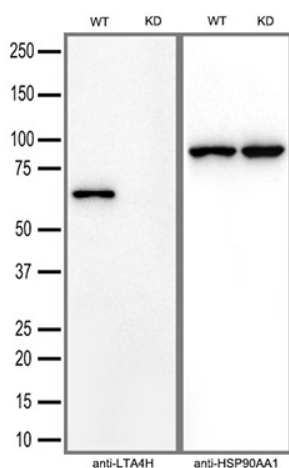
Product images:



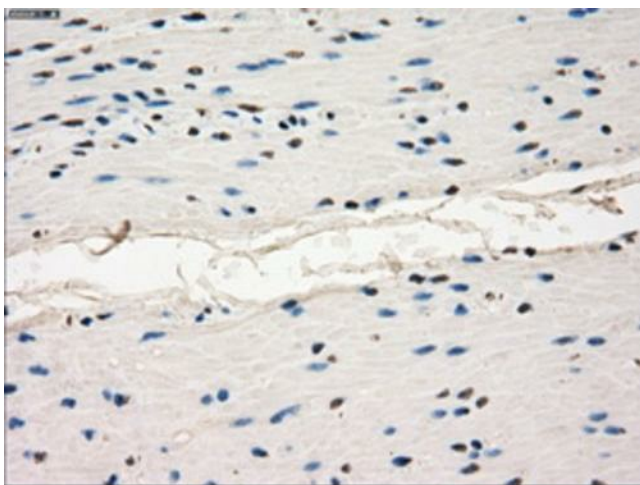
HEK293T cells were transfected with the pCMV6-ENTRY control (Left lane) or pCMV6-ENTRY LTA4H [RC207617], Right lane) cDNA for 48 hrs and lysed. Equivalent amounts of cell lysates (5 ug per lane) were separated by SDS-PAGE and immunoblotted with anti-LTA4H. Positive lysates [LY424467] (100ug) and [LC424467] (20ug) can be purchased separately from OriGene.



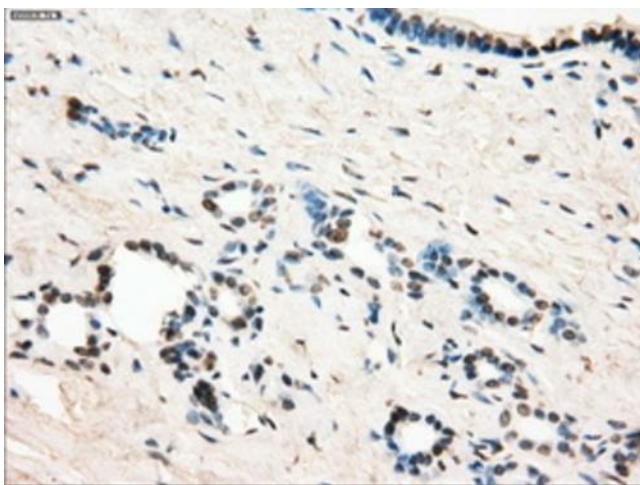
Western blot analysis of extracts (10ug) from 5 different cell lines by using anti-LTA4H monoclonal antibody (1:200).



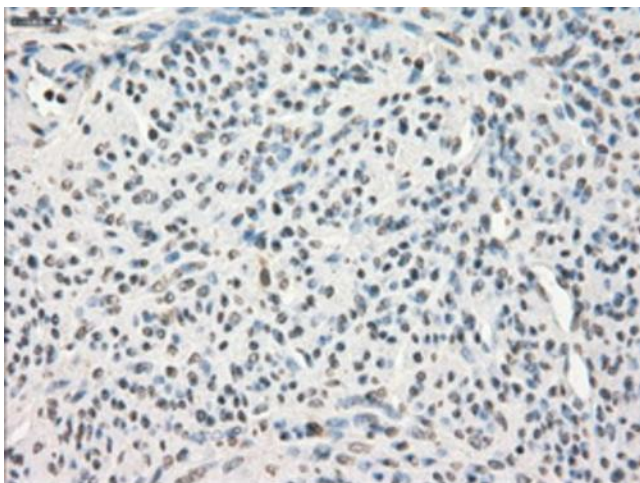
Equivalent amounts of cell lysates (30 ug per lane) of wild-type HeLa cells(WT) and LTA4H-Knockdown HeLa cells(KD) were separated by SDS-PAGE and immunoblotted with anti-LTA4H monoclonal antibody [TA500636](1:5000). Then the blotted membrane was stripped and reprobed with anti-HSP90AA1 antibody as a loading control.



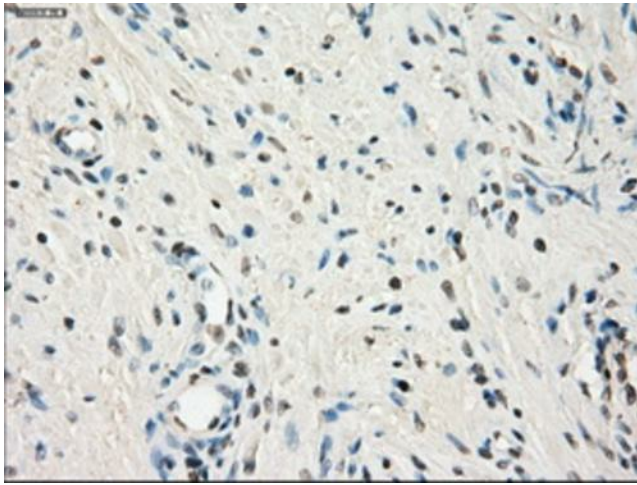
Immunohistochemical staining of paraffin-embedded colon tissue within the normal limits using anti-LTA4Hmouse monoclonal antibody. Heat-induced epitope retrieval by EDTA solution buffer pH 8.0 at 120°C for 3 min.



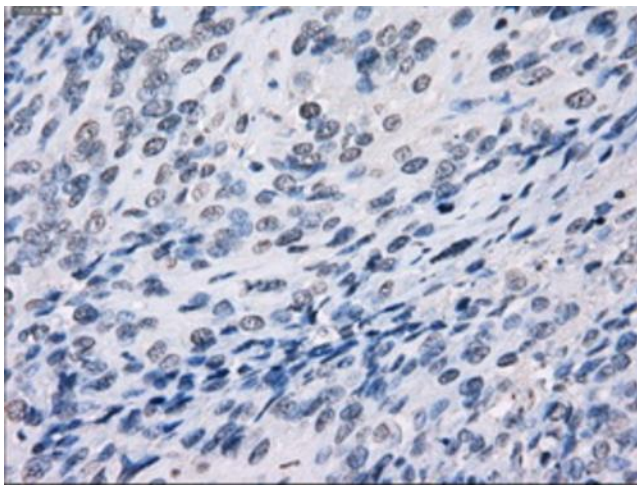
Immunohistochemical staining of paraffin-embedded pancreas tissue within the normal limits using anti-LTA4Hmouse monoclonal antibody. Heat-induced epitope retrieval by EDTA solution buffer pH 8.0 at 120°C for 3 min.



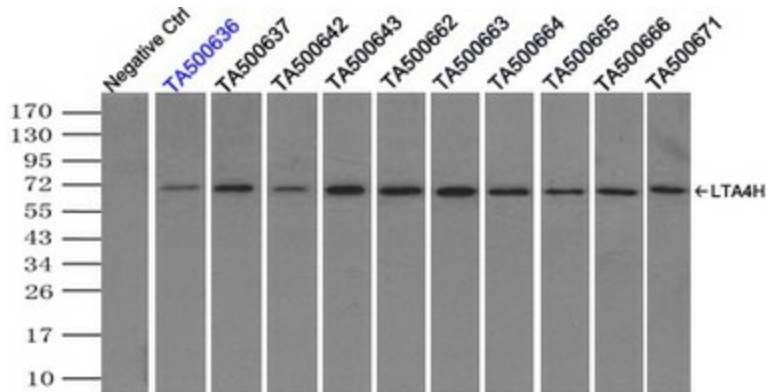
Immunohistochemical staining of paraffin-embedded endometrium tissue within the normal limits using anti-LTA4Hmouse monoclonal antibody. Heat-induced epitope retrieval by EDTA solution buffer pH 8.0 at 120°C for 3 min.



Immunohistochemical staining of paraffin-embedded prostate tissue within the normal limits using anti-LTA4H mouse monoclonal antibody. Heat-induced epitope retrieval by EDTA solution buffer pH 8.0 at 120°C for 3 min.



Immunohistochemical staining of paraffin-embedded Carcinoma of bladder tissue using anti-LTA4H mouse monoclonal antibody. Heat-induced epitope retrieval by EDTA solution buffer pH 8.0 at 120°C for 3 min.



Immunoprecipitation of LTA4H by using TrueMab monoclonal anti-LTA4H antibody (Negative control: IP without adding anti-LTA4H antibody). For each experiment, 500ul of DDK tagged LTA4H overexpression lysates (at 1:5 dilution with HEK293T lysate), 2ug of anti-LTA4H antibody and 20ul (0.1mg) of goat anti-mouse conjugated magnetic beads were mixed and incubated overnight. After extensive wash to remove any non-specific binding, the immuno-precipitated products were analyzed with rabbit anti-DDK polyclonal antibody.