

## Product datasheet for **TA500632BM**

### **LAT2 (SLC7A8) Mouse Monoclonal Antibody (HRP conjugated) [Clone ID: OTI4H10]**

#### **Product data:**

Product Type:	Primary Antibodies
Clone Name:	OTI4H10
Applications:	FC, IF, IP
Recommended Dilution:	IF 1:50~100, FLOW 1:100, IP 2ug/500ul
Reactivity:	Human, Mouse, Rat
Host:	Mouse
Isotype:	IgG1
Clonality:	Monoclonal
Immunogen:	Full length human recombinant protein of human SLC7A8 (NP_036376) produced in HEK293T cell.
Formulation:	PBS (pH 7.3) containing 1% BSA, 50% glycerol.
Concentration:	0.5 mg/ml
Purification:	Purified from mouse ascites fluids or tissue culture supernatant by affinity chromatography (protein A/G)
Conjugation:	HRP
Storage:	Store at -20°C as received.
Stability:	Stable for 12 months from date of receipt.
Predicted Protein Size:	58.4 kDa
Gene Name:	solute carrier family 7 member 8
Database Link:	<a href="#">NP_036376</a> <a href="#">Entrez Gene 50934 Mouse</a> <a href="#">Entrez Gene 84551 Rat</a> <a href="#">Entrez Gene 23428 Human</a> <a href="#">Q9UHI5</a>



[View online »](#)

**Background:**

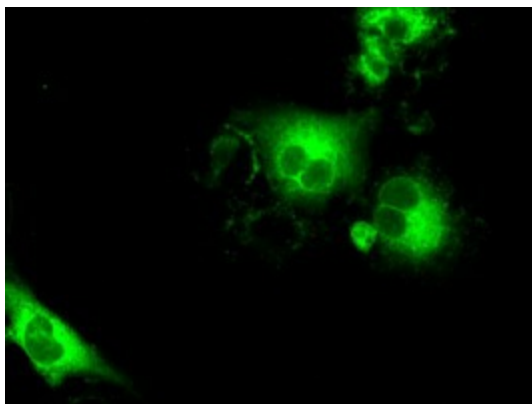
Sodium-independent, high-affinity transport of small and large neutral amino acids such as alanine, serine, threonine, cysteine, phenylalanine, tyrosine, leucine, arginine and tryptophan, when associated with SLC3A2/4F2hc. Acts as an amino acid exchanger. Has higher affinity for L-phenylalanine than LAT1 but lower affinity for glutamine and serine. L-alanine is transported at physiological concentrations. Plays a role in basolateral (re)absorption of neutral amino acids. Involved in the uptake of methylmercury (MeHg) when administered as the L-cysteine or D,L-homocysteine complexes, and hence plays a role in metal ion homeostasis and toxicity. Involved in the cellular activity of small molecular weight nitrosothiols, via the stereoselective transport of L-nitrosocysteine (L-CNSO) across the transmembrane. Plays an essential role in the reabsorption of neutral amino acids from the epithelial cells to the bloodstream in the kidney

**Synonyms:**

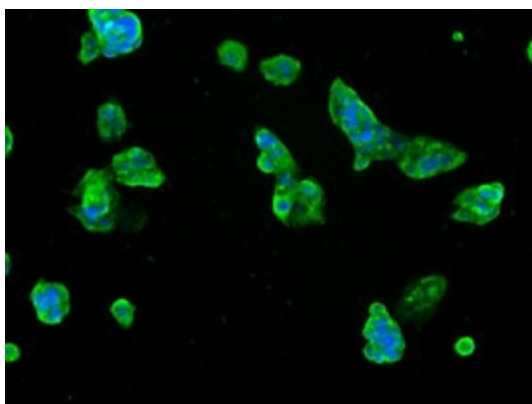
LAT2; LPI-PC1

**Protein Families:**

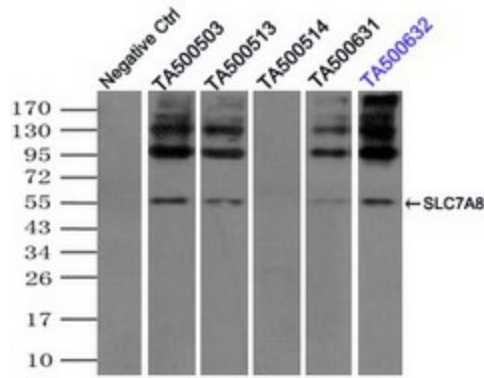
Druggable Genome, Transmembrane

**Product images:**

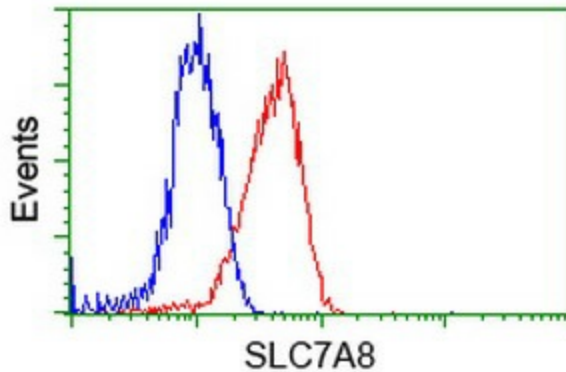
Anti-SLC7A8 mouse monoclonal antibody ([TA500632]) immunofluorescent staining of COS7 cells transiently transfected by pCMV6-ENTRY SLC7A8 ([RC208586]).



Immunofluorescent staining of HepG2 cells using anti-SLC7A8 mouse monoclonal antibody ([TA500632]).



Immunoprecipitation (IP) of SLC7A8 by using TrueMab monoclonal anti-SLC7A8 antibodies (Negative control: IP without adding anti-SLC7A8 antibody.). For each experiment, 500ul of DDK tagged SLC7A8 overexpression lysates (at 1:5 dilution with HEK293T lysate), 2ug of anti-SLC7A8 antibody and 20ul (0.1mg) of goat anti-mouse conjugated magnetic beads were mixed and incubated overnight. After extensive wash to remove any non-specific binding, the immunoprecipitated products were analyzed with rabbit anti-DDK polyclonal antibody.



Flow cytometric Analysis of Jurkat cells, using anti-SLC7A8 antibody ([TA500632]), (Red), compared to a nonspecific negative control antibody, (Blue).