

## Product datasheet for **TA500629M**

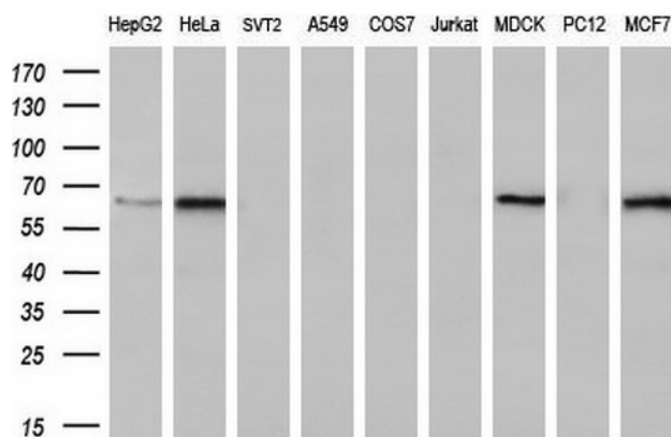
### FRK Mouse Monoclonal Antibody [Clone ID: OTI5F3]

#### Product data:

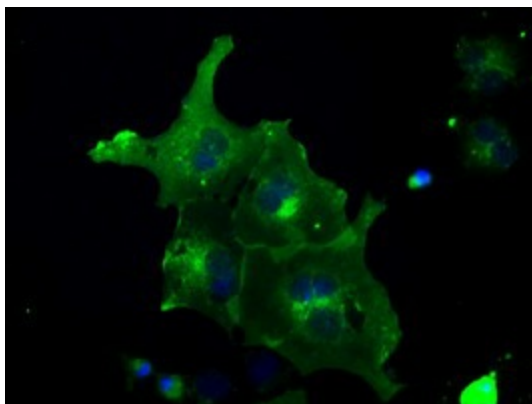
Product Type:	Primary Antibodies
Clone Name:	OTI5F3
Applications:	FC, IF, WB
Recommended Dilution:	IF 1:50~100, FLOW 1:100
Reactivity:	Human, Mouse, Rat
Host:	Mouse
Isotype:	IgG1
Clonality:	Monoclonal
Immunogen:	Full length human recombinant protein of human FRK (NP_002022) produced in HEK293T cell.
Formulation:	PBS (pH 7.3) containing 1% BSA, 50% glycerol and 0.02% sodium azide.
Concentration:	0.82 mg/ml
Purification:	Purified from mouse ascites fluids or tissue culture supernatant by affinity chromatography (protein A/G)
Conjugation:	Unconjugated
Storage:	Store at -20°C as received.
Stability:	Stable for 12 months from date of receipt.
Predicted Protein Size:	58.1 kDa
Gene Name:	fyn related Src family tyrosine kinase
Database Link:	<a href="#">NP_002022</a> <a href="#">Entrez Gene 14302 Mouse</a> <a href="#">Entrez Gene 79209 Rat</a> <a href="#">Entrez Gene 2444 Human</a> <a href="#">P42685</a>
Background:	The protein encoded by this gene belongs to the TYR family of protein kinases. This tyrosine kinase is a nuclear protein and may function during G1 and S phase of the cell cycle and suppress growth. [provided by RefSeq]
Synonyms:	GTK; PTK5; RAK
Protein Families:	Druggable Genome, Protein Kinase


[View online »](#)

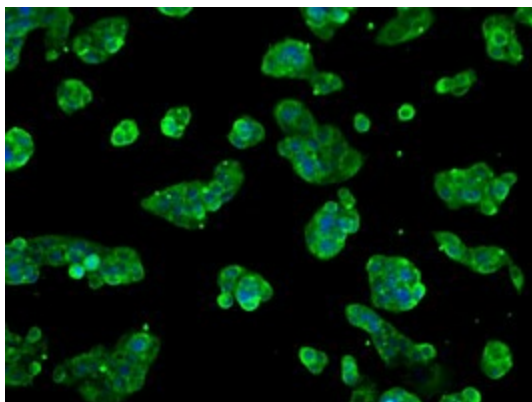
## Product images:



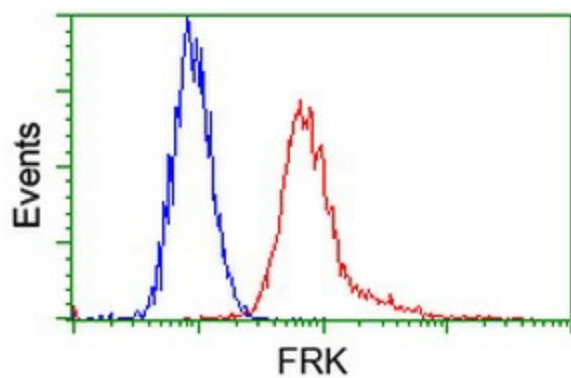
Western blot analysis of extracts (35ug) from 9 different cell lines by using anti-FRK monoclonal antibody (HepG2: human; HeLa: human; SVT2: mouse; A549: human; COS7: monkey; Jurkat: human; MDCK: canine; PC12: rat; MCF7: human) (1:200).



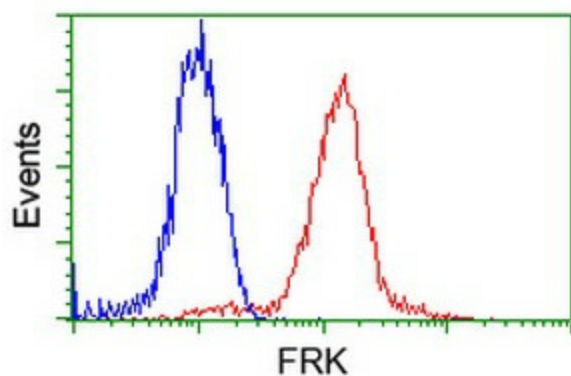
Anti-FRK mouse monoclonal antibody ([TA500629]) immunofluorescent staining of COS7 cells transiently transfected by pCMV6-ENTRY FRK ([RC204460]).



Immunofluorescent staining of HepG2 cells using anti-FRK mouse monoclonal antibody ([TA500629]).



Flow cytometric Analysis of HeLa cells, using anti-FRK antibody ([TA500629]), (Red), compared to a nonspecific negative control antibody, (Blue).



Flow cytometric Analysis of Jurkat cells, using anti-FRK antibody ([TA500629]), (Red), compared to a nonspecific negative control antibody, (Blue).