

Name: anti-PDE10A mouse monoclonal antibody, clone OTI1C9 (formerly 1C9)**Catalog: TA500625****Product Data Sheet - TRUEMAB**

Components:	• anti-PDE10A mouse monoclonal antibody, clone OTI1C9 (formerly 1C9) (TA500625)
Amount:	100ul
Immunogen:	Full-length protein expressed in 293T cell transfected with human PDE10A expression vector
Host:	Mouse
Isotype:	IgG2b
Species Reactivity:	Human
Guaranteed Applications:	WB, IHC
Suggested Dilutions:	WB 1:500, IHC 1:50,
Concentration:	1.00mg/ml
Buffer:	PBS (pH 7.3) containing 1% BSA, 50% glycerol and 0.02% sodium azide.
Purification:	Purified from cell culture supernatant by affinity chromatography
Storage Condition:	Shipped at -20C or with ice packs. Upon delivery store at -20C. Dilute in PBS (pH7.3) if necessary. Stable for 12 months from date of receipt. Avoid repeated freeze-thaws.

Target

Target Name:	phosphodiesterase 10A
Alternative Name:	ADSD2 HSPDE10A IOLOD PDE10A19
Database Link:	NP_006652 Entrez Gene 10846 Human
Function:	Phosphodiesterases (PDEs) are a family of related phosphohydrolyases that selectively catalyze the hydrolysis of 3'cyclic phosphate bonds in adenosine and/or guanine 3',5' cyclic monophosphate (cAMP and/or cGMP). They regulate the cellular levels, localization and duration of action of these second messengers by controlling the rate of their degradation. There are 11 subtypes of PDEs, named PDE1-11; PDE4, 7 and 8 selectively degrade cAMP, PDE5, 6 and 9 selectively degrade cGMP and PDE1, 2, 3, 10 and 11 degrade both cyclic nucleotides. PDEs are expressed ubiquitously, with each subtype having a specific tissue distribution. These enzymes are involved in many signal transduction pathways and their

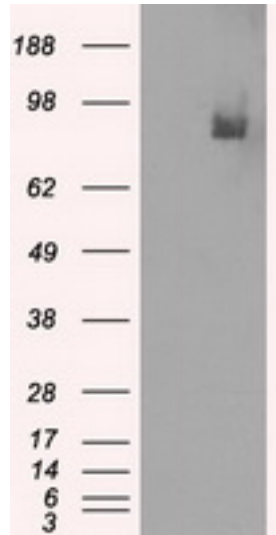
This product is to be used for laboratory only. Not for diagnostic or therapeutic use.

functions include vascular smooth muscle proliferation and contraction, cardiac contractility, platelet aggregation, hormone secretion, immune cell activation, and they are involved in learning and memory.

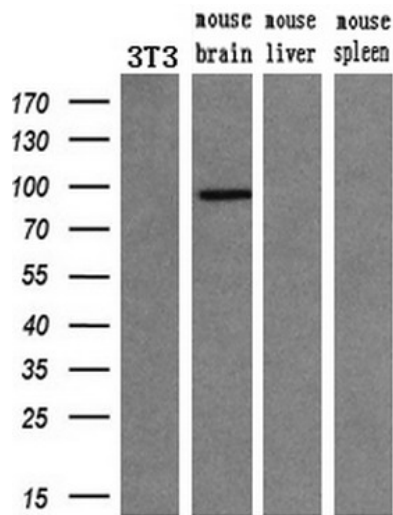
This product is to be used for laboratory only. Not for diagnostic or therapeutic use.

© 2017 OriGene Technologies, Inc. 9620 Medical Center Dr., Suite 200, Rockville, MD 20850

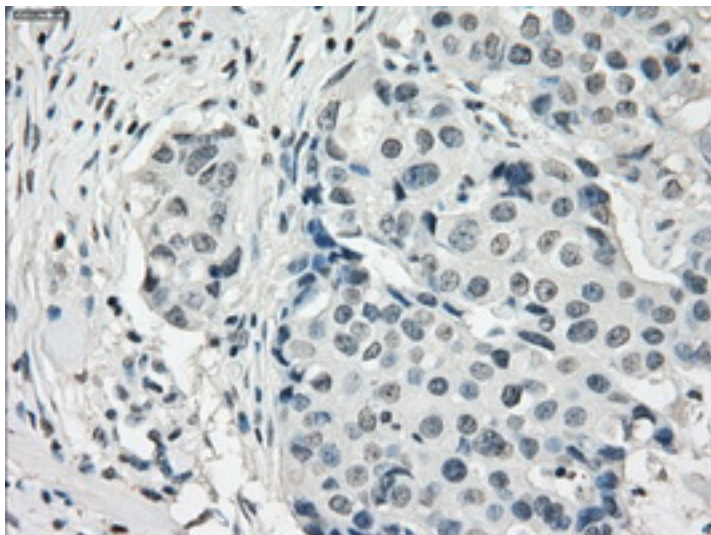
Validation Data



HEK293T cells were transfected with the pCMV6-ENTRY control (Left lane) or pCMV6-ENTRY PDE10A (RC211181, Right lane) cDNA for 48 hrs and lysed. Equivalent amounts of cell lysates (5 ug per lane) were separated by SDS-PAGE and immunoblotted with anti-PDE10A .



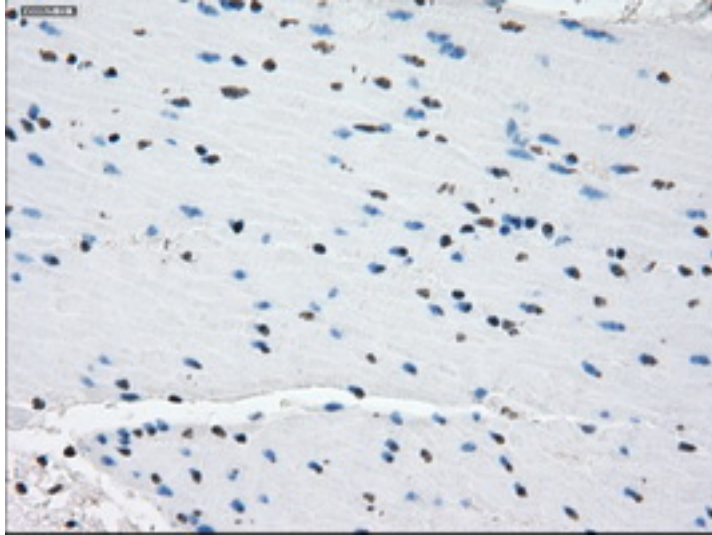
Western blot analysis of extracts (10ug) from a mouse cell line and 3 different mouse tissues by using anti-PDE10A monoclonal antibody.(1:200)



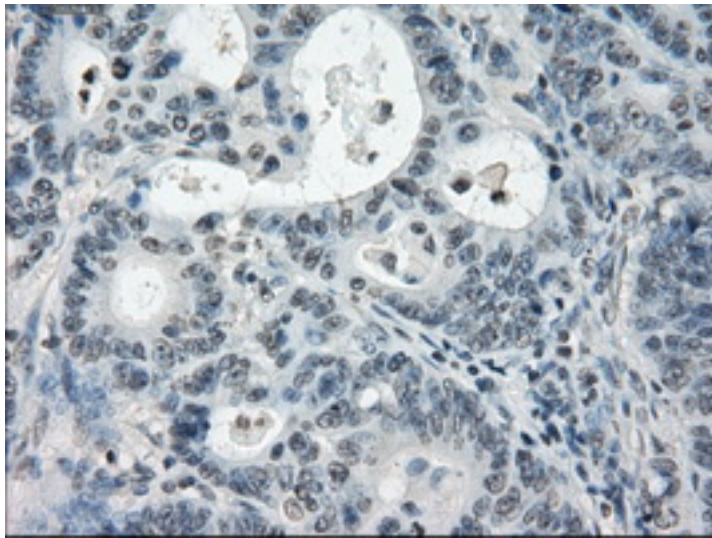
Immunohistochemical staining of paraffin-embedded Adenocarcinoma of breast tissue using anti-PDE10A mouse monoclonal antibody. (Heat-induced epitope retrieval by 10mM citric buffer, pH6.0, 100C for 10min, TA500625, Dilution 1:50)

This product is to be used for laboratory only. Not for diagnostic or therapeutic use.

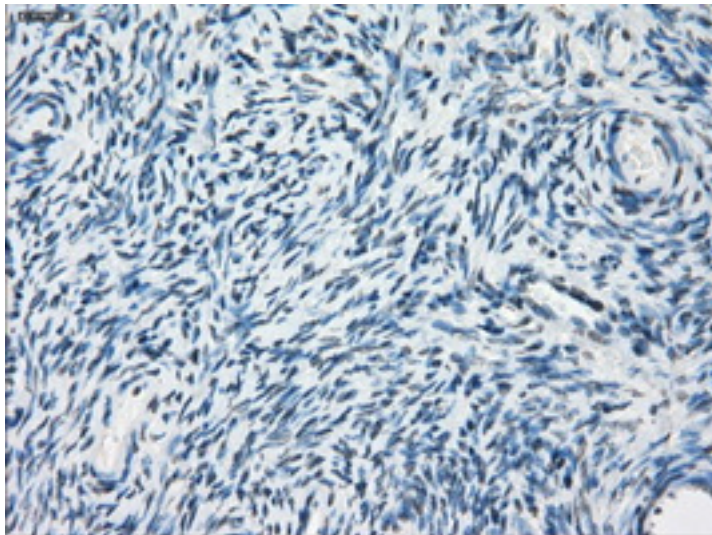
© 2017 OriGene Technologies, Inc. 9620 Medical Center Dr., Suite 200, Rockville, MD 20850



Immunohistochemical staining of paraffin-embedded colon tissue within the normal limits using anti-PDE10A mouse monoclonal antibody. (Heat-induced epitope retrieval by 10mM citric buffer, pH6.0, 100C for 10min, TA500625, Dilution 1:50)



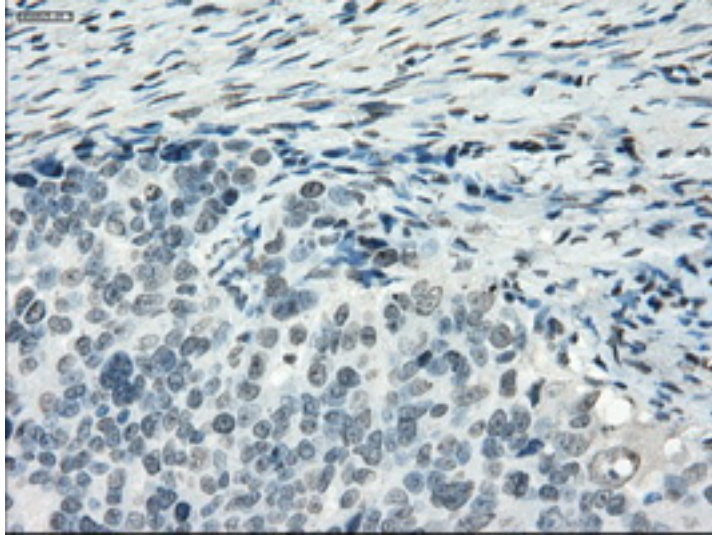
Immunohistochemical staining of paraffin-embedded Adenocarcinoma of colon tissue using anti-PDE10A mouse monoclonal antibody. (Heat-induced epitope retrieval by 10mM citric buffer, pH6.0, 100C for 10min, TA500625, Dilution 1:50)



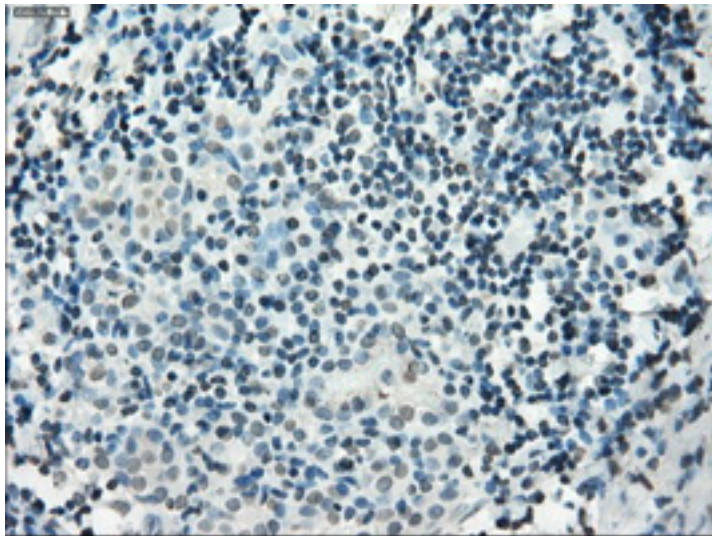
Immunohistochemical staining of paraffin-embedded Ovary tissue within the normal limits using anti-PDE10A mouse monoclonal antibody. (Heat-induced epitope retrieval by 10mM citric buffer, pH6.0, 100C for 10min, TA500625, Dilution 1:50)

This product is to be used for laboratory only. Not for diagnostic or therapeutic use.

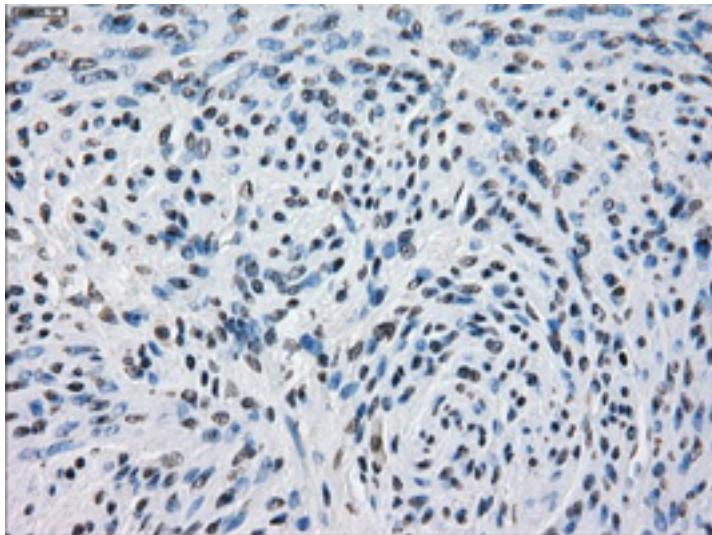
© 2017 OriGene Technologies, Inc. 9620 Medical Center Dr., Suite 200, Rockville, MD 20850



Immunohistochemical staining of paraffin-embedded Adenocarcinoma of ovary tissue using anti-PDE10A mouse monoclonal antibody. (Heat-induced epitope retrieval by 10mM citric buffer, pH6.0, 100C for 10min, TA500625, Dilution 1:50)



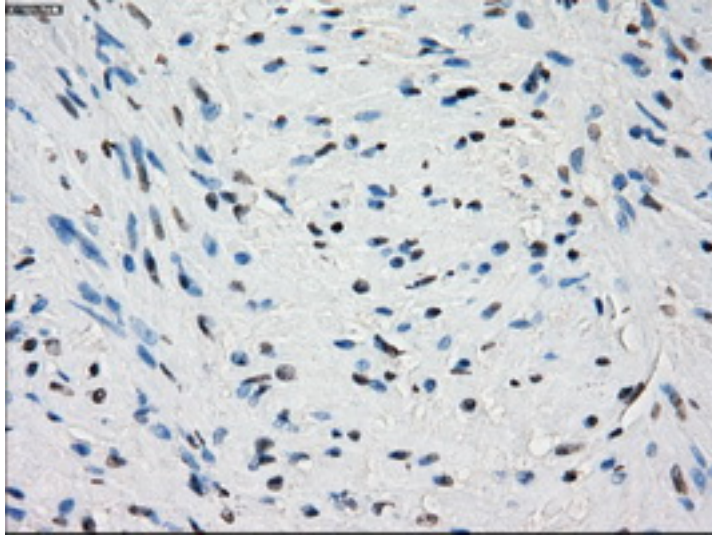
Immunohistochemical staining of paraffin-embedded Carcinoma of thyroid tissue using anti-PDE10A mouse monoclonal antibody. (Heat-induced epitope retrieval by 10mM citric buffer, pH6.0, 100C for 10min, TA500625, Dilution 1:50)



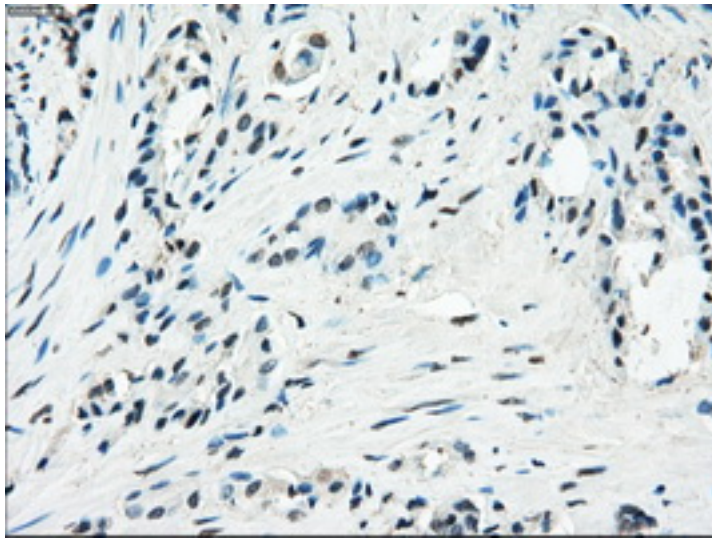
Immunohistochemical staining of paraffin-embedded endometrium tissue within the normal limits using anti-PDE10A mouse monoclonal antibody. (Heat-induced epitope retrieval by 10mM citric buffer, pH6.0, 100C for 10min, TA500625, Dilution 1:50)

This product is to be used for laboratory only. Not for diagnostic or therapeutic use.

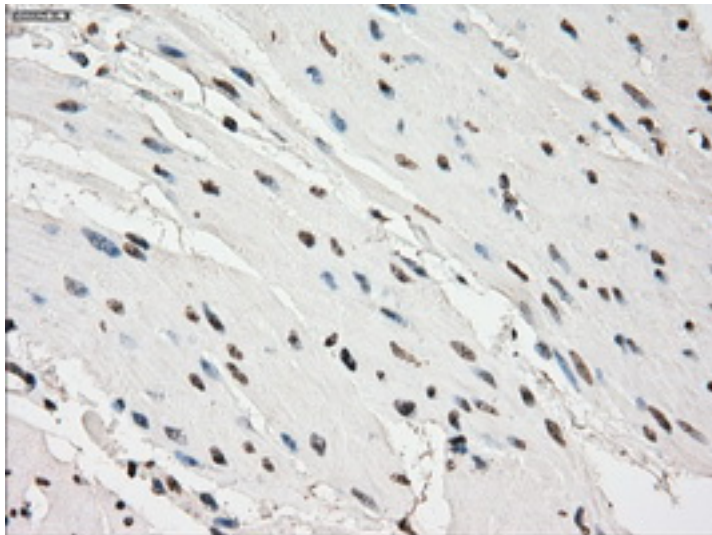
© 2017 OriGene Technologies, Inc. 9620 Medical Center Dr., Suite 200, Rockville, MD 20850



Immunohistochemical staining of paraffin-embedded prostate tissue within the normal limits using anti-PDE10A mouse monoclonal antibody. (Heat-induced epitope retrieval by 10mM citric buffer, pH6.0, 100C for 10min, TA500625, Dilution 1:50)



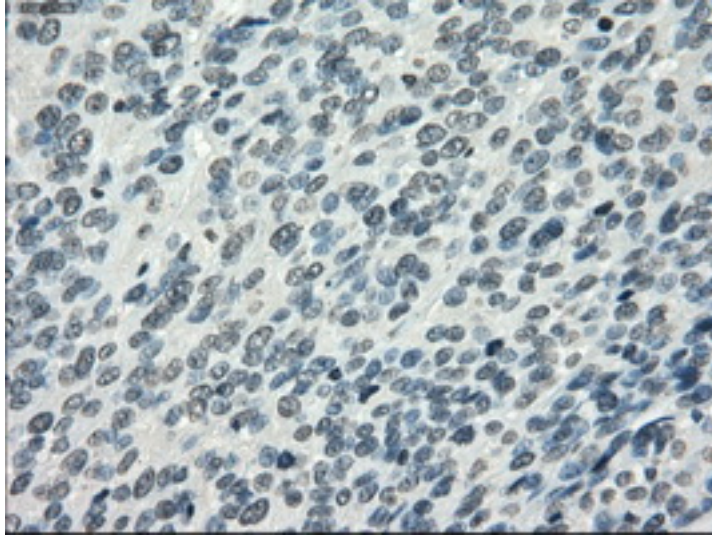
Immunohistochemical staining of paraffin-embedded Carcinoma of prostate tissue using anti-PDE10A mouse monoclonal antibody. (Heat-induced epitope retrieval by 10mM citric buffer, pH6.0, 100C for 10min, TA500625, Dilution 1:50)



Immunohistochemical staining of paraffin-embedded bladder tissue within the normal limits using anti-PDE10A mouse monoclonal antibody. (Heat-induced epitope retrieval by 10mM citric buffer, pH6.0, 100C for 10min, TA500625, Dilution 1:50)

This product is to be used for laboratory only. Not for diagnostic or therapeutic use.

© 2017 OriGene Technologies, Inc. 9620 Medical Center Dr., Suite 200, Rockville, MD 20850



Immunohistochemical staining of paraffin-embedded Carcinoma of bladder tissue using anti-PDE10A mouse monoclonal antibody. (Heat-induced epitope retrieval by 10mM citric buffer, pH6.0, 100C for 10min, TA500625, Dilution 1:50)

* More validation images may be available on our website: <http://www.origene.com/antibody/TA500625.aspx>

This product is to be used for laboratory only. Not for diagnostic or therapeutic use.

© 2017 OriGene Technologies, Inc. 9620 Medical Center Dr., Suite 200, Rockville, MD 20850
