

Product datasheet for **TA500617M**

MAD2 (MAD2L1) Mouse Monoclonal Antibody [Clone ID: OTI4D2]

Product data:

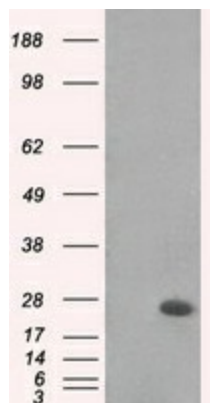
Product Type:	Primary Antibodies
Clone Name:	OTI4D2
Applications:	IF, WB
Recommended Dilution:	WB 1:1000, IF 1:100
Reactivity:	Human, Mouse, Rat
Host:	Mouse
Isotype:	IgG2a
Clonality:	Monoclonal
Immunogen:	Full length human recombinant protein of human MAD2L1 (NP_002349) produced in HEK293T cell.
Formulation:	PBS (pH 7.3) containing 1% BSA, 50% glycerol and 0.02% sodium azide.
Concentration:	1 mg/ml
Purification:	Purified from mouse ascites fluids or tissue culture supernatant by affinity chromatography (protein A/G)
Conjugation:	Unconjugated
Storage:	Store at -20°C as received.
Stability:	Stable for 12 months from date of receipt.
Predicted Protein Size:	23.3 kDa
Gene Name:	mitotic arrest deficient 2 like 1
Database Link:	NP_002349 Entrez Gene 56150 Mouse Entrez Gene 297176 Rat Entrez Gene 4085 Human Q13257
Background:	MAD2L1 is a component of the mitotic spindle assembly checkpoint that prevents the onset of anaphase until all chromosomes are properly aligned at the metaphase plate. MAD2L1 is related to the MAD2L2 gene located on chromosome 1. A MAD2 pseudogene has been mapped to chromosome 14. [provided by RefSeq]
Synonyms:	HSMAD2; MAD2


[View online »](#)

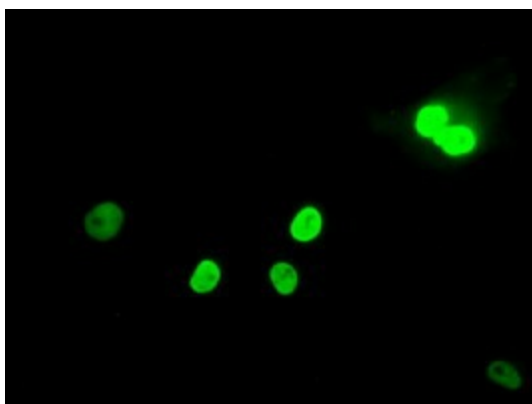
Protein Families: Druggable Genome

Protein Pathways: Cell cycle, Oocyte meiosis, Progesterone-mediated oocyte maturation

Product images:



HEK293T cells were transfected with the pCMV6-ENTRY control (Cat# [PS100001], Left lane) or pCMV6-ENTRY MAD2L1 (Cat# [RC203273], Right lane) cDNA for 48 hrs and lysed. Equivalent amounts of cell lysates (5 ug per lane) were separated by SDS-PAGE and immunoblotted with anti-MAD2L1 (Cat# [TA500617]). Positive lysates [LY400849] (100ug) and [LC400849] (20ug) can be purchased separately from OriGene.



Anti-MAD2L1 mouse monoclonal antibody ([TA500617]) immunofluorescent staining of COS7 cells transiently transfected by pCMV6-ENTRY MAD2L1 ([RC203273]).