

## Product datasheet for **TA500605**

### PPP1R7 Mouse Monoclonal Antibody [Clone ID: OTI3E7]

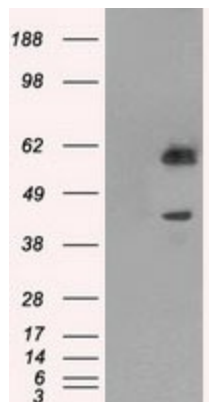
#### Product data:

Product Type:	Primary Antibodies
Clone Name:	OTI3E7
Applications:	WB
Recommended Dilution:	WB 1:2000
Reactivity:	Human, Dog, Mouse, Rat
Host:	Mouse
Isotype:	IgG2a
Clonality:	Monoclonal
Immunogen:	Full length human recombinant protein of human PPP1R7 (NP_002703) produced in HEK293T cell.
Formulation:	PBS (pH 7.3) containing 1% BSA, 50% glycerol and 0.02% sodium azide.
Concentration:	1.5 mg/ml
Purification:	Purified from mouse ascites fluids or tissue culture supernatant by affinity chromatography (protein A/G)
Conjugation:	Unconjugated
Storage:	Store at -20°C as received.
Stability:	Stable for 12 months from date of receipt.
Predicted Protein Size:	41.6 kDa
Gene Name:	protein phosphatase 1 regulatory subunit 7
Database Link:	<a href="#">NP_002703</a> <a href="#">Entrez Gene 301618 Rat</a> <a href="#">Entrez Gene 100855698 Dog</a> <a href="#">Entrez Gene 5510 Human Q15435</a>
Background:	Regulatory subunit of protein phosphatase 1
Synonyms:	SDS22
Protein Families:	Druggable Genome, Phosphatase

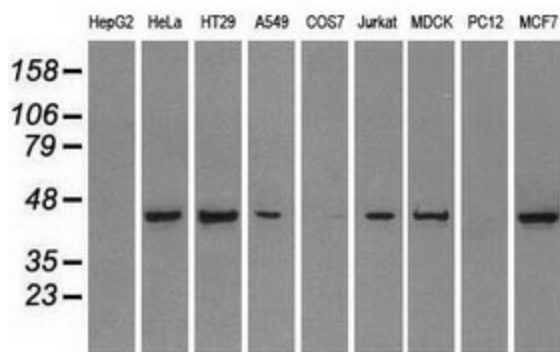


[View online »](#)

**Product images:**



HEK293T cells were transfected with the pCMV6-ENTRY control (Left lane) or pCMV6-ENTRY PPP1R7 ([RC201634], Right lane) cDNA for 48 hrs and lysed. Equivalent amounts of cell lysates (5 ug per lane) were separated by SDS-PAGE and immunoblotted with anti-PPP1R7. Positive lysates [LY400956] (100ug) and [LC400956] (20ug) can be purchased separately from OriGene.



Western blot analysis of extracts (35ug) from 9 different cell lines by using anti-PPP1R7 monoclonal antibody.