

Product datasheet for **TA500604S**

Glucose Transporter 5 GLUT5 (SLC2A5) Mouse Monoclonal Antibody [Clone ID: OTI9G8]

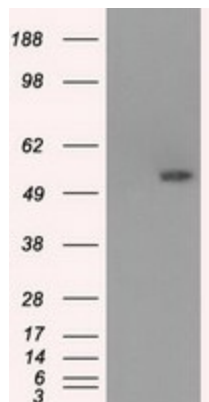
Product data:

Product Type:	Primary Antibodies
Clone Name:	OTI9G8
Applications:	IF, IHC, WB
Recommended Dilution:	WB 1:1000~2000, IHC 1:50, IF 1:100
Reactivity:	Human
Host:	Mouse
Isotype:	IgG1
Clonality:	Monoclonal
Immunogen:	Full length human recombinant protein of human SLC2A5 (NP_003030) produced in HEK293T cell.
Formulation:	PBS (pH 7.3) containing 1% BSA, 50% glycerol and 0.02% sodium azide.
Concentration:	0.56 mg/ml
Purification:	Purified from mouse ascites fluids or tissue culture supernatant by affinity chromatography (protein A/G)
Conjugation:	Unconjugated
Storage:	Store at -20°C as received.
Stability:	Stable for 12 months from date of receipt.
Predicted Protein Size:	55.0 kDa
Gene Name:	solute carrier family 2 member 5
Database Link:	NP_003030 Entrez Gene 6518 Human P22732
Background:	Cytochalasin B-sensitive carrier. Seems to function primarily as a fructose transporter.
Synonyms:	GLUT-5; GLUT5
Protein Families:	Transmembrane

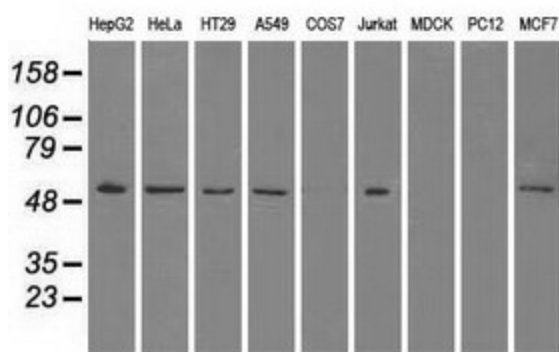


[View online »](#)

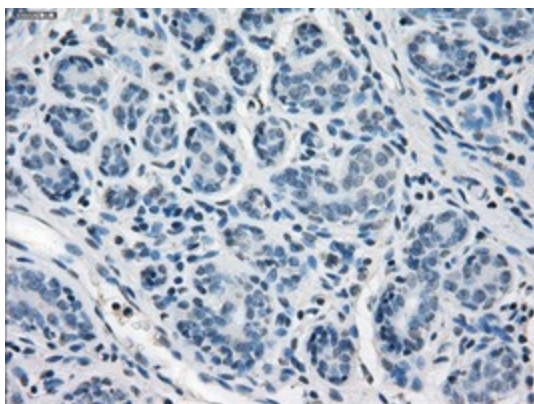
Product images:



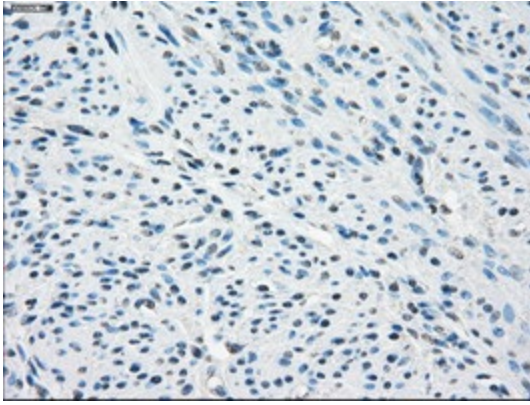
HEK293T cells were transfected with the pCMV6-ENTRY control (Left lane) or pCMV6-ENTRY SLC2A5 ([RC200418], Right lane) cDNA for 48 hrs and lysed. Equivalent amounts of cell lysates (5 ug per lane) were separated by SDS-PAGE and immunoblotted with anti-SLC2A5. Positive lysates [LY401061] (100ug) and [LC401061] (20ug) can be purchased separately from OriGene.



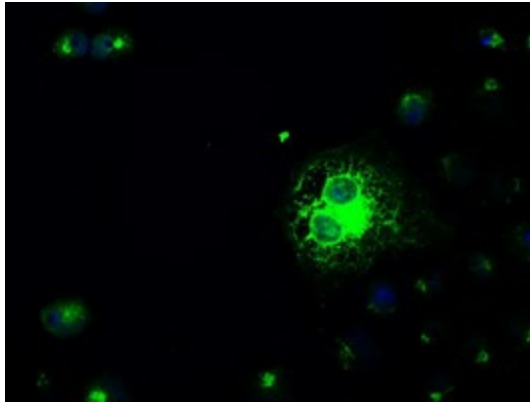
Western blot analysis of extracts (35ug) from 9 different cell lines by using anti-SLC2A5 monoclonal antibody.



Immunohistochemical staining of paraffin-embedded Human breast tissue within the normal limits using anti-SLC2A5 mouse monoclonal antibody. (Heat-induced epitope retrieval by 10mM citric buffer, pH6.0, 100°C for 10min, [TA500604])



Immunohistochemical staining of paraffin-embedded Human endometrium tissue within the normal limits using anti-SLC2A5 mouse monoclonal antibody. (Heat-induced epitope retrieval by 10mM citric buffer, pH6.0, 100°C for 10min, [TA500604])



Anti-SLC2A5 mouse monoclonal antibody ([TA500604]) immunofluorescent staining of COS7 cells transiently transfected by pCMV6-ENTRY SLC2A5 ([RC200418]).