

## Product datasheet for TA500601

### Cytochrome P450 Reductase (POR) Mouse Monoclonal Antibody [Clone ID: OTI6C4]

#### Product data:

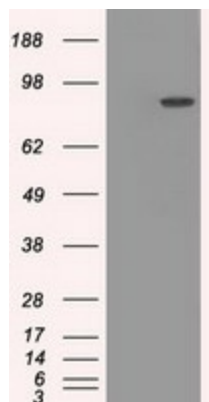
Product Type:	Primary Antibodies
Clone Name:	OTI6C4
Applications:	FC, IF, IHC, WB
Recommended Dilution:	WB 1:2000, IHC 1:50, IF 1:50~100, FLOW 1:100
Reactivity:	Human, Mouse, Rat
Host:	Mouse
Isotype:	IgG1
Clonality:	Monoclonal
Immunogen:	Full length human recombinant protein of human POR (NP_000932) produced in HEK293T cell.
Formulation:	PBS (pH 7.3) containing 1% BSA, 50% glycerol and 0.02% sodium azide.
Concentration:	0.74 mg/ml
Purification:	Purified from mouse ascites fluids or tissue culture supernatant by affinity chromatography (protein A/G)
Storage:	Store at -20°C as received.
Stability:	Stable for 12 months from date of receipt.
Predicted Protein Size:	76.9 kDa
Gene Name:	cytochrome p450 oxidoreductase
Database Link:	<a href="#">NP_000932 Entrez Gene 18984 Mouse</a> <a href="#">Entrez Gene 29441 Rat</a> <a href="#">Entrez Gene 5447 Human</a>
Background:	This gene encodes an endoplasmic reticulum membrane oxidoreductase with an FAD-binding domain and a flavodoxin-like domain. The protein binds two cofactors, FAD and FMN, which allow it to donate electrons directly from NADPH to all microsomal P450 enzymes. Mutations in this gene have been associated with various diseases, including apparent combined P450C17 and P450C21 deficiency, amenorrhea and disordered steroidogenesis, congenital adrenal hyperplasia and Antley-Bixler syndrome. [provided by RefSeq]
Synonyms:	CPR; CYPOR; P450R



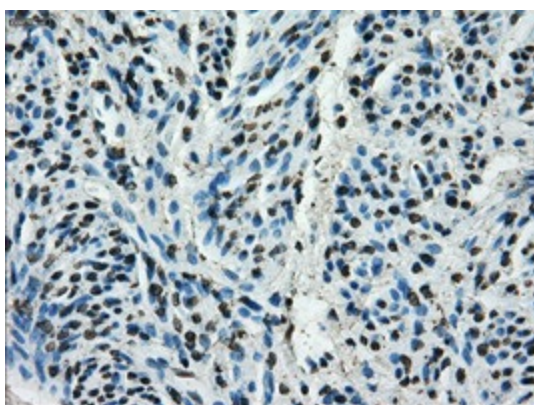
[View online »](#)

Protein Families: Druggable Genome, P450, Transmembrane

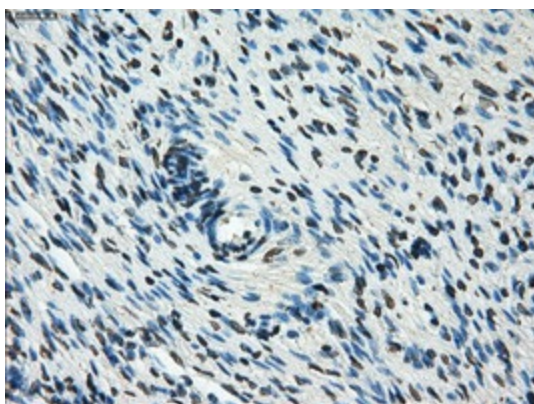
### Product images:



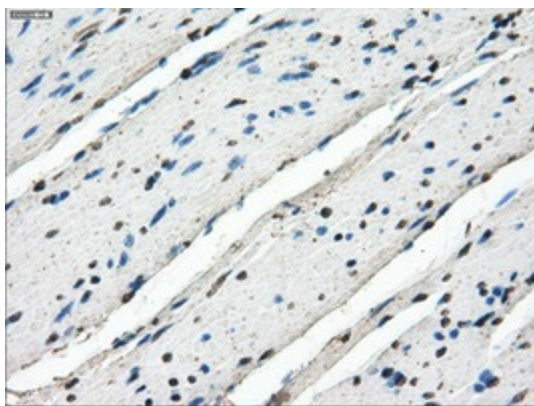
HEK293T cells were transfected with the pCMV6-ENTRY control (Left lane) or pCMV6-ENTRY POR ([RC202172], Right lane) cDNA for 48 hrs and lysed. Equivalent amounts of cell lysates (5 ug per lane) were separated by SDS-PAGE and immunoblotted with anti-POR. Positive lysates [LY424436] (100ug) and [LC424436] (20ug) can be purchased separately from OriGene.



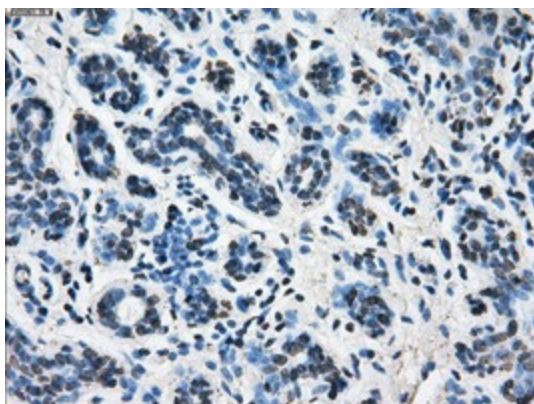
Immunohistochemical staining of paraffin-embedded Human endometrium tissue within the normal limits using anti-POR mouse monoclonal antibody. (Heat-induced epitope retrieval by 10mM citric buffer, pH6.0, 100°C for 10min, TA500601)



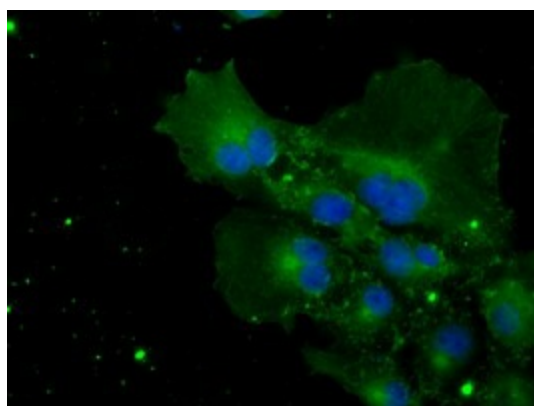
Immunohistochemical staining of paraffin-embedded Human Ovary tissue within the normal limits using anti-POR mouse monoclonal antibody. (Heat-induced epitope retrieval by 10mM citric buffer, pH6.0, 100°C for 10min, TA500601)



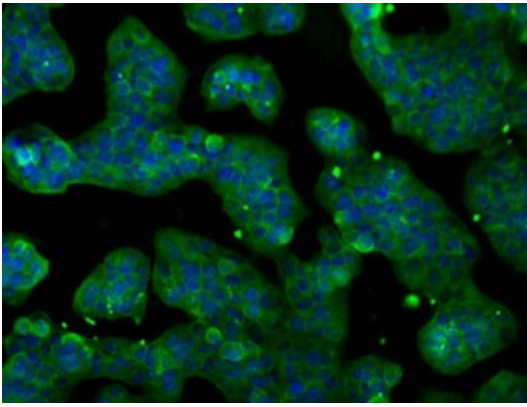
Immunohistochemical staining of paraffin-embedded Human colon tissue within the normal limits using anti-POR mouse monoclonal antibody. (Heat-induced epitope retrieval by 10mM citric buffer, pH6.0, 100°C for 10min, TA500601)



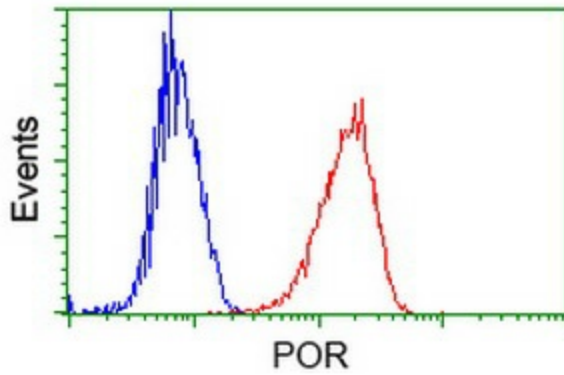
Immunohistochemical staining of paraffin-embedded Human breast tissue within the normal limits using anti-POR mouse monoclonal antibody. (Heat-induced epitope retrieval by 10mM citric buffer, pH6.0, 100°C for 10min, TA500601)



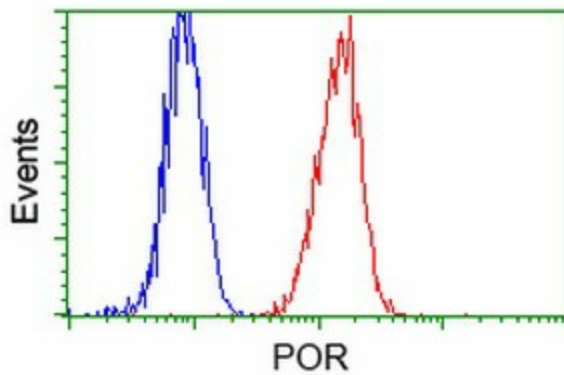
Anti-POR mouse monoclonal antibody (TA500601) immunofluorescent staining of COS7 cells transiently transfected by pCMV6-ENTRY POR ([RC202172]).



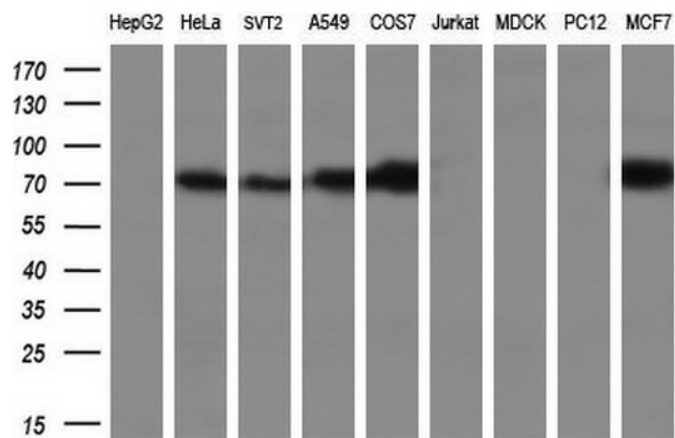
Immunofluorescent staining of HeLa cells using anti-POR mouse monoclonal antibody (TA500601).



Flow cytometric Analysis of Jurkat cells, using anti-POR antibody (TA500601), (Red), compared to a nonspecific negative control antibody, (Blue).



Flow cytometric Analysis of HeLa cells, using anti-POR antibody (TA500601), (Red), compared to a nonspecific negative control antibody, (Blue).



Western blot analysis of extracts (35ug) from 9 different cell lines by using anti-POR monoclonal antibody (HepG2: human; HeLa: human; SVT2: mouse; A549: human; COS7: monkey; Jurkat: human; MDCK: canine; PC12: rat; MCF7: human) (1:200).