

## Product datasheet for **TA500591BM**

### Cytochrome P450 Reductase (POR) Mouse Monoclonal Antibody (HRP conjugated) [Clone ID: OTI4G2]

#### Product data:

Product Type:	Primary Antibodies
Clone Name:	OTI4G2
Applications:	FC, IHC, WB
Recommended Dilution:	WB 1:500, IHC 1:50, FLOW 1:100
Reactivity:	Human, Mouse, Rat
Host:	Mouse
Isotype:	IgG1
Clonality:	Monoclonal
Immunogen:	Full length human recombinant protein of human POR (NP_000932) produced in HEK293T cell.
Formulation:	PBS (pH 7.3) containing 1% BSA, 50% glycerol.
Concentration:	0.5 mg/ml
Purification:	Purified from mouse ascites fluids or tissue culture supernatant by affinity chromatography (protein A/G)
Conjugation:	HRP
Storage:	Store at -20°C as received.
Stability:	Stable for 12 months from date of receipt.
Predicted Protein Size:	76.9 kDa
Gene Name:	cytochrome p450 oxidoreductase
Database Link:	<a href="#">NP_000932</a> <a href="#">Entrez Gene 18984 Mouse</a> <a href="#">Entrez Gene 29441 Rat</a> <a href="#">Entrez Gene 5447 Human</a> <a href="#">P16435</a>



[View online »](#)

**Background:**

This gene encodes an endoplasmic reticulum membrane oxidoreductase with an FAD-binding domain and a flavodoxin-like domain. The protein binds two cofactors, FAD and FMN, which allow it to donate electrons directly from NADPH to all microsomal P450 enzymes. Mutations in this gene have been associated with various diseases, including apparent combined P450C17 and P450C21 deficiency, amenorrhea and disordered steroidogenesis, congenital adrenal hyperplasia and Antley-Bixler syndrome. [provided by RefSeq]

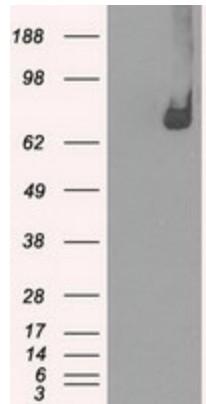
**Synonyms:**

CPR; CYPOR; P450R

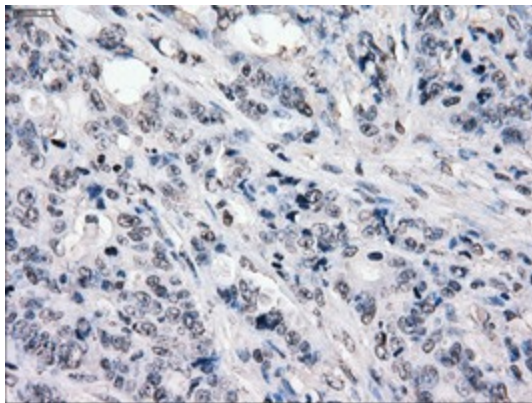
**Protein Families:**

Druggable Genome, P450, Transmembrane

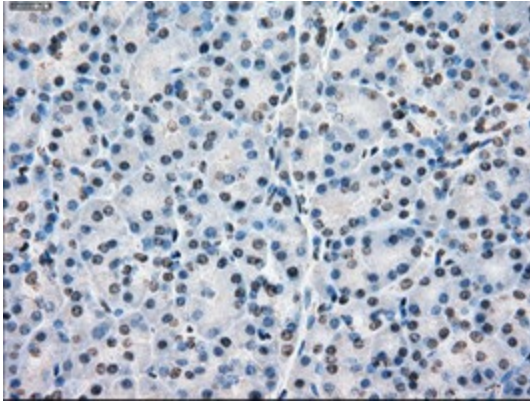
**Product images:**



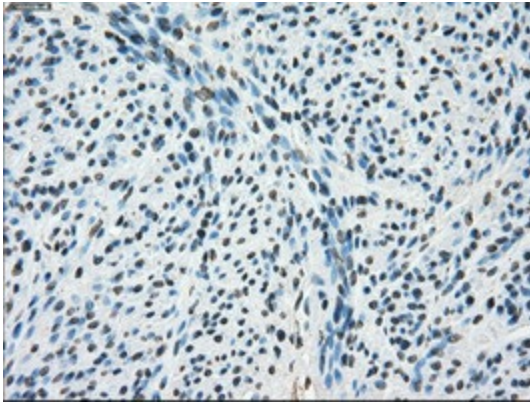
HEK293T cells were transfected with the pCMV6-ENTRY control (Left lane) or pCMV6-ENTRY POR ([RC202172], Right lane) cDNA for 48 hrs and lysed. Equivalent amounts of cell lysates (5 ug per lane) were separated by SDS-PAGE and immunoblotted with anti-POR. Positive lysates [LY424436] (100ug) and [LC424436] (20ug) can be purchased separately from OriGene.



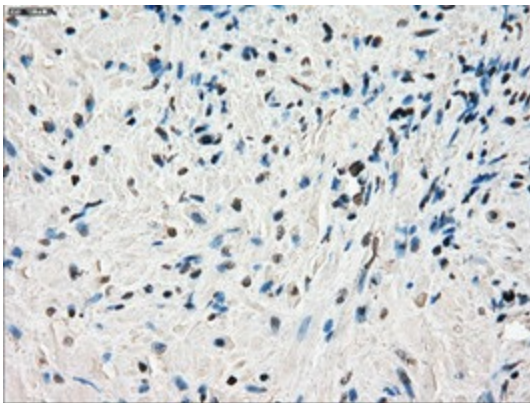
Immunohistochemical staining of paraffin-embedded Adenocarcinoma of Human colon tissue using anti-POR mouse monoclonal antibody. (Heat-induced epitope retrieval by 10mM citric buffer, pH6.0, 100°C for 10min, [TA500591])



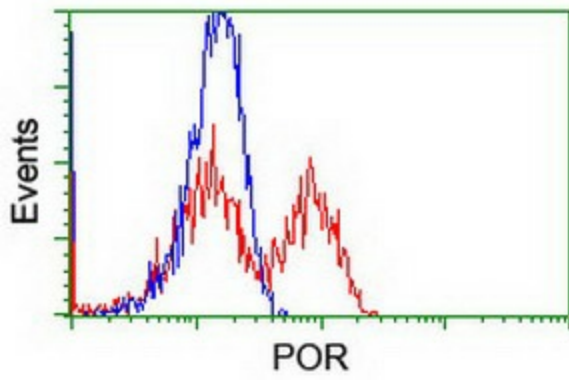
Immunohistochemical staining of paraffin-embedded Human pancreas tissue within the normal limits using anti-POR mouse monoclonal antibody. (Heat-induced epitope retrieval by 10mM citric buffer, pH6.0, 100°C for 10min, [TA500591])



Immunohistochemical staining of paraffin-embedded Human endometrium tissue within the normal limits using anti-POR mouse monoclonal antibody. (Heat-induced epitope retrieval by 10mM citric buffer, pH6.0, 100°C for 10min, [TA500591])



Immunohistochemical staining of paraffin-embedded Human prostate tissue within the normal limits using anti-POR mouse monoclonal antibody. (Heat-induced epitope retrieval by 10mM citric buffer, pH6.0, 100°C for 10min, [TA500591])



HEK293T cells transfected with either [RC202172] overexpress plasmid (Red) or empty vector control plasmid (Blue) were immunostained by anti-POR antibody ([TA500591]), and then analyzed by flow cytometry.