

Product datasheet for **TA500587BM**

KDM4C Mouse Monoclonal Antibody (HRP conjugated) [Clone ID: OTI4B1]

Product data:

Product Type:	Primary Antibodies
Clone Name:	OTI4B1
Applications:	FC, IF, IHC
Recommended Dilution:	IHC 1:50, IF 1:100, FLOW 1:100
Reactivity:	Human, Rat
Host:	Mouse
Isotype:	IgG1
Clonality:	Monoclonal
Immunogen:	Full length human recombinant protein of human KDM4C (NP_055876) produced in HEK293T cell.
Formulation:	PBS (pH 7.3) containing 1% BSA, 50% glycerol.
Concentration:	0.5 mg/ml
Purification:	Purified from mouse ascites fluids or tissue culture supernatant by affinity chromatography (protein A/G)
Conjugation:	HRP
Storage:	Store at -20°C as received.
Stability:	Stable for 12 months from date of receipt.
Predicted Protein Size:	119.8 kDa
Gene Name:	lysine demethylase 4C
Database Link:	NP_055876 Entrez Gene 23081 Human Q9H3R0



[View online »](#)

Background:

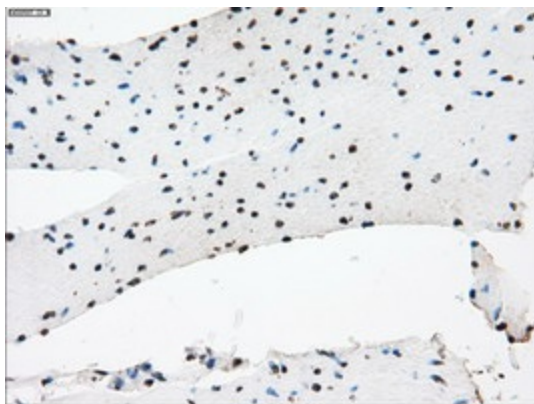
This gene is a member of the Jumonji domain 2 (JMJD2) family and encodes a protein with one JmjC domain, one JmjN domain, two PHD-type zinc fingers, and two Tudor domains. This nuclear protein functions as a trimethylation-specific demethylase, converting specific trimethylated histone residues to the dimethylated form. Chromosomal aberrations and increased transcriptional expression of this gene are associated with esophageal squamous cell carcinoma. Alternative splicing results in multiple transcript variants. [provided by RefSeq]

Synonyms:

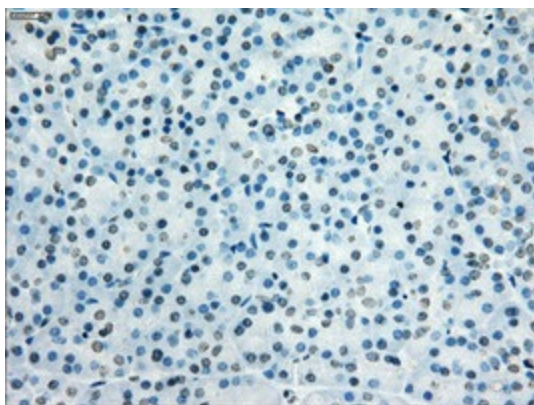
GASC1; JHDM3C; JMJD2C; TDRD14C

Protein Families:

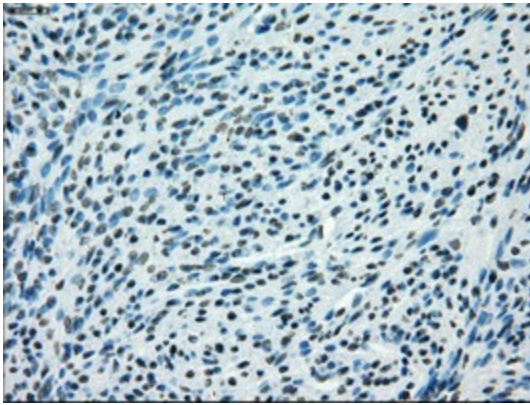
Druggable Genome, Transcription Factors

Product images:

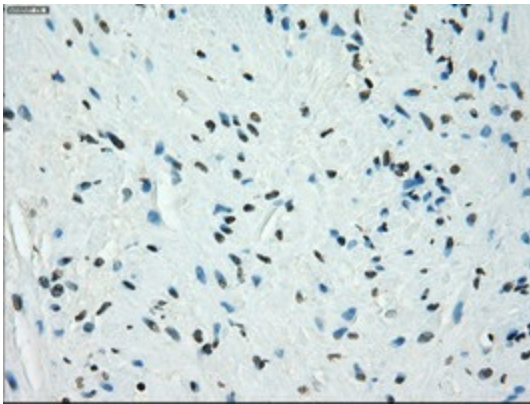
Immunohistochemical staining of paraffin-embedded Human colon tissue within the normal limits using anti-KDM4C mouse monoclonal antibody. (Heat-induced epitope retrieval by 10mM citric buffer, pH6.0, 100°C for 10min, [TA500587])



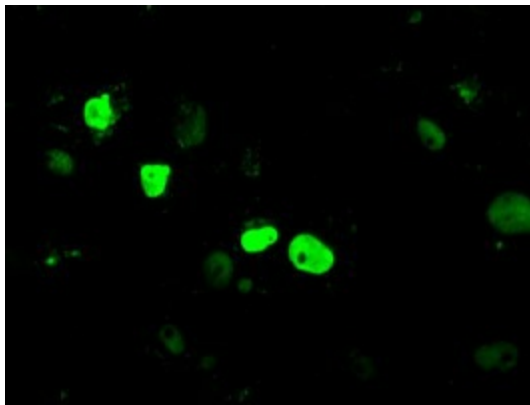
Immunohistochemical staining of paraffin-embedded Human pancreas tissue within the normal limits using anti-KDM4C mouse monoclonal antibody. (Heat-induced epitope retrieval by 10mM citric buffer, pH6.0, 100°C for 10min, [TA500587])



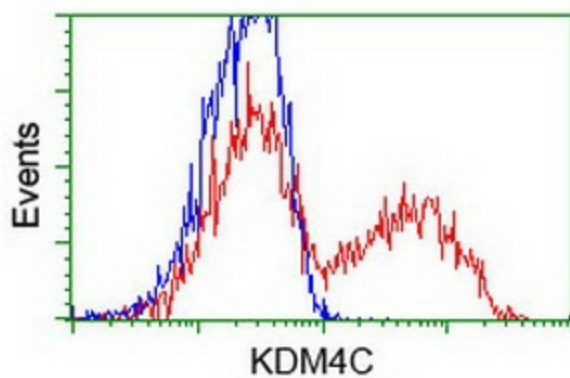
Immunohistochemical staining of paraffin-embedded Human endometrium tissue within the normal limits using anti-KDM4C mouse monoclonal antibody. (Heat-induced epitope retrieval by 10mM citric buffer, pH6.0, 100°C for 10min, [TA500587])



Immunohistochemical staining of paraffin-embedded Human prostate tissue within the normal limits using anti-KDM4C mouse monoclonal antibody. (Heat-induced epitope retrieval by 10mM citric buffer, pH6.0, 100°C for 10min, [TA500587])



Anti-KDM4C mouse monoclonal antibody ([TA500587]) immunofluorescent staining of COS7 cells transiently transfected by pCMV6-ENTRY KDM4C ([RC211182]).



HEK293T cells transfected with either [RC211182] overexpress plasmid (Red) or empty vector control plasmid (Blue) were immunostained by anti-KDM4C antibody ([TA500587]), and then analyzed by flow cytometry.