

Product datasheet for **TA500586**

BubR1 (BUB1B) Mouse Monoclonal Antibody [Clone ID: OTI15E11]

Product data:

Product Type:	Primary Antibodies
Clone Name:	OTI15E11
Applications:	IF, IHC, WB
Recommended Dilution:	WB 1:2000 IHC 1:50 IF 1:100
Reactivity:	Human
Host:	Mouse
Isotype:	IgG1
Clonality:	Monoclonal
Immunogen:	Full-length protein expressed in 293T cell transfected with human BUB1B expression vector
Formulation:	PBS (pH 7.3) containing 1% BSA, 50% glycerol and 0.02% sodium azide.
Concentration:	1 mg/ml
Purification:	Purified from mouse ascites fluids or tissue culture supernatant by affinity chromatography (protein A/G)
Conjugation:	Unconjugated
Storage:	Store at -20°C as received.
Stability:	Stable for 12 months from date of receipt.
Predicted Protein Size:	119.5 kDa
Gene Name:	BUB1 mitotic checkpoint serine/threonine kinase B
Database Link:	NP_001202 Entrez Gene 701 Human O60566
Background:	This gene encodes a kinase involved in spindle checkpoint function. The protein has been localized to the kinetochore and plays a role in the inhibition of the anaphase-promoting complex/cyclosome(APC/C), delaying the onset of anaphase and ensuring proper chromosome segregation. Impaired spindle checkpoint function has been found in many forms of cancer.
Synonyms:	Bub1A; BUB1beta; BUBR1; hBUBR1; MAD3L; MVA1; SSK1

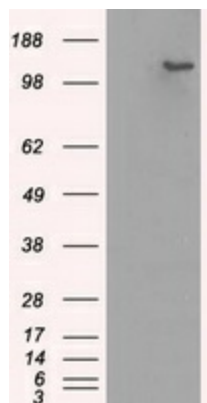


[View online »](#)

Protein Families: Druggable Genome, Protein Kinase, Stem cell - Pluripotency

Protein Pathways: Cell cycle

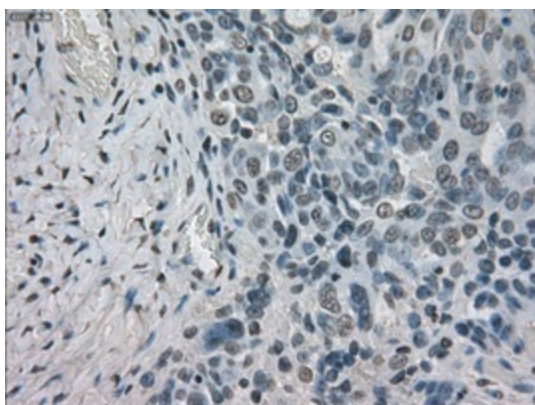
Product images:



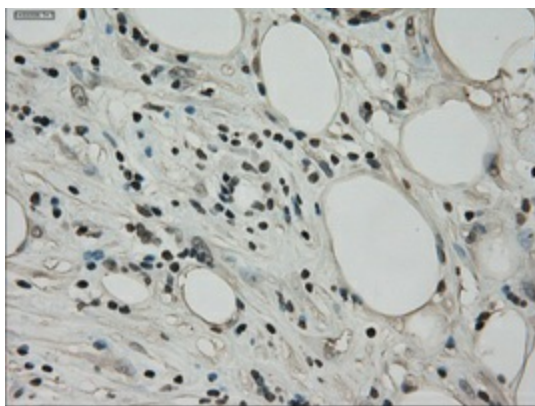
HEK293T cells were transfected with the pCMV6-ENTRY control (Left lane) or pCMV6-ENTRY BUB1B ([RC205844], Right lane) cDNA for 48 hrs and lysed. Equivalent amounts of cell lysates (5 ug per lane) were separated by SDS-PAGE and immunoblotted with anti-BUB1B. Positive lysates [LY420068] (100ug) and [LC420068] (20ug) can be purchased separately from OriGene.



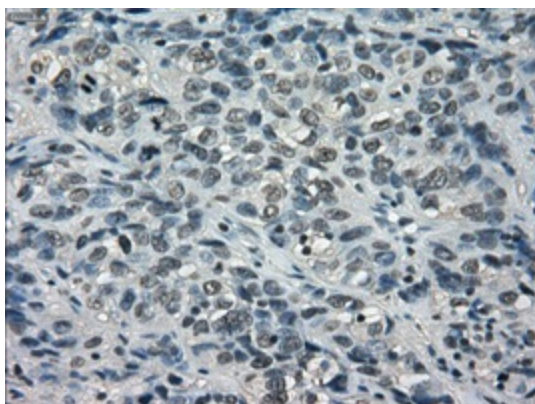
Immunohistochemical staining of paraffin-embedded Adenocarcinoma of colon tissue using anti-BUB1B mouse monoclonal antibody. (Heat-induced epitope retrieval by 10mM citric buffer, pH6.0, 100°C for 10min, TA500586, Dilution 1:50)



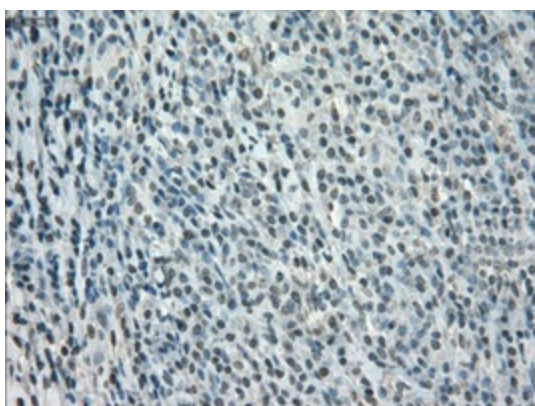
Immunohistochemical staining of paraffin-embedded Adenocarcinoma of ovary tissue using anti-BUB1B mouse monoclonal antibody. (Heat-induced epitope retrieval by 10mM citric buffer, pH6.0, 100°C for 10min, TA500586, Dilution 1:50)



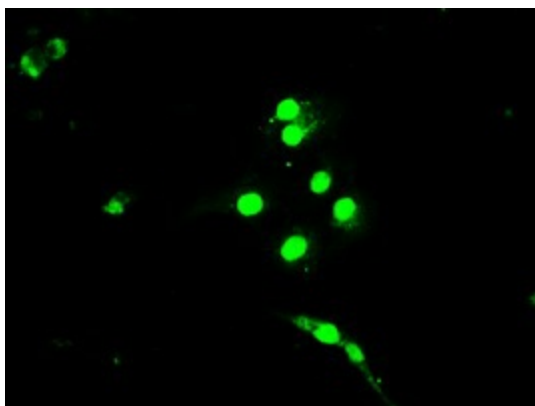
Immunohistochemical staining of paraffin-embedded Carcinoma of thyroid tissue using anti-BUB1B mouse monoclonal antibody. (Heat-induced epitope retrieval by 10mM citric buffer, pH6.0, 100°C for 10min, TA500586, Dilution 1:50)



Immunohistochemical staining of paraffin-embedded Carcinoma of bladder tissue using anti-BUB1B mouse monoclonal antibody. (Heat-induced epitope retrieval by 10mM citric buffer, pH6.0, 100°C for 10min, TA500586, Dilution 1:50)



Immunohistochemical staining of paraffin-embedded lymphoma tissue using anti-BUB1B mouse monoclonal antibody. (Heat-induced epitope retrieval by 10mM citric buffer, pH6.0, 100°C for 10min, TA500586, Dilution 1:50)



Anti-BUB1B mouse monoclonal antibody (TA500586) immunofluorescent staining of COS7 cells transiently transfected by pCMV6-ENTRY BUB1B ([RC205844]).