

## Product datasheet for TA500585M

### PP5 (PPP5C) Mouse Monoclonal Antibody [Clone ID: OTI2E12]

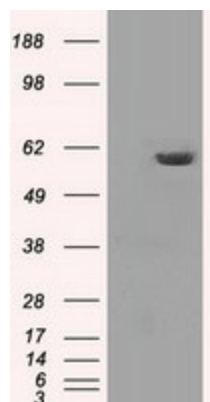
#### Product data:

Product Type:	Primary Antibodies
Clone Name:	OTI2E12
Applications:	FC, IF, IHC, WB
Recommended Dilution:	WB 1:1000~2000, IHC 1:50, IF 1:100, FLOW 1:100
Reactivity:	Human, Dog, Rat, Monkey, Mouse
Host:	Mouse
Isotype:	IgG1
Clonality:	Monoclonal
Immunogen:	Full length human recombinant protein of human PPP5C (NP_006238) produced in HEK293T cell.
Formulation:	PBS (pH 7.3) containing 1% BSA, 50% glycerol and 0.02% sodium azide.
Concentration:	1 mg/ml
Purification:	Purified from mouse ascites fluids or tissue culture supernatant by affinity chromatography (protein A/G)
Conjugation:	Unconjugated
Storage:	Store at -20°C as received.
Stability:	Stable for 12 months from date of receipt.
Predicted Protein Size:	56.9 kDa
Gene Name:	protein phosphatase 5 catalytic subunit
Database Link:	<a href="#">NP_006238</a> <a href="#">Entrez Gene 65179 Rat</a> <a href="#">Entrez Gene 612199 Dog</a> <a href="#">Entrez Gene 716214 Monkey</a> <a href="#">Entrez Gene 5536 Human</a> <a href="#">P53041</a>
Background:	May play a role in the regulation of RNA biogenesis and/or mitosis. In vitro, dephosphorylates serine residues of skeletal muscle phosphorylase and histone H1.
Synonyms:	PP5; PPP5; PPT
Protein Families:	Druggable Genome, Transcription Factors

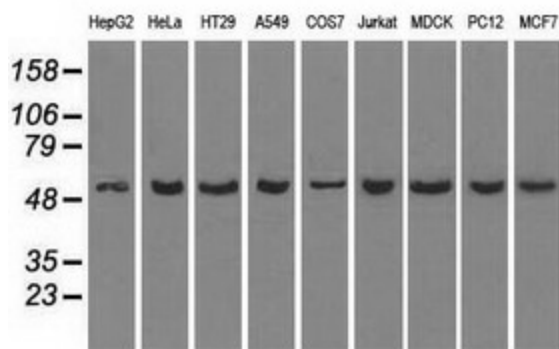

[View online »](#)

Protein Pathways: MAPK signaling pathway

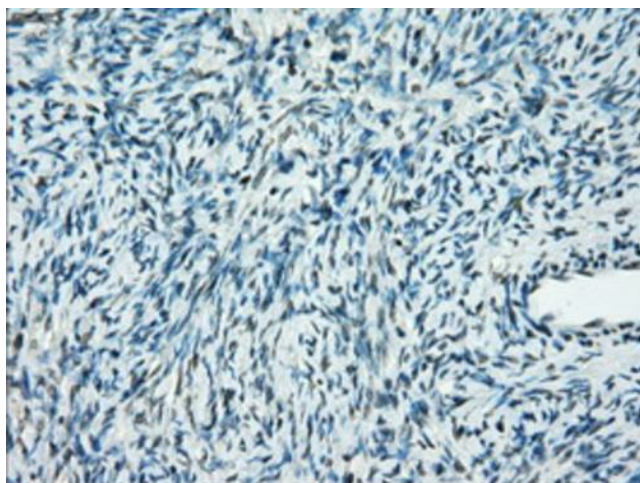
## Product images:



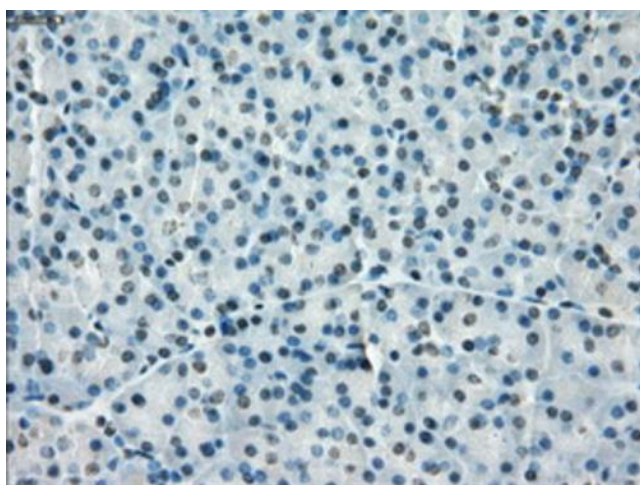
HEK293T cells were transfected with the pCMV6-ENTRY control (Left lane) or pCMV6-ENTRY PPP5C ([RC201650], Right lane) cDNA for 48 hrs and lysed. Equivalent amounts of cell lysates (5 ug per lane) were separated by SDS-PAGE and immunoblotted with anti-PPP5C. Positive lysates [LY416767] (100ug) and [LC416767] (20ug) can be purchased separately from OriGene.



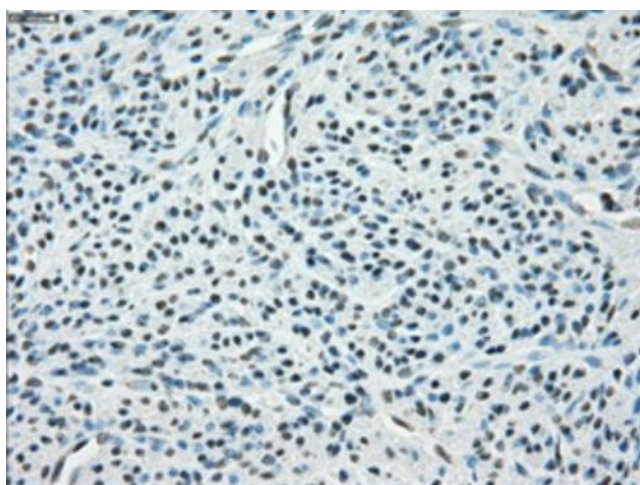
Western blot analysis of extracts (35ug) from 9 different cell lines by using anti-PPP5C monoclonal antibody.



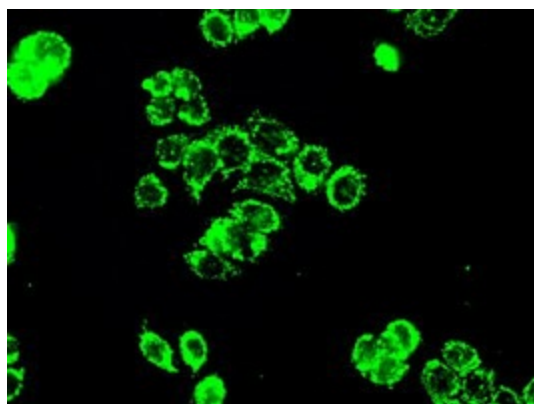
Immunohistochemical staining of paraffin-embedded Human Ovary tissue within the normal limits using anti-PPP5C mouse monoclonal antibody. Heat-induced epitope retrieval by EDTA solution buffer pH 8.0 at 120°C for 3 min.



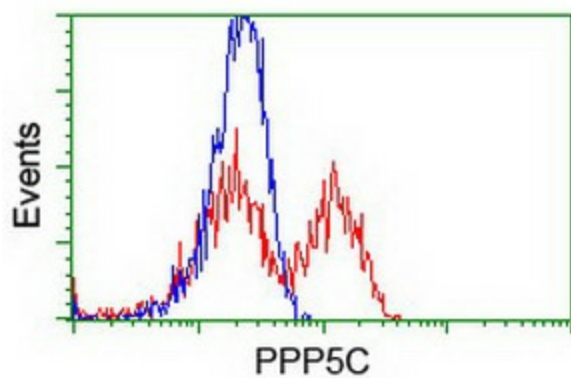
Immunohistochemical staining of paraffin-embedded Human pancreas tissue within the normal limits using anti-PPP5C mouse monoclonal antibody. Heat-induced epitope retrieval by EDTA solution buffer pH 8.0 at 120°C for 3 min.



Immunohistochemical staining of paraffin-embedded Human endometrium tissue within the normal limits using anti-PPP5C mouse monoclonal antibody. Heat-induced epitope retrieval by EDTA solution buffer pH 8.0 at 120°C for 3 min.



Immunofluorescent staining of HT29 cells using anti-PPP5C mouse monoclonal antibody ([TA500585]).



HEK293T cells transfected with either [RC201650] overexpress plasmid (Red) or empty vector control plasmid (Blue) were immunostained by anti-PPP5C antibody ([TA500585]), and then analyzed by flow cytometry.