

Product datasheet for **TA500577M**

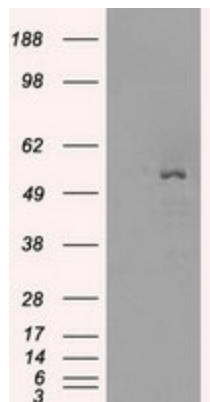
Glucose Transporter 5 GLUT5 (SLC2A5) Mouse Monoclonal Antibody [Clone ID: OTI11D11]

Product data:

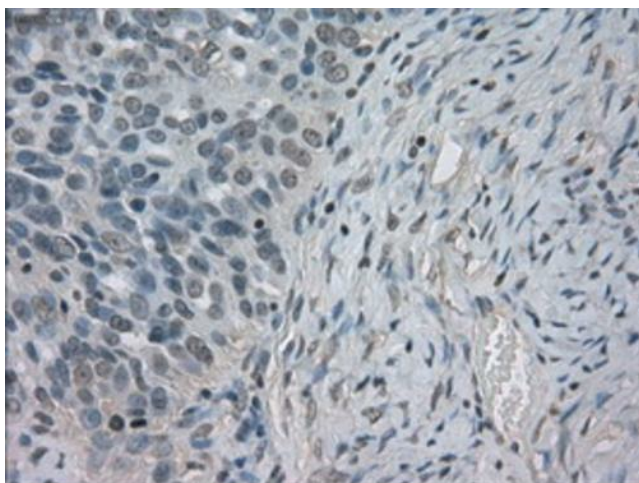
Product Type:	Primary Antibodies
Clone Name:	OTI11D11
Applications:	IHC, IP, WB
Recommended Dilution:	WB 1:2000, IHC 1:50, IP 2ug/500ul
Reactivity:	Human
Host:	Mouse
Isotype:	IgG1
Clonality:	Monoclonal
Immunogen:	Full length human recombinant protein of human SLC2A5 (NP_003030) produced in HEK293T cell.
Formulation:	PBS (pH 7.3) containing 1% BSA, 50% glycerol and 0.02% sodium azide.
Concentration:	0.5 mg/ml
Purification:	Purified from mouse ascites fluids or tissue culture supernatant by affinity chromatography (protein A/G)
Conjugation:	Unconjugated
Storage:	Store at -20°C as received.
Stability:	Stable for 12 months from date of receipt.
Predicted Protein Size:	54.8 kDa
Gene Name:	solute carrier family 2 member 5
Database Link:	NP_003030 Entrez Gene 6518 Human P22732
Synonyms:	GLUT-5; GLUT5
Protein Families:	Transmembrane


[View online »](#)

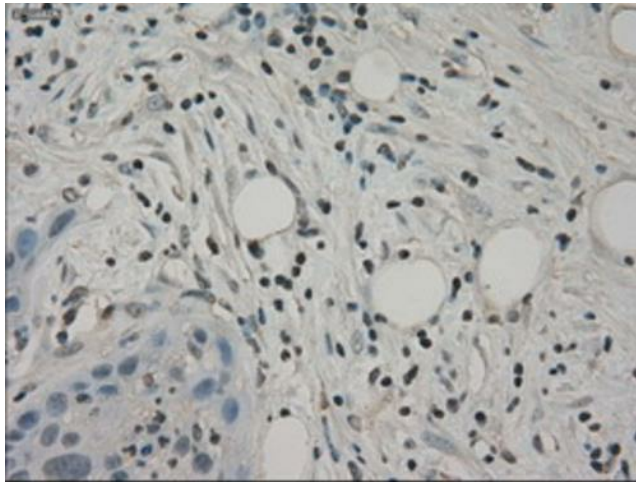
Product images:



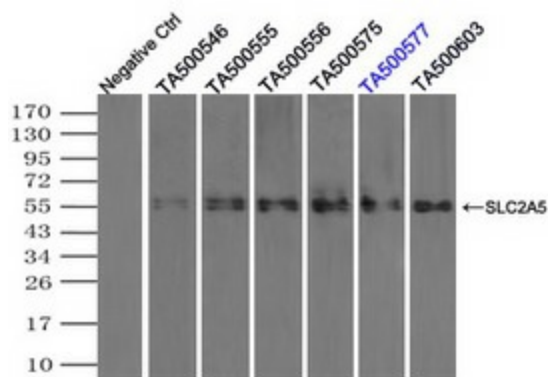
HEK293T cells were transfected with the pCMV6-ENTRY control (Left lane) or pCMV6-ENTRY SLC2A5 ([RC200418], Right lane) cDNA for 48 hrs and lysed. Equivalent amounts of cell lysates (5 ug per lane) were separated by SDS-PAGE and immunoblotted with anti-SLC2A5. Positive lysates [LY401061] (100ug) and [LC401061] (20ug) can be purchased separately from OriGene.



Immunohistochemical staining of paraffin-embedded Adenocarcinoma of Human ovary tissue using anti-SLC2A5 mouse monoclonal antibody. Heat-induced epitope retrieval by EDTA solution buffer pH 8.0 at 120°C for 3 min.



Immunohistochemical staining of paraffin-embedded Carcinoma of Human pancreas tissue using anti-SLC2A5 mouse monoclonal antibody. Heat-induced epitope retrieval by EDTA solution buffer pH 8.0 at 120°C for 3 min.



Immunoprecipitation (IP) of SLC2A5 by using TrueMab monoclonal anti-SLC2A5 antibodies (Negative control: IP without adding anti-SLC2A5 antibody.). For each experiment, 500ul of DDK tagged SLC2A5 overexpression lysates (at 1:5 dilution with HEK293T lysate), 2ug of anti-SLC2A5 antibody and 20ul (0.1mg) of goat anti-mouse conjugated magnetic beads were mixed and incubated overnight. After extensive wash to remove any non-specific binding, the immunoprecipitated products were analyzed with rabbit anti-DDK polyclonal antibody.