

Product datasheet for **TA500574**

Glucose Transporter 5 GLUT5 (SLC2A5) Mouse Monoclonal Antibody [Clone ID: OTI11E1]

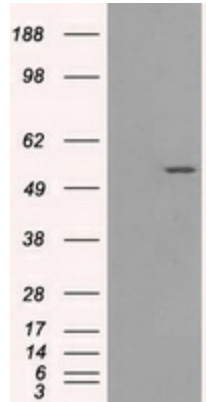
Product data:

Product Type:	Primary Antibodies
Clone Name:	OTI11E1
Applications:	IF, WB
Recommended Dilution:	WB 1:5000; IF 1:100
Reactivity:	Human
Host:	Mouse
Isotype:	IgG1
Clonality:	Monoclonal
Immunogen:	Full-length protein expressed in 293T cell transfected with human SLC2A5 expression vector
Formulation:	PBS (pH 7.3) containing 1% BSA, 50% glycerol and 0.02% sodium azide.
Concentration:	0.95 mg/ml
Purification:	Purified from mouse ascites fluids or tissue culture supernatant by affinity chromatography (protein A/G)
Conjugation:	Unconjugated
Storage:	Store at -20°C as received.
Stability:	Stable for 12 months from date of receipt.
Predicted Protein Size:	55 kDa
Gene Name:	solute carrier family 2 member 5
Database Link:	NP_003030 Entrez Gene 6518 Human P22732
Background:	Cytochalasin B-sensitive carrier. Seems to function primarily as a fructose transporter.
Synonyms:	GLUT-5; GLUT5
Protein Families:	Transmembrane

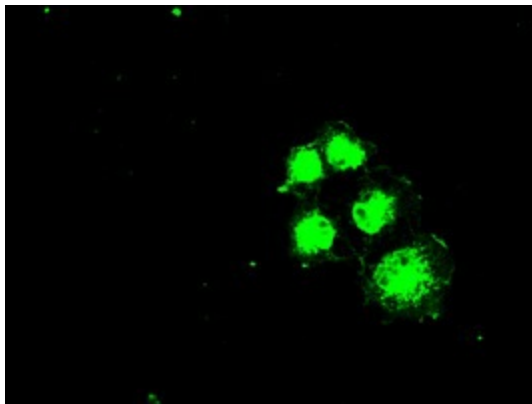


[View online »](#)

Product images:



HEK293T cells were transfected with the pCMV6-ENTRY control (Left lane) or pCMV6-ENTRY SLC2A5 ([RC200418], Right lane) cDNA for 48 hrs and lysed. Equivalent amounts of cell lysates (5 ug per lane) were separated by SDS-PAGE and immunoblotted with anti-SLC2A5. Positive lysates [LY401061] (100ug) and [LC401061] (20ug) can be purchased separately from OriGene.



Anti-SLC2A5 mouse monoclonal antibody (TA500574) immunofluorescent staining of COS7 cells transiently transfected by pCMV6-ENTRY SLC2A5 ([RC200418]).