

Product datasheet for **TA500571BM**

PP5 (PPP5C) Mouse Monoclonal Antibody (HRP conjugated) [Clone ID: OTI4E1]

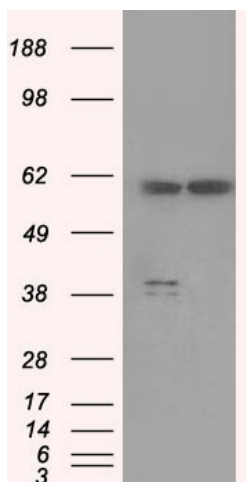
Product data:

Product Type:	Primary Antibodies
Clone Name:	OTI4E1
Applications:	IHC, WB
Recommended Dilution:	WB 1:500, IHC 1:50
Reactivity:	Human, Mouse, Rat
Host:	Mouse
Isotype:	IgG1
Clonality:	Monoclonal
Immunogen:	Full length human recombinant protein of human PPP5C (NP_006238) produced in HEK293T cell.
Formulation:	PBS (pH 7.3) containing 1% BSA, 50% glycerol.
Concentration:	0.5 mg/ml
Purification:	Purified from mouse ascites fluids or tissue culture supernatant by affinity chromatography (protein A/G)
Conjugation:	HRP
Storage:	Store at -20°C as received.
Stability:	Stable for 12 months from date of receipt.
Predicted Protein Size:	56.7 kDa
Gene Name:	protein phosphatase 5 catalytic subunit
Database Link:	NP_006238 Entrez Gene 65179 Rat Entrez Gene 5536 Human P53041
Background:	May play a role in the regulation of RNA biogenesis and/or mitosis. In vitro, dephosphorylates serine residues of skeletal muscle phosphorylase and histone H1
Synonyms:	PP5; PPP5; PPT
Protein Families:	Druggable Genome, Transcription Factors
Protein Pathways:	MAPK signaling pathway



[View online »](#)

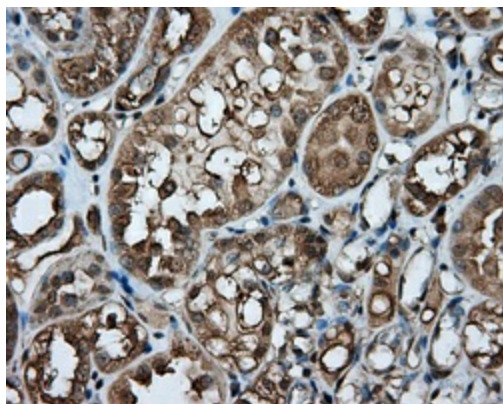
Product images:



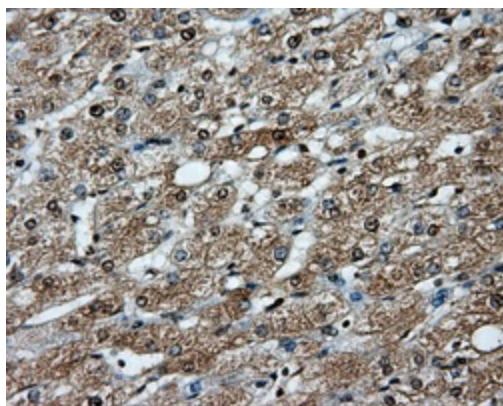
HEK293T cells were transfected with the pCMV6-ENTRY control (Left lane) or pCMV6-ENTRY PPP5C ([RC201650], Right lane) cDNA for 48 hrs and lysed. Equivalent amounts of cell lysates (5 ug per lane) were separated by SDS-PAGE and immunoblotted with anti-PPP5C. Positive lysates [LY416767] (100ug) and [LC416767] (20ug) can be purchased separately from OriGene.



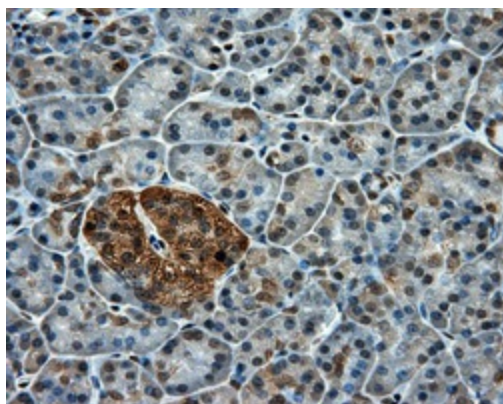
Immunohistochemical staining of paraffin-embedded colon tissue within the normal limits using anti-PPP5C mouse monoclonal antibody. (Heat-induced epitope retrieval by 10mM citric buffer, pH6.0, 100°C for 10min, [TA500571], Dilution 1:50)



Immunohistochemical staining of paraffin-embedded Kidney tissue within the normal limits using anti-PPP5C mouse monoclonal antibody. (Heat-induced epitope retrieval by 10mM citric buffer, pH6.0, 100°C for 10min, [TA500571], Dilution 1:50)



Immunohistochemical staining of paraffin-embedded liver tissue within the normal limits using anti-PPP5C mouse monoclonal antibody. (Heat-induced epitope retrieval by 10mM citric buffer, pH6.0, 100°C for 10min, [TA500571], Dilution 1:50)



Immunohistochemical staining of paraffin-embedded pancreas tissue within the normal limits using anti-PPP5C mouse monoclonal antibody. (Heat-induced epitope retrieval by 10mM citric buffer, pH6.0, 100°C for 10min, [TA500571], Dilution 1:50)