

Product datasheet for **TA500567BM**

KDM4C Mouse Monoclonal Antibody (HRP conjugated) [Clone ID: OTI5B9]

Product data:

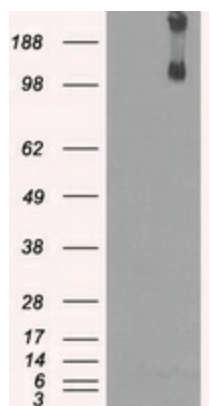
Product Type:	Primary Antibodies
Clone Name:	OTI5B9
Applications:	IF, IHC, WB
Recommended Dilution:	WB 1:2000, IHC 1:50, IF 1:100
Reactivity:	Human, Rat
Host:	Mouse
Isotype:	IgG1
Clonality:	Monoclonal
Immunogen:	Full-length protein expressed in 293T cell transfected with human KDM4C expression vector
Formulation:	PBS (pH 7.3) containing 1% BSA, 50% glycerol.
Concentration:	0.5 mg/ml
Purification:	Purified from mouse ascites fluids or tissue culture supernatant by affinity chromatography (protein A/G)
Conjugation:	HRP
Storage:	Store at -20°C as received.
Stability:	Stable for 12 months from date of receipt.
Predicted Protein Size:	120.0 kDa
Gene Name:	lysine demethylase 4C
Database Link:	NP_055876 Entrez Gene 23081 Human Q9H3R0
Background:	This gene is a member of the Jumonji domain 2 (JMJD2) family and encodes a protein with one JmjC domain, one JmjN domain, two PHD-type zinc fingers, and two Tudor domains. This nuclear protein functions as a trimethylation-specific demethylase, converting specific trimethylated histone residues to the dimethylated form. Chromosomal aberrations and increased transcriptional expression of this gene are associated with esophageal squamous cell carcinoma. Alternative splicing results in multiple transcript variants.



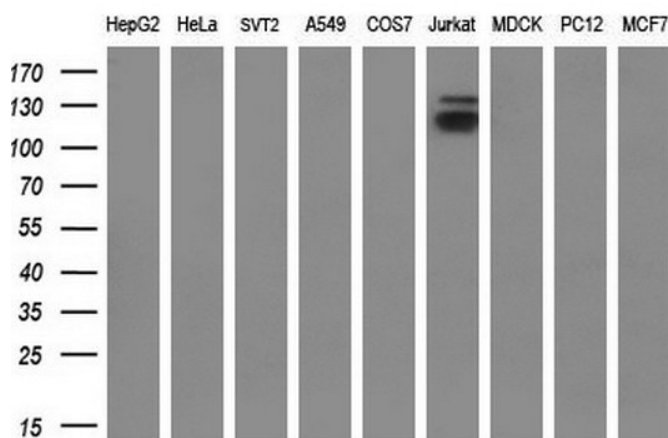
[View online »](#)

Synonyms: GASC1; JHDM3C; JMJD2C; TDRD14C
Protein Families: Druggable Genome, Transcription Factors

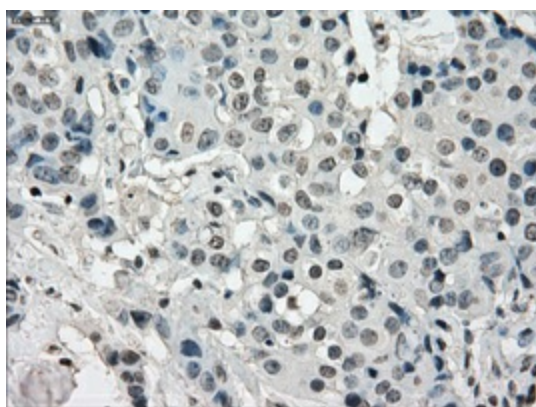
Product images:



HEK293T cells were transfected with the pCMV6-ENTRY control (Cat# [PS100001], Left lane) or pCMV6-ENTRY KDM4C (Cat# [RC211182], Right lane) cDNA for 48 hrs and lysed. Equivalent amounts of cell lysates (5 ug per lane) were separated by SDS-PAGE and immunoblotted with anti-KDM4C(Cat# [TA500567]). Positive lysates [LY402405] (100ug) and [LC402405] (20ug) can be purchased separately from OriGene.



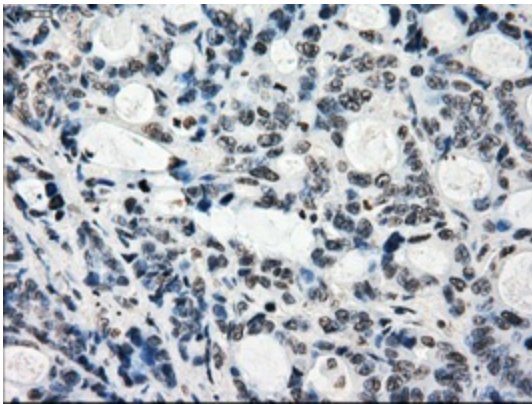
Western blot analysis of extracts (35ug) from 9 different cell lines by using anti-KDM4C monoclonal antibody at 1:200 dilution. (HepG2: human; HeLa: human; SVT2: mouse; A549: human; COS7: monkey; Jurkat: human; MDCK: canine; PC12: rat; MCF7: human)



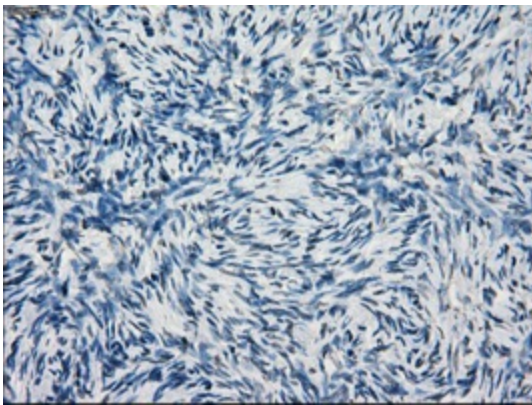
Immunohistochemical staining of paraffin-embedded Adenocarcinoma of breast tissue using anti-KDM4C mouse monoclonal antibody. (Heat-induced epitope retrieval by 10mM citric buffer, pH6.0, 100°C for 10min, [TA500567], Dilution 1:50)



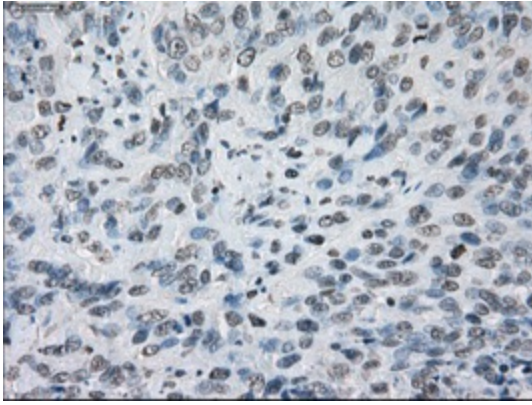
Immunohistochemical staining of paraffin-embedded colon tissue within the normal limits using anti-KDM4C mouse monoclonal antibody. (Heat-induced epitope retrieval by 10mM citric buffer, pH6.0, 100°C for 10min, [TA500567], Dilution 1:50)



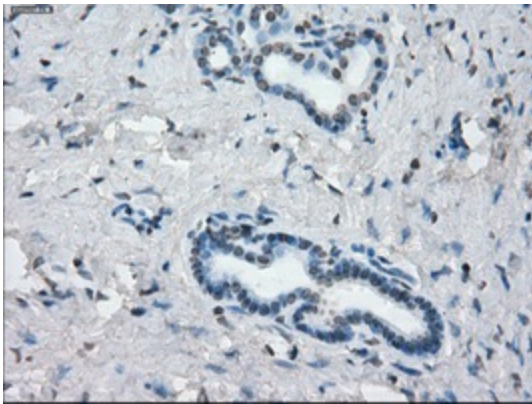
Immunohistochemical staining of paraffin-embedded Adenocarcinoma of colon tissue using anti-KDM4C mouse monoclonal antibody. (Heat-induced epitope retrieval by 10mM citric buffer, pH6.0, 100°C for 10min, [TA500567], Dilution 1:50)



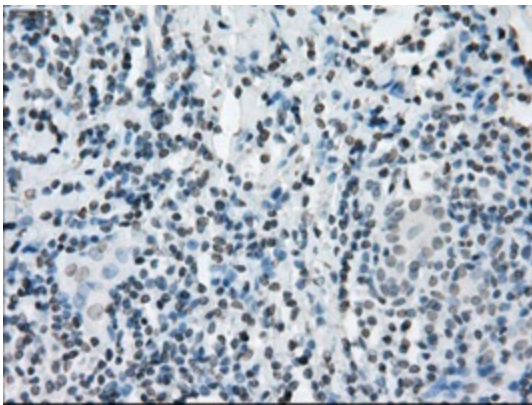
Immunohistochemical staining of paraffin-embedded Ovary tissue within the normal limits using anti-KDM4C mouse monoclonal antibody. (Heat-induced epitope retrieval by 10mM citric buffer, pH6.0, 100°C for 10min, [TA500567], Dilution 1:50)



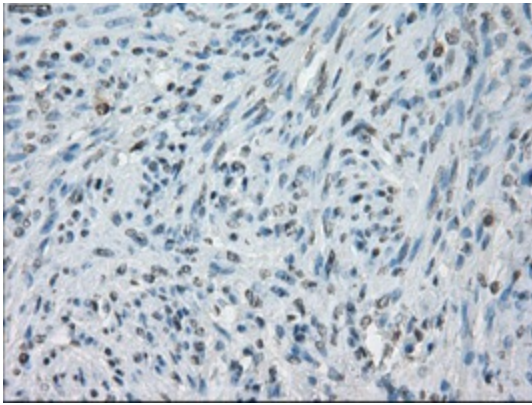
Immunohistochemical staining of paraffin-embedded Adenocarcinoma of ovary tissue using anti-KDM4C mouse monoclonal antibody. (Heat-induced epitope retrieval by 10mM citric buffer, pH6.0, 100°C for 10min, [TA500567], Dilution 1:50)



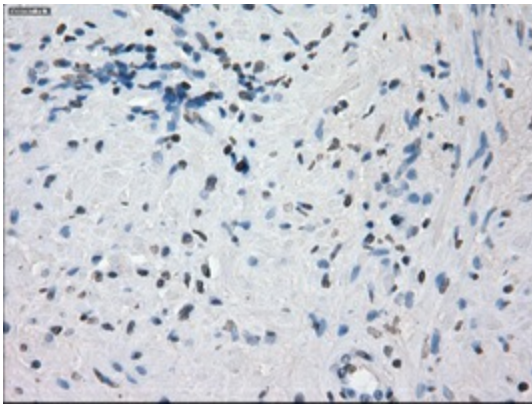
Immunohistochemical staining of paraffin-embedded pancreas tissue within the normal limits using anti-KDM4C mouse monoclonal antibody. (Heat-induced epitope retrieval by 10mM citric buffer, pH6.0, 100°C for 10min, [TA500567], Dilution 1:50)



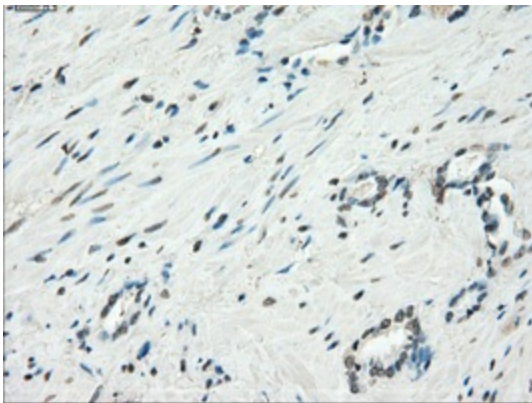
Immunohistochemical staining of paraffin-embedded Carcinoma of thyroid tissue using anti-KDM4C mouse monoclonal antibody. (Heat-induced epitope retrieval by 10mM citric buffer, pH6.0, 100°C for 10min, [TA500567], Dilution 1:50)



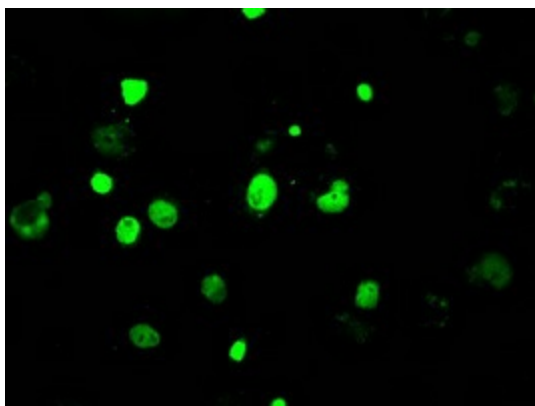
Immunohistochemical staining of paraffin-embedded endometrium tissue within the normal limits using anti-KDM4C mouse monoclonal antibody. (Heat-induced epitope retrieval by 10mM citric buffer, pH6.0, 100°C for 10min, [TA500567], Dilution 1:50)



Immunohistochemical staining of paraffin-embedded prostate tissue within the normal limits using anti-KDM4C mouse monoclonal antibody. (Heat-induced epitope retrieval by 10mM citric buffer, pH6.0, 100°C for 10min, [TA500567], Dilution 1:50)



Immunohistochemical staining of paraffin-embedded Carcinoma of prostate tissue using anti-KDM4C mouse monoclonal antibody. (Heat-induced epitope retrieval by 10mM citric buffer, pH6.0, 100°C for 10min, [TA500567], Dilution 1:50)



Anti-KDM4C mouse monoclonal antibody ([TA500567]) immunofluorescent staining of COS7 cells transiently transfected by pCMV6-ENTRY KDM4C ([RC211182]).