

Product datasheet for **TA500563AM**

Protein kinase Y linked (PRKY) Mouse Monoclonal Antibody (Biotin conjugated) [Clone ID: OTI3D11]

Product data:

Product Type:	Primary Antibodies
Clone Name:	OTI3D11
Applications:	FC, IF
Recommended Dilution:	IF 1:100, Flow 1:100
Reactivity:	Human
Host:	Mouse
Isotype:	IgG1
Clonality:	Monoclonal
Immunogen:	Full length human recombinant protein of human PRKY (NP_002751) produced in HEK293T cell.
Formulation:	PBS (pH 7.3) containing 1% BSA, 50% glycerol and 0.02% sodium azide.
Concentration:	0.5 mg/ml
Purification:	Purified from mouse ascites fluids or tissue culture supernatant by affinity chromatography (protein A/G)
Conjugation:	Biotin
Storage:	Store at -20°C as received.
Stability:	Stable for 12 months from date of receipt.
Predicted Protein Size:	31.7 kDa
Gene Name:	protein kinase Y-linked (pseudogene)
Database Link:	NP_002751 Entrez Gene 5616 Human O43930
Background:	This gene is similar to the protein kinase, X-linked gene in the pseudoautosomal region of the X chromosome. The gene is classified as a transcribed pseudogene because it has lost a coding exon that results in all transcripts being candidates for nonsense-mediated decay (NMD) and unlikely to express a protein. Abnormal recombination between this gene and a related gene on chromosome X is a frequent cause of XX males and XY females.

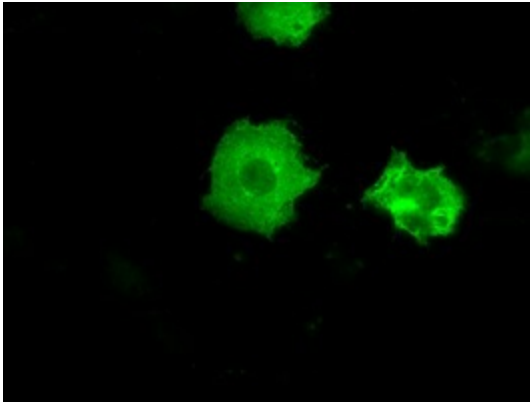


[View online »](#)

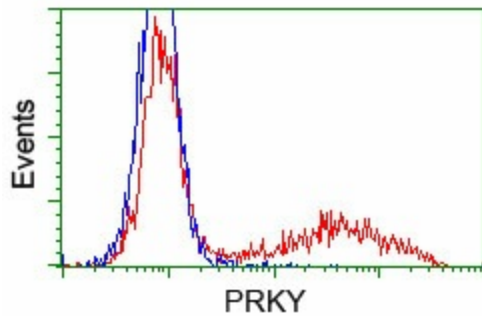
Synonyms: OTTHUMP00000033227; protein kinase, Y-linked

Protein Families: Druggable Genome, Protein Kinase

Product images:



Anti-PRKY mouse monoclonal antibody ([TA500563]) immunofluorescent staining of COS7 cells transiently transfected by pCMV6-ENTRY PRKY ([RC210438]).



HEK293T cells transfected with either pCMV6-ENTRY PRKY ([RC210438]) (Red) or empty vector control plasmid (Blue) were immunostained with anti-PRKY mouse monoclonal ([TA500563], Dilution 1:1,000), and then analyzed by flow cytometry.