

## Product datasheet for **TA500557S**

### **FKBP12 (FKBP1A) Mouse Monoclonal Antibody [Clone ID: OTI3B3]**

#### **Product data:**

Product Type:	Primary Antibodies
Clone Name:	OTI3B3
Applications:	FC, IHC, WB
Recommended Dilution:	WB: 1:200 - 1:1000, IHC 1:150, FLOW 1:100
Reactivity:	Human, Mouse, Rat
Host:	Mouse
Isotype:	IgG2b
Clonality:	Monoclonal
Immunogen:	Full length human recombinant protein of human FKBP1A (NP_000792) produced in HEK293T cell.
Formulation:	PBS (pH 7.3) containing 1% BSA, 50% glycerol and 0.02% sodium azide.
Concentration:	Lot dependent
Purification:	Purified from mouse ascites fluids or tissue culture supernatant by affinity chromatography (protein A/G)
Conjugation:	Unconjugated
Storage:	Store at -20°C as received.
Stability:	Stable for 12 months from date of receipt.
Predicted Protein Size:	11.8 kDa
Gene Name:	FKBP prolyl isomerase 1A
Database Link:	<a href="#">NP_000792</a> <a href="#">Entrez Gene 14225 Mouse</a> <a href="#">Entrez Gene 25639 Rat</a> <a href="#">Entrez Gene 2280 Human</a> <a href="#">P62942</a>



[View online »](#)

**Background:**

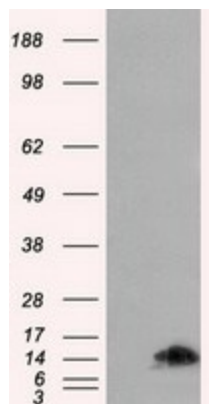
The protein encoded by this gene is a member of the immunophilin protein family, which play a role in immunoregulation and basic cellular processes involving protein folding and trafficking. The protein is a cis-trans prolyl isomerase that binds the immunosuppressants FK506 and rapamycin. It interacts with several intracellular signal transduction proteins including type I TGF-beta receptor. It also interacts with multiple intracellular calcium release channels, and coordinates multi-protein complex formation of the tetrameric skeletal muscle ryanodine receptor. In mouse, deletion of this homologous gene causes congenital heart disorder known as noncompaction of left ventricular myocardium. Multiple alternatively spliced variants, encoding the same protein, have been identified. The human genome contains five pseudogenes related to this gene, at least one of which is transcribed. [provided by RefSeq]

**Synonyms:**

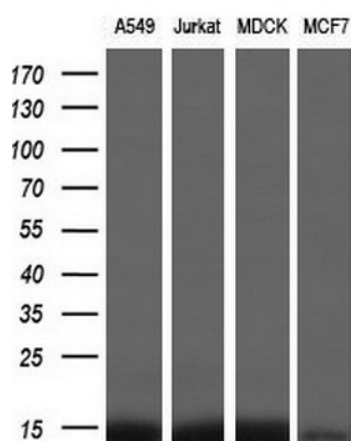
FKBP-1A; FKBP-12; FKBP1; FKBP12; PKC12; PKC12; PPIASE

**Protein Families:**

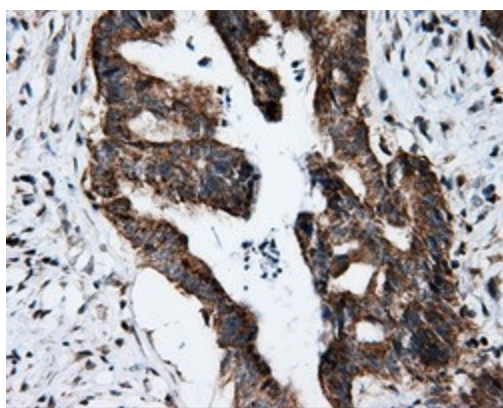
Druggable Genome

**Product images:**


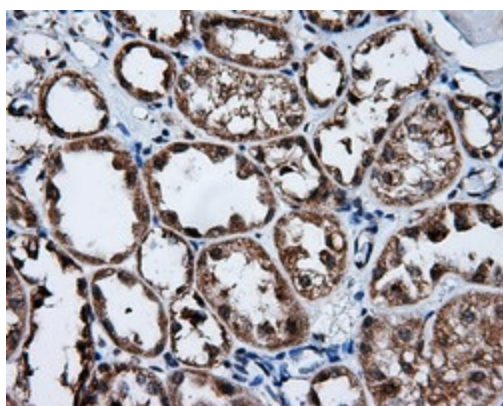
HEK293T cells were transfected with the pCMV6-ENTRY control (Cat# [PS100001], Left lane) or pCMV6-ENTRY FKBP1A (Cat# [RC201237], Right lane) cDNA for 48 hrs and lysed. Equivalent amounts of cell lysates (5 ug per lane) were separated by SDS-PAGE and immunoblotted with anti-FKBP1A (Cat# [TA500557]). Positive lysates [LY400279] (100ug) and [LC400279] (20ug) can be purchased separately from OriGene.



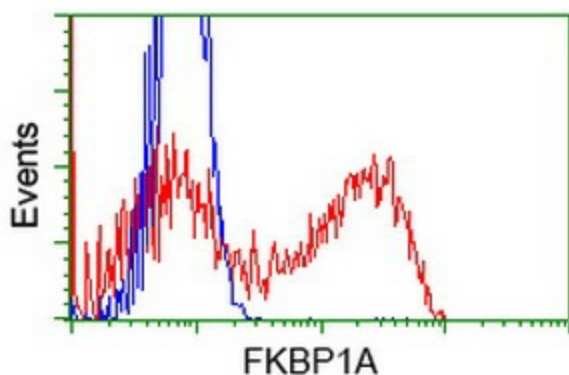
Western blot analysis of extracts (10ug) from 4 different cell lines by using anti-FKBP1A monoclonal antibody (1:200).



Immunohistochemical staining of paraffin-embedded Adenocarcinoma of Human colon tissue using anti-FKBP1A mouse monoclonal antibody. (Heat-induced epitope retrieval by 10mM citric buffer, pH6.0, 100°C for 10min, [TA500557])



Immunohistochemical staining of paraffin-embedded Human Kidney tissue within the normal limits using anti-FKBP1A mouse monoclonal antibody. (Heat-induced epitope retrieval by 10mM citric buffer, pH6.0, 100°C for 10min, [TA500557])



HEK293T cells transfected with either [RC201237] overexpress plasmid (Red) or empty vector control plasmid (Blue) were immunostained by anti-FKBP1A antibody ([TA500557]), and then analyzed by flow cytometry.