

Product datasheet for **TA500556**

Glucose Transporter 5 GLUT5 (SLC2A5) Mouse Monoclonal Antibody [Clone ID: OTI9F3]

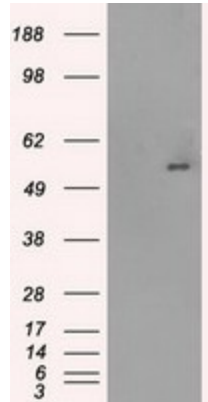
Product data:

Product Type:	Primary Antibodies
Clone Name:	OTI9F3
Applications:	FC, IHC, IP, WB
Recommended Dilution:	WB 1:500~1000, IHC 1:50, FLOW 1:100, IP 2ug/500ul
Reactivity:	Human, Monkey
Host:	Mouse
Isotype:	IgG1
Clonality:	Monoclonal
Immunogen:	Full length human recombinant protein of human SLC2A5 (NP_003030) produced in HEK293T cell.
Formulation:	PBS (pH 7.3) containing 1% BSA, 50% glycerol and 0.02% sodium azide.
Concentration:	1 mg/ml
Purification:	Purified from mouse ascites fluids or tissue culture supernatant by affinity chromatography (protein A/G)
Conjugation:	Unconjugated
Storage:	Store at -20°C as received.
Stability:	Stable for 12 months from date of receipt.
Predicted Protein Size:	54.8 kDa
Gene Name:	solute carrier family 2 member 5
Database Link:	NP_003030 Entrez Gene 722154 Monkey Entrez Gene 6518 Human P22732
Synonyms:	GLUT-5; GLUT5
Protein Families:	Transmembrane

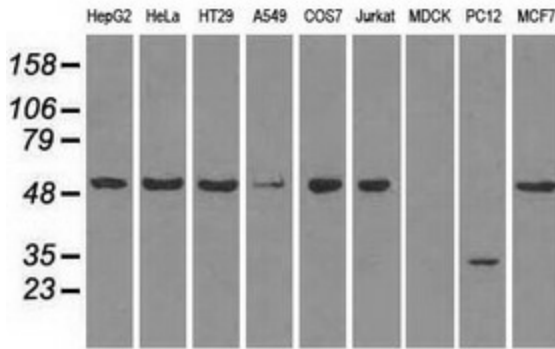


[View online »](#)

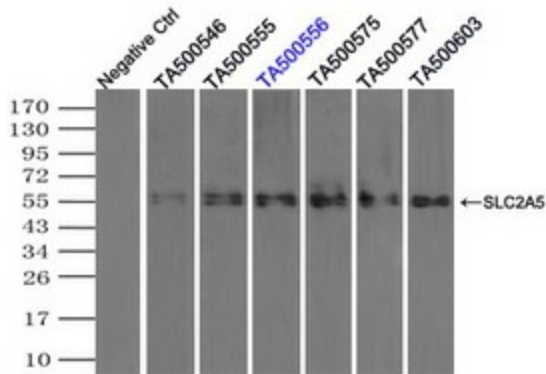
Product images:



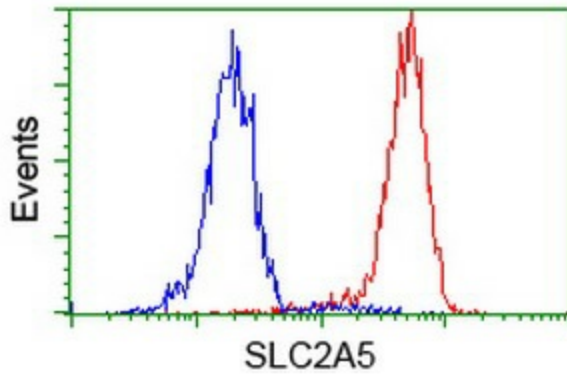
HEK293T cells were transfected with the pCMV6-ENTRY control (Cat# [PS100001], Left lane) or pCMV6-ENTRY SLC2A5 (Cat# [RC200418], Right lane) cDNA for 48 hrs and lysed. Equivalent amounts of cell lysates (5 ug per lane) were separated by SDS-PAGE and immunoblotted with anti-SLC2A5(Cat# TA500556). Positive lysates [LY401061] (100ug) and [LC401061] (20ug) can be purchased separately from OriGene.



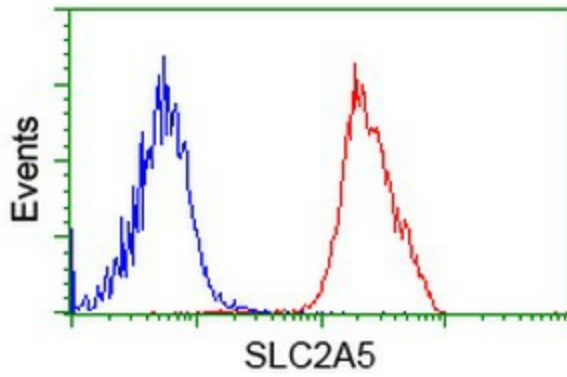
Western blot analysis of extracts (35ug) from 9 different cell lines by using anti-SLC2A5 monoclonal antibody (HepG2: human; HeLa: human; SVT2: mouse; A549: human; COS7: monkey; Jurkat: human; MDCK: canine; PC12: rat; MCF7: human).



Immunoprecipitation (IP) of SLC2A5 by using TrueMab monoclonal anti-SLC2A5 antibodies (Negative control: IP without adding anti-SLC2A5 antibody.). For each experiment, 500ul of DDK tagged SLC2A5 overexpression lysates (at 1:5 dilution with HEK293T lysate), 2ug of anti-SLC2A5 antibody and 20ul (0.1mg) of goat anti-mouse conjugated magnetic beads were mixed and incubated overnight. After extensive wash to remove any non-specific binding, the immunoprecipitated products were analyzed with rabbit anti-DDK polyclonal antibody.



Flow cytometric Analysis of HeLa cells, using anti-SLC2A5 antibody (TA500556), (Red), compared to a nonspecific negative control antibody, (Blue).



Flow cytometric Analysis of Jurkat cells, using anti-SLC2A5 antibody (TA500556), (Red), compared to a nonspecific negative control antibody, (Blue).