

## Product datasheet for **TA500555M**

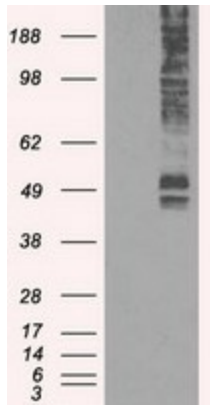
### Glucose Transporter 5 GLUT5 (SLC2A5) Mouse Monoclonal Antibody [Clone ID: OTI9H4]

#### Product data:

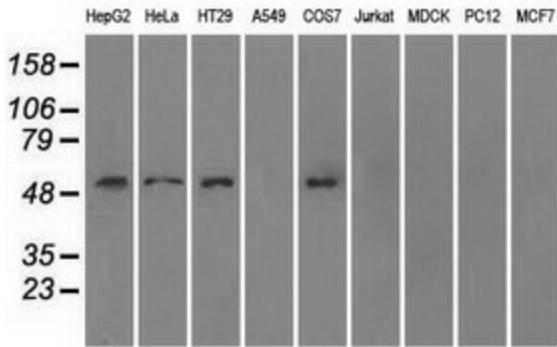
|                         |                                                                                                                                         |
|-------------------------|-----------------------------------------------------------------------------------------------------------------------------------------|
| Product Type:           | Primary Antibodies                                                                                                                      |
| Clone Name:             | OTI9H4                                                                                                                                  |
| Applications:           | IP, WB                                                                                                                                  |
| Recommended Dilution:   | WB 1:2500~5000, IP 2ug/500ul                                                                                                            |
| Reactivity:             | Human, Monkey                                                                                                                           |
| Host:                   | Mouse                                                                                                                                   |
| Isotype:                | IgG1                                                                                                                                    |
| Clonality:              | Monoclonal                                                                                                                              |
| Immunogen:              | Full length human recombinant protein of human SLC2A5 (NP_003030) produced in HEK293T cell.                                             |
| Formulation:            | PBS (pH 7.3) containing 1% BSA, 50% glycerol and 0.02% sodium azide.                                                                    |
| Concentration:          | 1 mg/ml                                                                                                                                 |
| Purification:           | Purified from mouse ascites fluids or tissue culture supernatant by affinity chromatography (protein A/G)                               |
| Conjugation:            | Unconjugated                                                                                                                            |
| Storage:                | Store at -20°C as received.                                                                                                             |
| Stability:              | Stable for 12 months from date of receipt.                                                                                              |
| Predicted Protein Size: | 54.8 kDa                                                                                                                                |
| Gene Name:              | solute carrier family 2 member 5                                                                                                        |
| Database Link:          | <a href="#">NP_003030</a><br><a href="#">Entrez Gene 722154 Monkey</a> <a href="#">Entrez Gene 6518 Human</a><br><a href="#">P22732</a> |
| Synonyms:               | GLUT-5; GLUT5                                                                                                                           |
| Protein Families:       | Transmembrane                                                                                                                           |


[View online »](#)

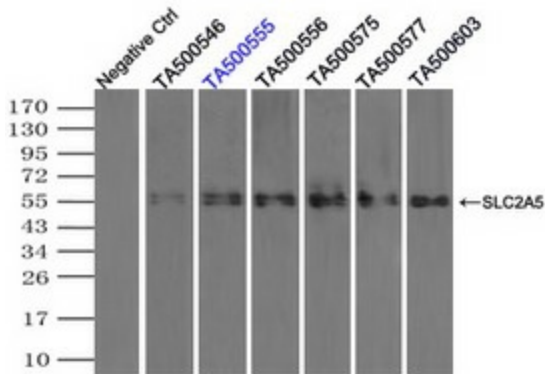
**Product images:**



HEK293T cells were transfected with the pCMV6-ENTRY control (Left lane) or pCMV6-ENTRY SLC2A5 ([RC200418], Right lane) cDNA for 48 hrs and lysed. Equivalent amounts of cell lysates (5 ug per lane) were separated by SDS-PAGE and immunoblotted with anti-SLC2A5. Positive lysates [LY401061] (100ug) and [LC401061] (20ug) can be purchased separately from OriGene.



Western blot analysis of extracts (35ug) from 9 different cell lines by using anti-SLC2A5 monoclonal antibody (HepG2: human; HeLa: human; SVT2: mouse; A549: human; COS7: monkey; Jurkat: human; MDCK: canine; PC12: rat; MCF7: human).



Immunoprecipitation (IP) of SLC2A5 by using TrueMab monoclonal anti-SLC2A5 antibodies (Negative control: IP without adding anti-SLC2A5 antibody.). For each experiment, 500ul of DDK tagged SLC2A5 overexpression lysates (at 1:5 dilution with HEK293T lysate), 2ug of anti-SLC2A5 antibody and 20ul (0.1mg) of goat anti-mouse conjugated magnetic beads were mixed and incubated overnight. After extensive wash to remove any non-specific binding, the immunoprecipitated products were analyzed with rabbit anti-DDK polyclonal antibody.