

Product datasheet for **TA500554AM**

Aurora C (AURKC) Mouse Monoclonal Antibody (Biotin conjugated) [Clone ID: OTI10A7]

Product data:

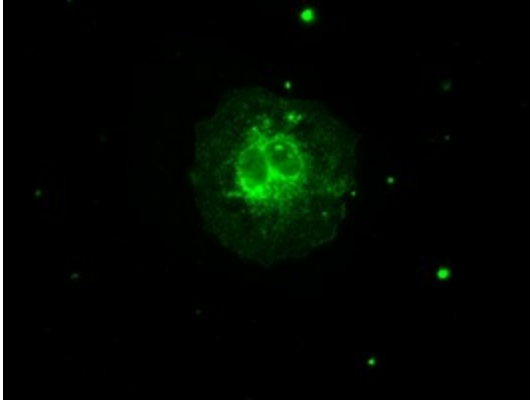
Product Type:	Primary Antibodies
Clone Name:	OTI10A7
Applications:	IF, WB
Recommended Dilution:	WB 1:500, IF 1:100
Reactivity:	Human
Host:	Mouse
Isotype:	IgG1
Clonality:	Monoclonal
Immunogen:	Full-length protein expressed in 293T cell transfected with human AURKC expression vector
Concentration:	0.5 mg/ml
Purification:	Purified from mouse ascites fluids or tissue culture supernatant by affinity chromatography (protein A/G)
Conjugation:	Biotin
Storage:	Store at -20°C as received.
Stability:	Stable for 12 months from date of receipt.
Predicted Protein Size:	35.6 kDa
Gene Name:	aurora kinase C
Database Link:	NP_001015878 Entrez Gene 6795 Human Q9UQB9
Background:	This gene encodes a member of the Aurora subfamily of serine/threonine protein kinases. The encoded protein is a chromosomal passenger protein that forms complexes with Aurora-B and inner centromere proteins and may play a role in organizing microtubules in relation to centrosome/spindle function during mitosis. This gene is overexpressed in several cancer cell lines, suggesting an involvement in oncogenic signal transduction. Alternative splicing results in multiple transcript variants.
Synonyms:	AIE2; AIK3; ARK3; AurC; aurora-C; HEL-S-90; SPGF5; STK13



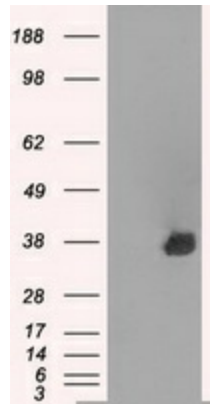
[View online »](#)

Protein Families: Druggable Genome, Protein Kinase

Product images:



Anti-AURKC mouse monoclonal antibody ([TA500554]) immunofluorescent staining of COS7 cells transiently transfected by pCMV6-ENTRY AURKC ([RC213890]).



HEK293T cells were transfected with the pCMV6-ENTRY control (Cat# [PS100001], Left lane) or pCMV6-ENTRY AURKC (Cat# [RC213890], Right lane) cDNA for 48 hrs and lysed. Equivalent amounts of cell lysates (5 ug per lane) were separated by SDS-PAGE and immunoblotted with anti-AURKC(Cat# [TA500554]). Positive lysates [LY423127] (100ug) and [LC423127] (20ug) can be purchased separately from OriGene.