

## Product datasheet for **TA500552M**

### **SATB1 Mouse Monoclonal Antibody [Clone ID: OTI10G2]**

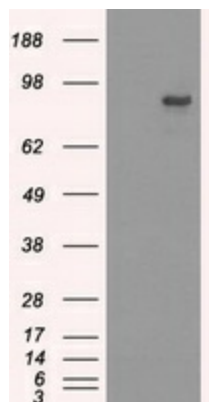
#### **Product data:**

Product Type:	Primary Antibodies
Clone Name:	OTI10G2
Applications:	IF, IHC, WB
Recommended Dilution:	WB 1:2000, IHC 1:50, IF 1:100
Reactivity:	Human, Mouse, Rat
Host:	Mouse
Isotype:	IgG1
Clonality:	Monoclonal
Immunogen:	Full-length protein expressed in 293T cell transfected with human SATB1 expression vector
Formulation:	PBS (pH 7.3) containing 1% BSA, 50% glycerol and 0.02% sodium azide.
Concentration:	0.8 mg/ml
Purification:	Purified from mouse ascites fluids or tissue culture supernatant by affinity chromatography (protein A/G)
Conjugation:	Unconjugated
Storage:	Store at -20°C as received.
Stability:	Stable for 12 months from date of receipt.
Predicted Protein Size:	86.0 kDa
Gene Name:	SATB homeobox 1
Database Link:	<a href="#">NP_002962</a> <a href="#">Entrez Gene 20230 Mouse</a> <a href="#">Entrez Gene 316164 Rat</a> <a href="#">Entrez Gene 6304 Human</a> <a href="#">Q01826</a>
Background:	The protein binds to DNA at special AT-rich sequences at nuclear matrix- or scaffold-associated regions. Thought to recognize the sugar-phosphate structure of double-stranded DNA.
Synonyms:	DNA-binding protein SATB1; SATB homeobox 1; scaffold-associating DNA's); special AT-rich sequence binding protein 1; special AT-rich sequence binding protein 1 (binds to nuclear matrix

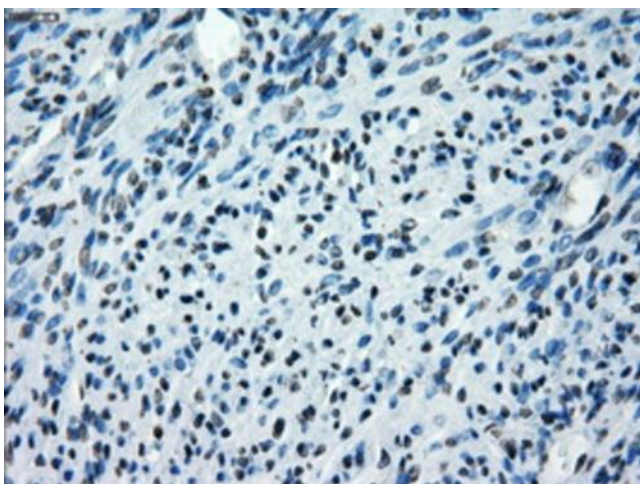

[View online »](#)

**Protein Families:** Druggable Genome, Transcription Factors

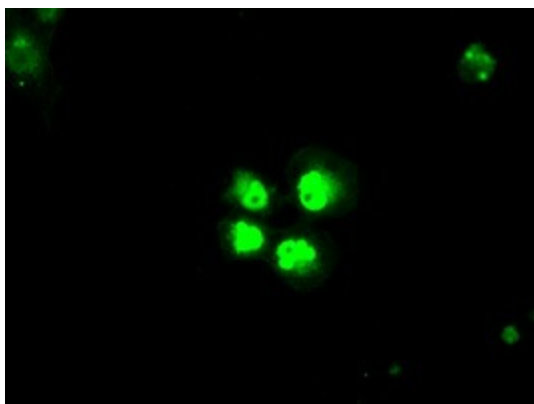
**Product images:**



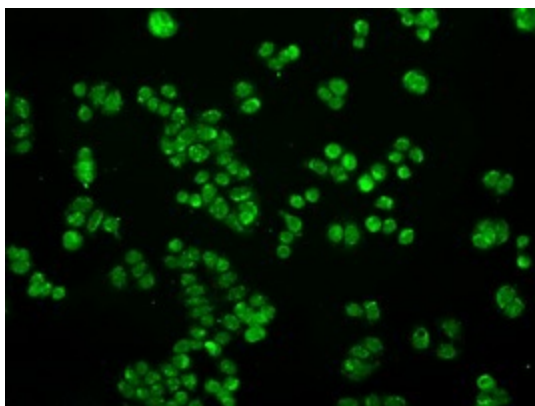
HEK293T cells were transfected with the pCMV6-ENTRY control (Left lane) or pCMV6-ENTRY SATB1 ([RC200421], Right lane) cDNA for 48 hrs and lysed. Equivalent amounts of cell lysates (5 ug per lane) were separated by SDS-PAGE and immunoblotted with anti-SATB1. Positive lysates [LY418976] (100ug) and [LC418976] (20ug) can be purchased separately from OriGene.



Immunohistochemical staining of paraffin-embedded endometrium tissue within the normal limits using anti-SATB1 mouse monoclonal antibody. Heat-induced epitope retrieval by EDTA solution buffer pH 8.0 at 120°C for 3 min.



Anti-SATB1 mouse monoclonal antibody ([TA500552]) immunofluorescent staining of COS7 cells transiently transfected by pCMV6-ENTRY SATB1 ([RC200421]).



Immunofluorescent staining of HT29 cells using anti-SATB1 mouse monoclonal antibody ([TA500552]).