

Product datasheet for **TA500551S**

NEK6 Mouse Monoclonal Antibody [Clone ID: OTI2H7]

Product data:

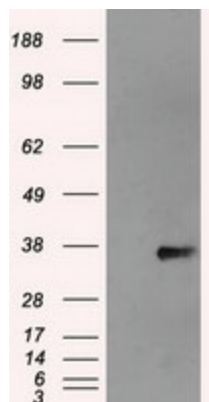
Product Type:	Primary Antibodies
Clone Name:	OTI2H7
Applications:	IHC, IP, WB
Recommended Dilution:	WB 1:1000, IHC 1:50, IP 2ug/500ul
Reactivity:	Human, Mouse, Rat
Host:	Mouse
Isotype:	IgG1
Clonality:	Monoclonal
Immunogen:	Full length human recombinant protein of human NEK6 (NP_055212) produced in HEK293T cell.
Formulation:	PBS (pH 7.3) containing 1% BSA, 50% glycerol and 0.02% sodium azide.
Concentration:	1 mg/ml
Purification:	Purified from mouse ascites fluids or tissue culture supernatant by affinity chromatography (protein A/G)
Conjugation:	Unconjugated
Storage:	Store at -20°C as received.
Stability:	Stable for 12 months from date of receipt.
Predicted Protein Size:	35.5 kDa
Gene Name:	NIMA related kinase 6
Database Link:	NP_055212 Entrez Gene 59126 Mouse Entrez Gene 360161 Rat Entrez Gene 10783 Human Q9HC98
Background:	The <i>Aspergillus nidulans</i> 'never in mitosis A' (NIMA) gene encodes a serine/threonine kinase that controls initiation of mitosis. NIMA-related kinases (NEKs) are a group of protein kinases that are homologous to NIMA. Evidence suggests that NEKs perform functions similar to those of NIMA. [supplied by OMIM]
Synonyms:	SID6-1512



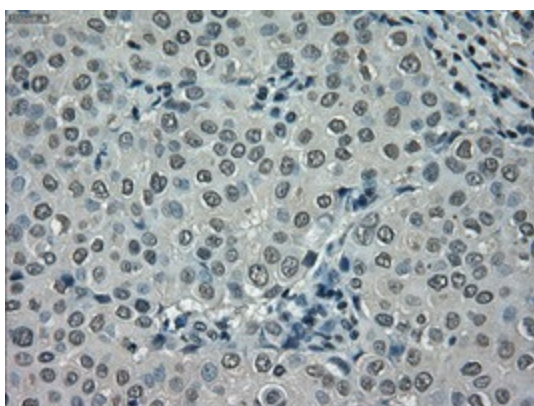
[View online »](#)

Protein Families: Druggable Genome, Protein Kinase

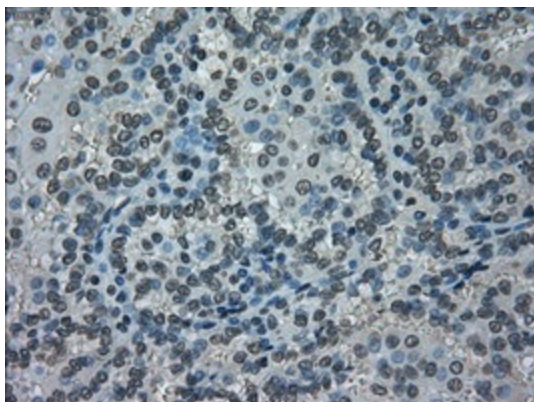
Product images:



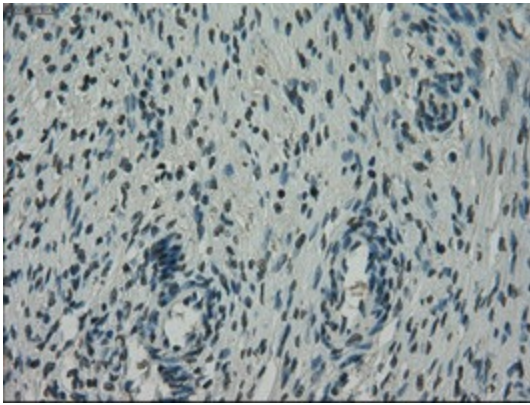
HEK293T cells were transfected with the pCMV6-ENTRY control (Left lane) or pCMV6-ENTRY NEK6 ([RC203609], Right lane) cDNA for 48 hrs and lysed. Equivalent amounts of cell lysates (5 ug per lane) were separated by SDS-PAGE and immunoblotted with anti-NEK6. Positive lysates [LY402327] (100ug) and [LC402327] (20ug) can be purchased separately from OriGene.



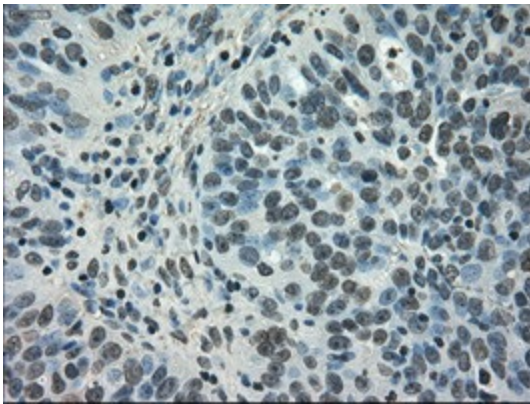
Immunohistochemical staining of paraffin-embedded Adenocarcinoma of Human breast tissue using anti-NEK6 mouse monoclonal antibody. (Heat-induced epitope retrieval by 10mM citric buffer, pH6.0, 100°C for 10min, [TA500551])



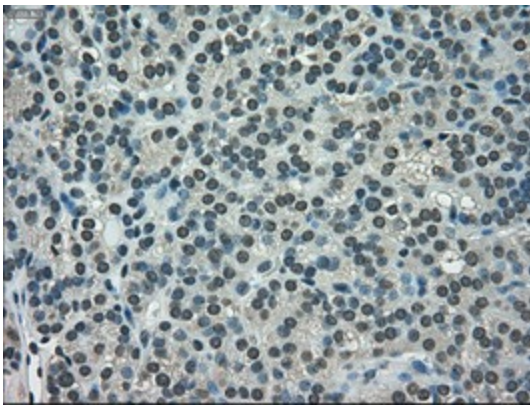
Immunohistochemical staining of paraffin-embedded Carcinoma of Human kidney tissue using anti-NEK6 mouse monoclonal antibody. (Heat-induced epitope retrieval by 10mM citric buffer, pH6.0, 100°C for 10min, [TA500551])



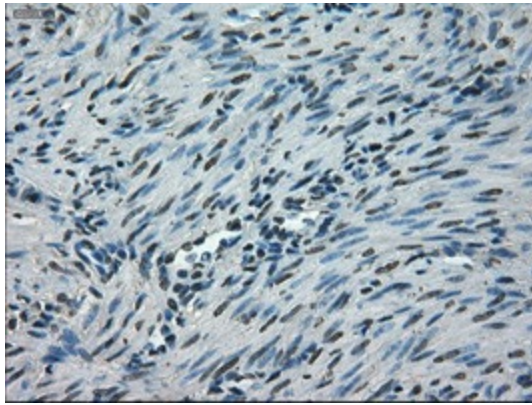
Immunohistochemical staining of paraffin-embedded Human Ovary tissue within the normal limits using anti-NEK6 mouse monoclonal antibody. (Heat-induced epitope retrieval by 10mM citric buffer, pH6.0, 100°C for 10min, [TA500551])



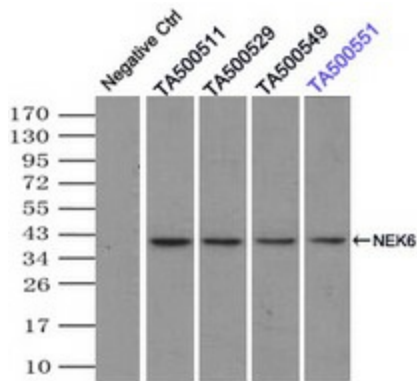
Immunohistochemical staining of paraffin-embedded Adenocarcinoma of Human ovary tissue using anti-NEK6 mouse monoclonal antibody. (Heat-induced epitope retrieval by 10mM citric buffer, pH6.0, 100°C for 10min, [TA500551])



Immunohistochemical staining of paraffin-embedded Carcinoma of Human thyroid tissue using anti-NEK6 mouse monoclonal antibody. (Heat-induced epitope retrieval by 10mM citric buffer, pH6.0, 100°C for 10min, [TA500551])



Immunohistochemical staining of paraffin-embedded Human endometrium tissue within the normal limits using anti-NEK6 mouse monoclonal antibody. (Heat-induced epitope retrieval by 10mM citric buffer, pH6.0, 100°C for 10min, [TA500551])



Immunoprecipitation (IP) of NEK6 by using TrueMab monoclonal anti-NEK6 antibodies (Negative control: IP without adding anti-NEK6 antibody.). For each experiment, 500ul of DDK tagged NEK6 overexpression lysates (at 1:5 dilution with HEK293T lysate), 2ug of anti-NEK6 antibody and 20ul (0.1mg) of goat anti-mouse conjugated magnetic beads were mixed and incubated overnight. After extensive wash to remove any non-specific binding, the immunoprecipitated products were analyzed with rabbit anti-DDK polyclonal antibody.