

## Product datasheet for **TA500532BM**

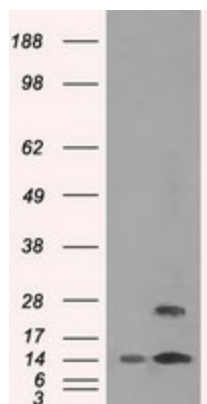
### **TMEM100 Mouse Monoclonal Antibody (HRP conjugated) [Clone ID: OTI10G3]**

#### **Product data:**

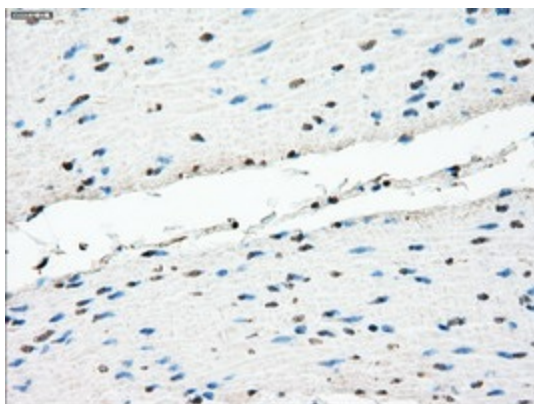
Product Type:	Primary Antibodies
Clone Name:	OTI10G3
Applications:	IF, IHC, WB
Recommended Dilution:	WB 1:500, IHC 1:50, IF 1:100
Reactivity:	Human, Mouse, Rat
Host:	Mouse
Isotype:	IgG1
Clonality:	Monoclonal
Immunogen:	Full length human recombinant protein of human TMEM100 (NP_060756) produced in HEK293T cell.
Formulation:	PBS (pH 7.3) containing 1% BSA, 50% glycerol.
Concentration:	0.5 mg/ml
Purification:	Purified from mouse ascites fluids or tissue culture supernatant by affinity chromatography (protein A/G)
Conjugation:	HRP
Storage:	Store at -20°C as received.
Stability:	Stable for 12 months from date of receipt.
Predicted Protein Size:	14.4 kDa
Gene Name:	transmembrane protein 100
Database Link:	<a href="#">NP_060756</a> <a href="#">Entrez Gene 55273 Human</a> <a href="#">Q9NV29</a>
Synonyms:	FLJ10970; FLJ37856
Protein Families:	Transmembrane



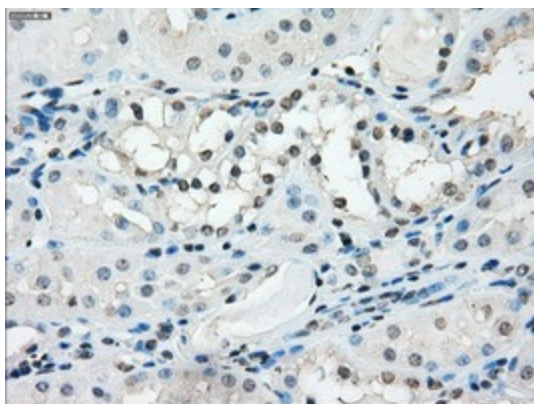
[View online »](#)

**Product images:**

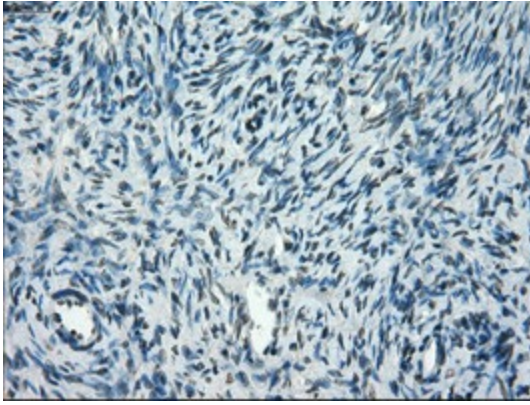
HEK293T cells were transfected with the pCMV6-ENTRY control (Cat# [PS100001], Left lane) or pCMV6-ENTRY TMEM100 (Cat# [RC203980], Right lane) cDNA for 48 hrs and lysed. Equivalent amounts of cell lysates (5 ug per lane) were separated by SDS-PAGE and immunoblotted with anti-TMEM100 (Cat# [TA500532]). Positive lysates [LY402665] (100ug) and [LC402665] (20ug) can be purchased separately from OriGene.



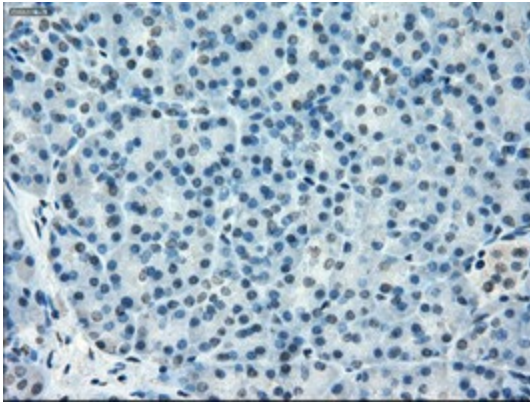
Immunohistochemical staining of paraffin-embedded Human colon tissue within the normal limits using anti-TMEM100 mouse monoclonal antibody. (Heat-induced epitope retrieval by 10mM citric buffer, pH6.0, 100°C for 10min, [TA500532])



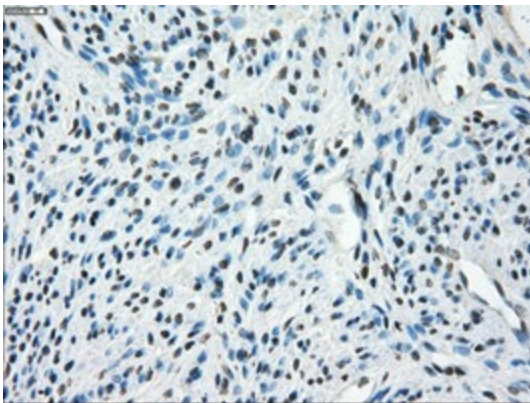
Immunohistochemical staining of paraffin-embedded Human Kidney tissue within the normal limits using anti-TMEM100 mouse monoclonal antibody. (Heat-induced epitope retrieval by 10mM citric buffer, pH6.0, 100°C for 10min, [TA500532])



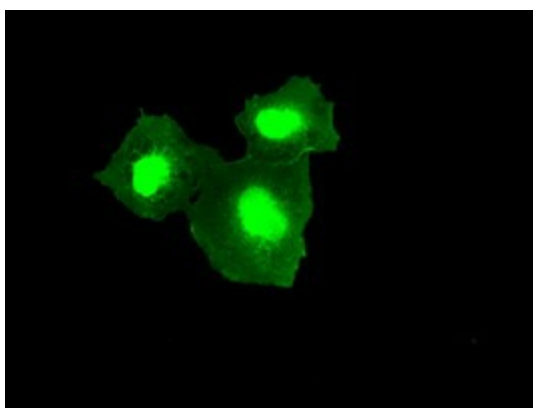
Immunohistochemical staining of paraffin-embedded Human Ovary tissue within the normal limits using anti-TMEM100 mouse monoclonal antibody. (Heat-induced epitope retrieval by 10mM citric buffer, pH6.0, 100°C for 10min, [TA500532])



Immunohistochemical staining of paraffin-embedded Human pancreas tissue within the normal limits using anti-TMEM100 mouse monoclonal antibody. (Heat-induced epitope retrieval by 10mM citric buffer, pH6.0, 100°C for 10min, [TA500532])



Immunohistochemical staining of paraffin-embedded Human endometrium tissue within the normal limits using anti-TMEM100 mouse monoclonal antibody. (Heat-induced epitope retrieval by 10mM citric buffer, pH6.0, 100°C for 10min, [TA500532])



Anti-TMEM100 mouse monoclonal antibody ([TA500532]) immunofluorescent staining of COS7 cells transiently transfected by pCMV6-ENTRY TMEM100 ([RC203980]).