

Product datasheet for **TA500527BM**

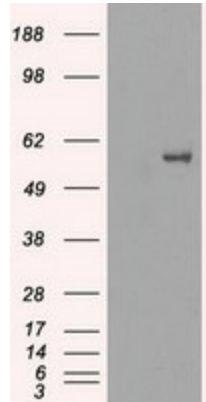
FRK Mouse Monoclonal Antibody (HRP conjugated) [Clone ID: OTI7H3]

Product data:

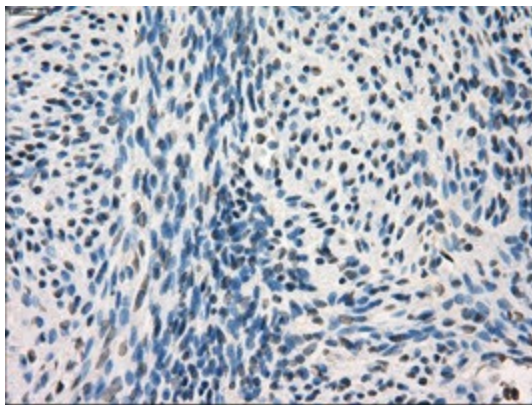
Product Type:	Primary Antibodies
Clone Name:	OTI7H3
Applications:	FC, IHC, WB
Recommended Dilution:	WB 1:500, IHC 1:50, FLOW 1:100
Reactivity:	Human, Mouse, Rat
Host:	Mouse
Isotype:	IgG1
Clonality:	Monoclonal
Immunogen:	Full length human recombinant protein of human FRK (NP_002022) produced in HEK293T cell.
Formulation:	PBS (pH 7.3) containing 1% BSA, 50% glycerol.
Concentration:	0.5 mg/ml
Purification:	Purified from mouse ascites fluids or tissue culture supernatant by affinity chromatography (protein A/G)
Conjugation:	HRP
Storage:	Store at -20°C as received.
Stability:	Stable for 12 months from date of receipt.
Predicted Protein Size:	58.1 kDa
Gene Name:	fyn related Src family tyrosine kinase
Database Link:	NP_002022 Entrez Gene 14302 Mouse Entrez Gene 79209 Rat Entrez Gene 2444 Human P42685
Background:	The protein encoded by this gene belongs to the TYR family of protein kinases. This tyrosine kinase is a nuclear protein and may function during G1 and S phase of the cell cycle and suppress growth. [provided by RefSeq]
Synonyms:	GTK; PTK5; RAK
Protein Families:	Druggable Genome, Protein Kinase



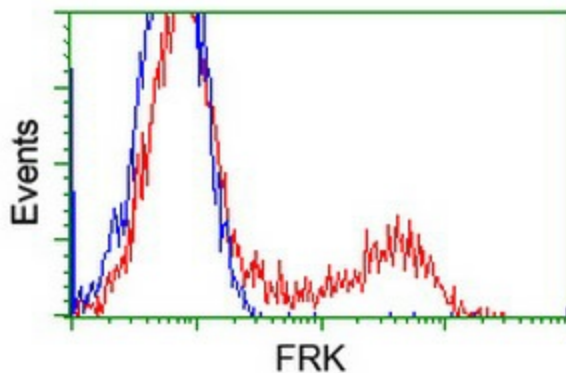
[View online »](#)

Product images:


HEK293T cells were transfected with the pCMV6-ENTRY control (Left lane) or pCMV6-ENTRY FRK ([RC204460], Right lane) cDNA for 48 hrs and lysed. Equivalent amounts of cell lysates (5 ug per lane) were separated by SDS-PAGE and immunoblotted with anti-FRK. Positive lysates [LY400740] (100ug) and [LC400740] (20ug) can be purchased separately from OriGene.



Immunohistochemical staining of paraffin-embedded Human endometrium tissue within the normal limits using anti-FRK mouse monoclonal antibody. (Heat-induced epitope retrieval by 10mM citric buffer, pH6.0, 100°C for 10min, [TA500527])



HEK293T cells transfected with either [RC204460] overexpress plasmid (Red) or empty vector control plasmid (Blue) were immunostained by anti-FRK antibody ([TA500527]), and then analyzed by flow cytometry.