

Product datasheet for **TA500519**

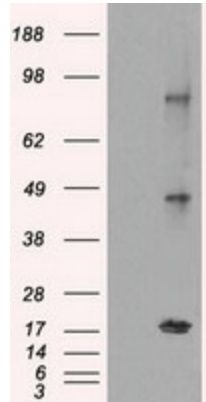
NY-ESO-1 (CTAG1B) Mouse Monoclonal Antibody [Clone ID: OTI3C9]

Product data:

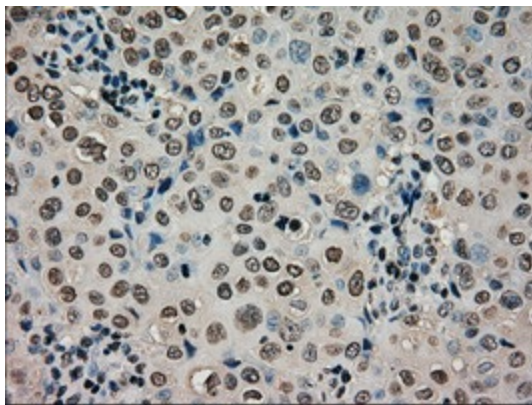
| | |
|-------------------------|--|
| Product Type: | Primary Antibodies |
| Clone Name: | OTI3C9 |
| Applications: | FC, IF, IHC, WB |
| Recommended Dilution: | WB 1:2000, IHC 1:50, IF 1:50 |
| Reactivity: | Human |
| Host: | Mouse |
| Isotype: | IgG1 |
| Clonality: | Monoclonal |
| Immunogen: | Full length human recombinant protein of human CTAG1B (NP_001318) produced in HEK293T cell. |
| Formulation: | PBS (pH 7.3) containing 1% BSA, 50% glycerol and 0.02% sodium azide. |
| Concentration: | 1 mg/ml |
| Purification: | Purified from mouse ascites fluids or tissue culture supernatant by affinity chromatography (protein A/G) |
| Conjugation: | Unconjugated |
| Storage: | Store at -20°C as received. |
| Stability: | Stable for 12 months from date of receipt. |
| Predicted Protein Size: | 17.8 kDa |
| Gene Name: | cancer/testis antigen 1B |
| Database Link: | NP_001318 Entrez Gene 1485 Human P78358 |
| Background: | Cancer/testis antigens, such as CTAG1B, are expressed in a variety of malignant tumors but solely in testis among normal adult tissues (Yoshida et al., 2006 [PubMed 16596224]). [supplied by OMIM] |
| Synonyms: | CT6.1; CTAG; CTAG1; ESO1; LAGE-2; LAGE2B; NY-ESO-1 |
| Protein Families: | Druggable Genome |



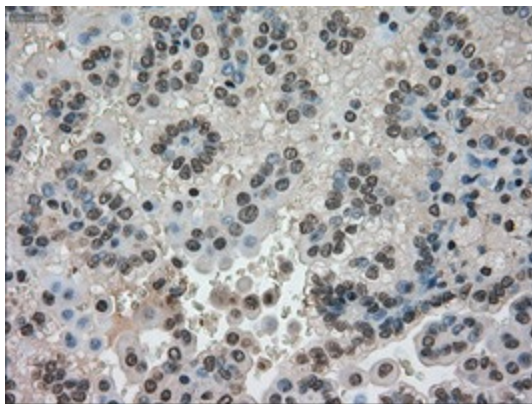
[View online »](#)

Product images:


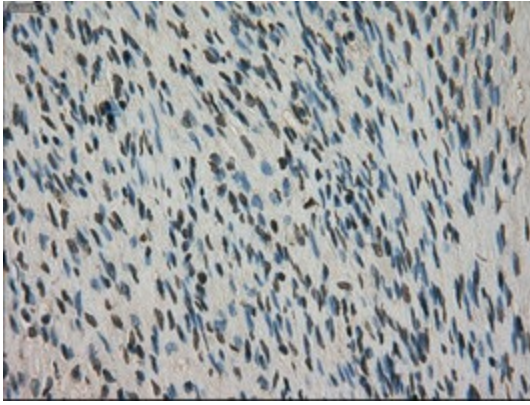
HEK293T cells were transfected with the pCMV6-ENTRY control (Left lane) or pCMV6-ENTRY CTAG1B ([RC213318], Right lane) cDNA for 48 hrs and lysed. Equivalent amounts of cell lysates (5 ug per lane) were separated by SDS-PAGE and immunoblotted with anti-CTAG1B. Positive lysates [LY400527] (100ug) and [LC400527] (20ug) can be purchased separately from OriGene.



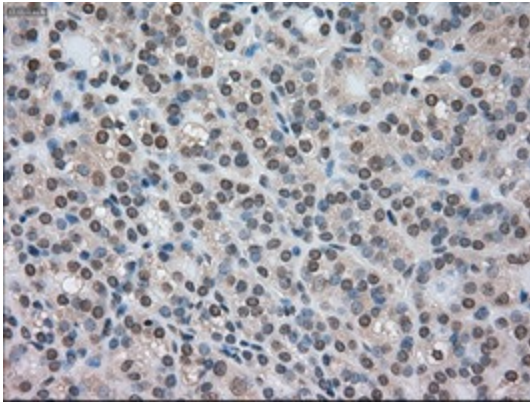
Immunohistochemical staining of paraffin-embedded Adenocarcinoma of Human breast tissue using anti-CTAG1B mouse monoclonal antibody. (Heat-induced epitope retrieval by 10mM citric buffer, pH6.0, 100°C for 10min, TA500519)



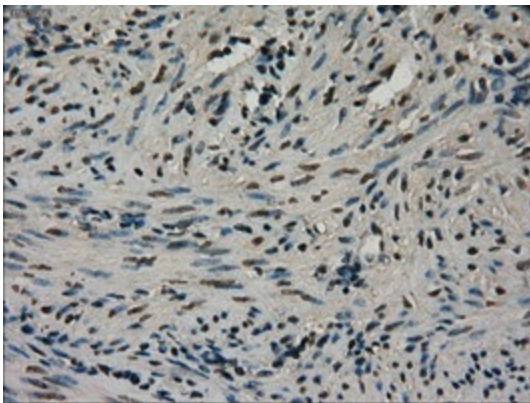
Immunohistochemical staining of paraffin-embedded Carcinoma of Human kidney tissue using anti-CTAG1B mouse monoclonal antibody. (Heat-induced epitope retrieval by 10mM citric buffer, pH6.0, 100°C for 10min, TA500519)



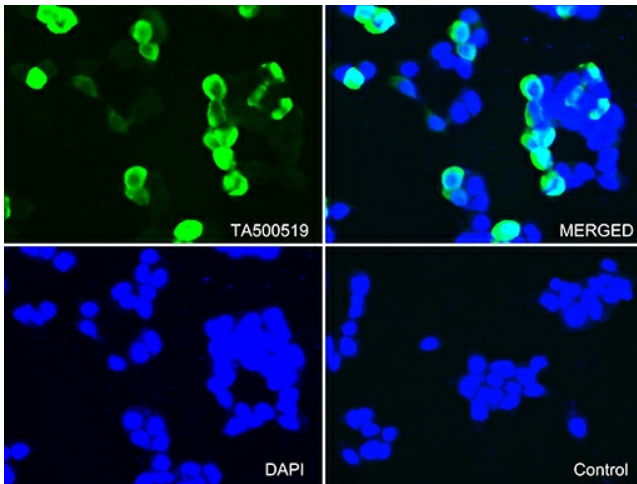
Immunohistochemical staining of paraffin-embedded Human Ovary tissue within the normal limits using anti-CTAG1B mouse monoclonal antibody. (Heat-induced epitope retrieval by 10mM citric buffer, pH6.0, 100°C for 10min, TA500519)



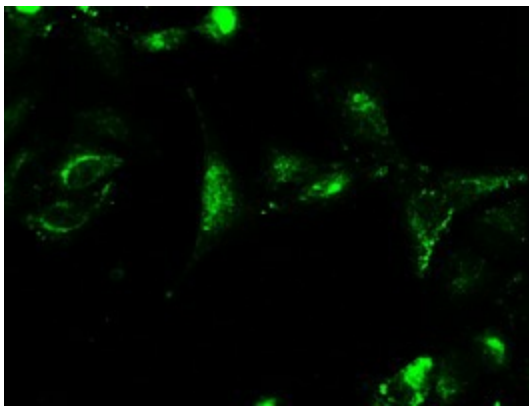
Immunohistochemical staining of paraffin-embedded Carcinoma of Human thyroid tissue using anti-CTAG1B mouse monoclonal antibody. (Heat-induced epitope retrieval by 10mM citric buffer, pH6.0, 100°C for 10min, TA500519)



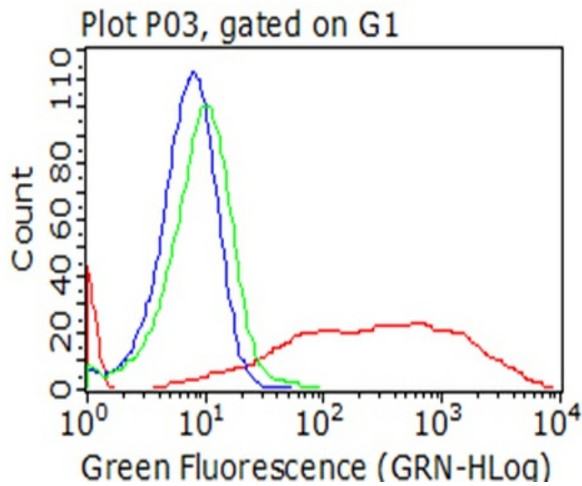
Immunohistochemical staining of paraffin-embedded Human endometrium tissue within the normal limits using anti-CTAG1B mouse monoclonal antibody. (Heat-induced epitope retrieval by 10mM citric buffer, pH6.0, 100°C for 10min, TA500519)



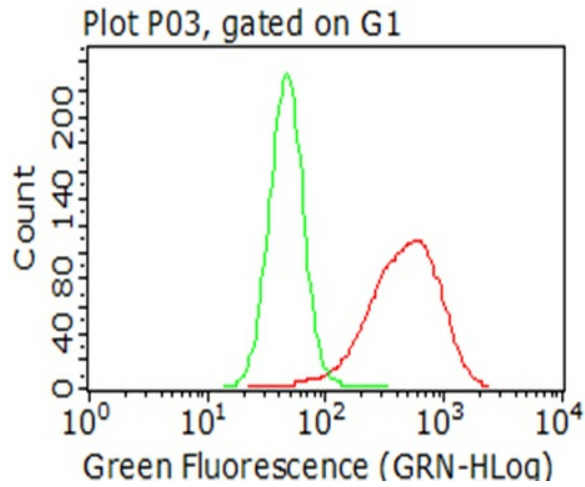
Immunofluorescent staining of 293T cells transfected by pCMV6-ENTRY CTAG1B ([RC213318]) using anti-CTAG1B antibody (TA500519/green, upper left; DAPI/blue, lower left; MERGED, upper right). 293T cells transfected with empty vector served as a negative control (MERGED, lower right) (1:100).



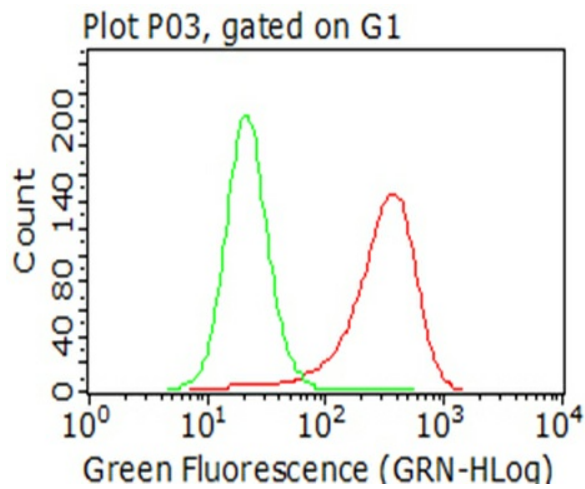
Immunofluorescent staining of A549 cells using anti-CTAG1B mouse monoclonal antibody (TA500519).



Flow cytometric analysis of living 293T cells transfected with CTAG1B overexpression plasmid ([RC213318], Red)/empty vector ([PS100001], Blue) using anti-CTAG1B antibody (TA500519). Cells incubated with a non-specific antibody (Green) were used as isotype control (1:100).



Flow cytometric analysis of living NCI-H1299 cells, using anti-CTAG1B antibody (TA500519, Red), compared to an isotype control (green) (1:100).



Flow cytometric analysis of living A375 cells, using anti-CTAG1B antibody (TA500519, Red), compared to an isotype control (green) (1:100).