

Product datasheet for **TA500514BM**

LAT2 (SLC7A8) Mouse Monoclonal Antibody (HRP conjugated) [Clone ID: OTI4A6]

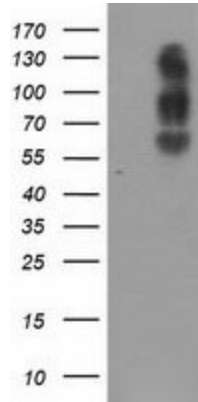
Product data:

Product Type:	Primary Antibodies
Clone Name:	OTI4A6
Applications:	FC, IF, WB
Recommended Dilution:	WB 1:500~2000, IF 1:100, FLOW 1:100
Reactivity:	Human, Monkey, Mouse, Rat
Host:	Mouse
Isotype:	IgG1
Clonality:	Monoclonal
Immunogen:	Full length human recombinant protein of human SLC7A8(NP_036376) produced in HEK293T cell.
Formulation:	PBS (pH 7.3) containing 1% BSA, 50% glycerol.
Concentration:	0.5 mg/ml
Purification:	Purified from mouse ascites fluids or tissue culture supernatant by affinity chromatography (protein A/G)
Conjugation:	HRP
Storage:	Store at -20°C as received.
Stability:	Stable for 12 months from date of receipt.
Predicted Protein Size:	58.2 kDa
Gene Name:	solute carrier family 7 member 8
Database Link:	NP_036376 Entrez Gene 50934 Mouse Entrez Gene 84551 Rat Entrez Gene 713511 Monkey Entrez Gene 23428 Human Q9UHI5
Synonyms:	LAT2; LPI-PC1
Protein Families:	Druggable Genome, Transmembrane

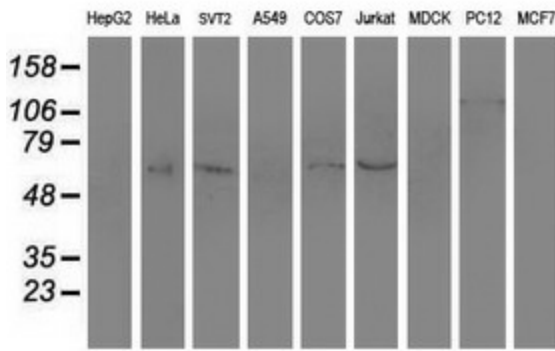


[View online »](#)

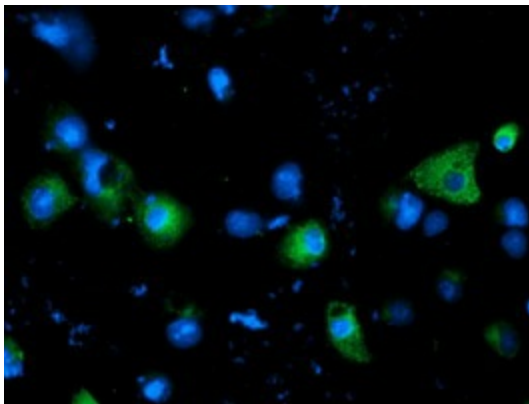
Product images:



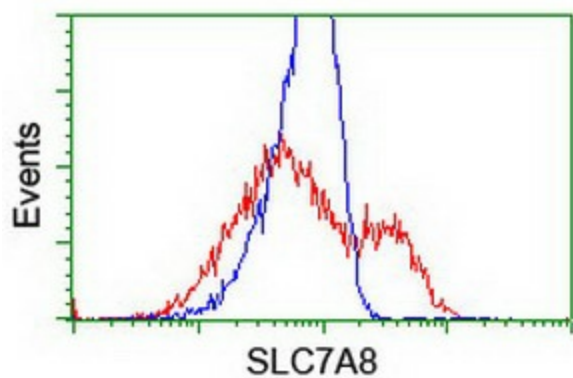
HEK293T cells were transfected with the pCMV6-ENTRY control (Left lane) or pCMV6-ENTRY SLC7A8 ([RC208586], Right lane) cDNA for 48 hrs and lysed. Equivalent amounts of cell lysates (5 ug per lane) were separated by SDS-PAGE and immunoblotted with anti-SLC7A8. Positive lysates [LY402177] (100ug) and [LC402177] (20ug) can be purchased separately from OriGene.



Western blot analysis of extracts (35ug) from 9 different cell lines by using anti-SLC7A8 monoclonal antibody.



Anti-SLC7A8 mouse monoclonal antibody ([TA500514]) immunofluorescent staining of COS7 cells transiently transfected by pCMV6-ENTRY SLC7A8 ([RC208586]).



HEK293T cells transfected with either [RC208586] overexpress plasmid (Red) or empty vector control plasmid (Blue) were immunostained by anti-SLC7A8 antibody ([TA500514]), and then analyzed by flow cytometry.