

Product datasheet for **TA500514AM**

LAT2 (SLC7A8) Mouse Monoclonal Antibody (Biotin conjugated) [Clone ID: OTI4A6]

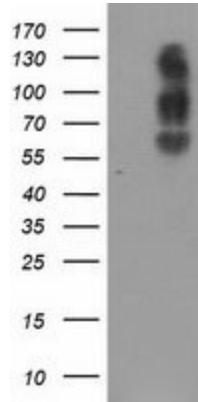
Product data:

| | |
|-------------------------|--|
| Product Type: | Primary Antibodies |
| Clone Name: | OTI4A6 |
| Applications: | FC, IF, WB |
| Recommended Dilution: | WB 1:500~2000, IF 1:100, FLOW 1:100 |
| Reactivity: | Human, Monkey, Mouse, Rat |
| Host: | Mouse |
| Isotype: | IgG1 |
| Clonality: | Monoclonal |
| Immunogen: | Full length human recombinant protein of human SLC7A8(NP_036376) produced in HEK293T cell. |
| Formulation: | PBS (pH 7.3) containing 1% BSA, 50% glycerol and 0.02% sodium azide. |
| Concentration: | 0.5 mg/ml |
| Purification: | Purified from mouse ascites fluids or tissue culture supernatant by affinity chromatography (protein A/G) |
| Conjugation: | Biotin |
| Storage: | Store at -20°C as received. |
| Stability: | Stable for 12 months from date of receipt. |
| Predicted Protein Size: | 58.2 kDa |
| Gene Name: | solute carrier family 7 member 8 |
| Database Link: | NP_036376 Entrez Gene 50934 Mouse Entrez Gene 84551 Rat Entrez Gene 713511 Monkey Entrez Gene 23428 Human Q9UHI5 |
| Synonyms: | LAT2; LPI-PC1 |
| Protein Families: | Druggable Genome, Transmembrane |

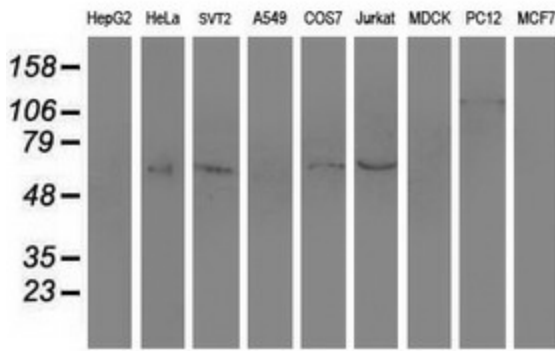


[View online »](#)

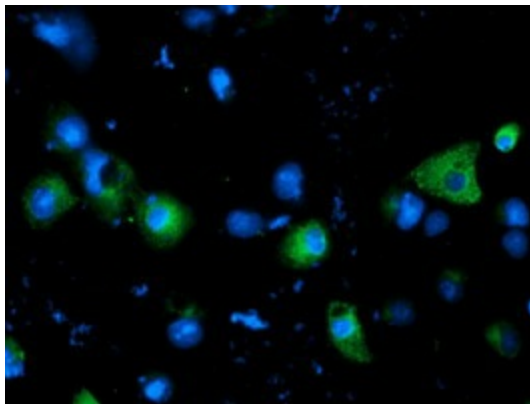
Product images:



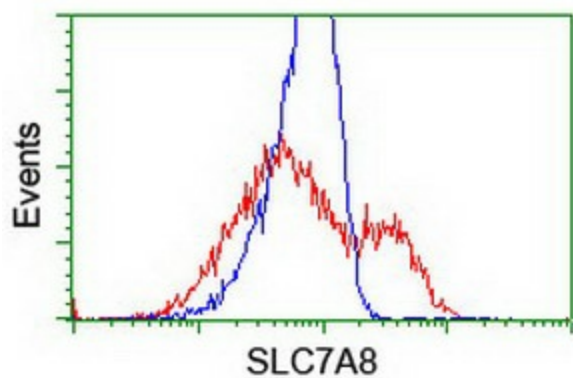
HEK293T cells were transfected with the pCMV6-ENTRY control (Left lane) or pCMV6-ENTRY SLC7A8 ([RC208586], Right lane) cDNA for 48 hrs and lysed. Equivalent amounts of cell lysates (5 ug per lane) were separated by SDS-PAGE and immunoblotted with anti-SLC7A8. Positive lysates [LY402177] (100ug) and [LC402177] (20ug) can be purchased separately from OriGene.



Western blot analysis of extracts (35ug) from 9 different cell lines by using anti-SLC7A8 monoclonal antibody.



Anti-SLC7A8 mouse monoclonal antibody ([TA500514]) immunofluorescent staining of COS7 cells transiently transfected by pCMV6-ENTRY SLC7A8 ([RC208586]).



HEK293T cells transfected with either [RC208586] overexpress plasmid (Red) or empty vector control plasmid (Blue) were immunostained by anti-SLC7A8 antibody ([TA500514]), and then analyzed by flow cytometry.