

## Product datasheet for **TA500512M**

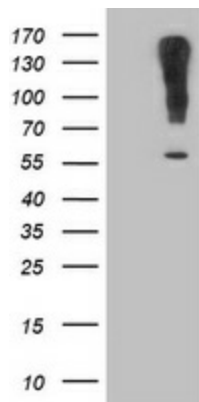
### **LAT2 (SLC7A8) Mouse Monoclonal Antibody [Clone ID: OTI7C2]**

#### **Product data:**

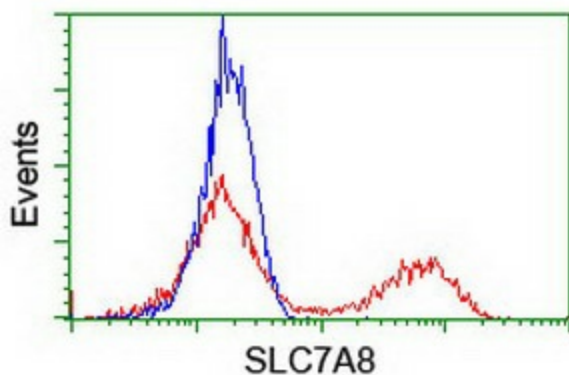
Product Type:	Primary Antibodies
Clone Name:	OTI7C2
Applications:	FC, WB
Recommended Dilution:	WB 1:500, FLOW 1:100
Reactivity:	Human, Mouse, Rat
Host:	Mouse
Isotype:	IgG1
Clonality:	Monoclonal
Immunogen:	Full length human recombinant protein of human SLC7A8(NP_036376) produced in HEK293T cell.
Formulation:	PBS (pH 7.3) containing 1% BSA, 50% glycerol and 0.02% sodium azide.
Concentration:	1 mg/ml
Purification:	Purified from mouse ascites fluids or tissue culture supernatant by affinity chromatography (protein A/G)
Conjugation:	Unconjugated
Storage:	Store at -20°C as received.
Stability:	Stable for 12 months from date of receipt.
Predicted Protein Size:	58.2 kDa
Gene Name:	solute carrier family 7 member 8
Database Link:	<a href="#">NP_036376</a> <a href="#">Entrez Gene 50934 Mouse</a> <a href="#">Entrez Gene 84551 Rat</a> <a href="#">Entrez Gene 23428 Human</a> <a href="#">Q9UHI5</a>
Synonyms:	LAT2; LPI-PC1
Protein Families:	Druggable Genome, Transmembrane


[View online »](#)

## Product images:



HEK293T cells were transfected with the pCMV6-ENTRY control (Left lane) or pCMV6-ENTRY SLC7A8 ([RC208586], Right lane) cDNA for 48 hrs and lysed. Equivalent amounts of cell lysates (5 ug per lane) were separated by SDS-PAGE and immunoblotted with anti-SLC7A8. Positive lysates [LY402177] (100ug) and [LC402177] (20ug) can be purchased separately from OriGene.



HEK293T cells transfected with either [RC208586] overexpress plasmid (Red) or empty vector control plasmid (Blue) were immunostained by anti-SLC7A8 antibody ([TA500512]), and then analyzed by flow cytometry.