

Product datasheet for **TA500510S**

TRIB2 Mouse Monoclonal Antibody [Clone ID: OTI8D11]

Product data:

Product Type:	Primary Antibodies
Clone Name:	OTI8D11
Applications:	FC, IF, IHC, WB
Recommended Dilution:	WB 1:1000~2000, IHC 1:50, IF 1:50, FLOW 1:100
Reactivity:	Human, Mouse
Host:	Mouse
Isotype:	IgG2b
Clonality:	Monoclonal
Immunogen:	Full length human recombinant protein of human TRIB2 (NP_067675) produced in HEK293T cell.
Formulation:	PBS (pH 7.3) containing 1% BSA, 50% glycerol and 0.02% sodium azide.
Concentration:	1 mg/ml
Purification:	Purified from mouse ascites fluids or tissue culture supernatant by affinity chromatography (protein A/G)
Conjugation:	Unconjugated
Storage:	Store at -20°C as received.
Stability:	Stable for 12 months from date of receipt.
Predicted Protein Size:	38.8 kDa
Gene Name:	tribbles pseudokinase 2
Database Link:	NP_067675 Entrez Gene 217410 Mouse Entrez Gene 28951 Human Q92519



[View online »](#)

Background:

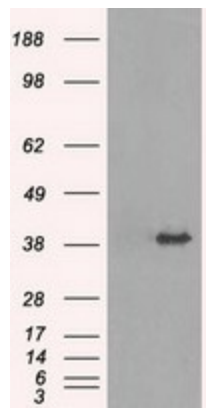
This gene encodes one of three members of the Tribbles family. The Tribbles members share a Trb domain, which is homologous to protein serine-threonine kinases, but lacks the active site lysine and probably lacks a catalytic function. The Tribbles proteins interact and modulate the activity of signal transduction pathways in a number of physiological and pathological processes. This Tribbles member induces apoptosis of cells mainly of the hematopoietic origin. It has been identified as a protein up-regulated by inflammatory stimuli in myeloid (THP-1) cells, and also as an oncogene that inactivates the transcription factor C/EBPalpha (CCAAT/enhancer-binding protein alpha) and causes acute myelogenous leukemia. Alternatively spliced transcript variants have been found for this gene.

Synonyms:

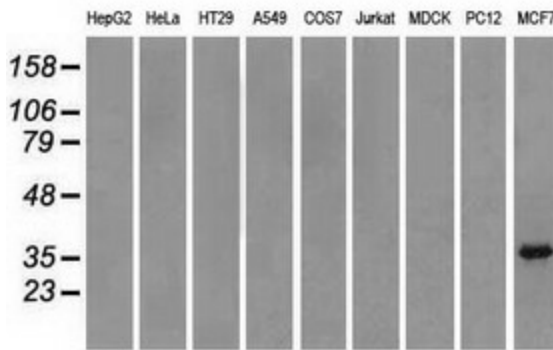
C5FW; GS3955; TRB2

Protein Families:

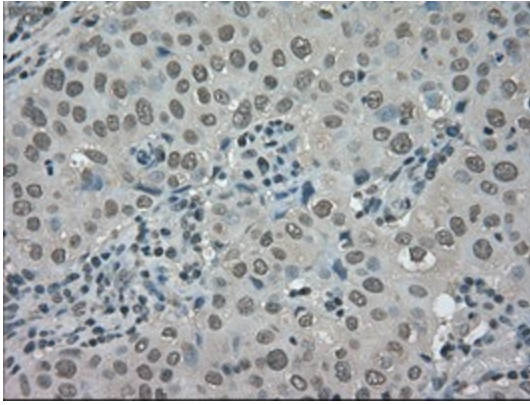
Druggable Genome, Protein Kinase

Product images:


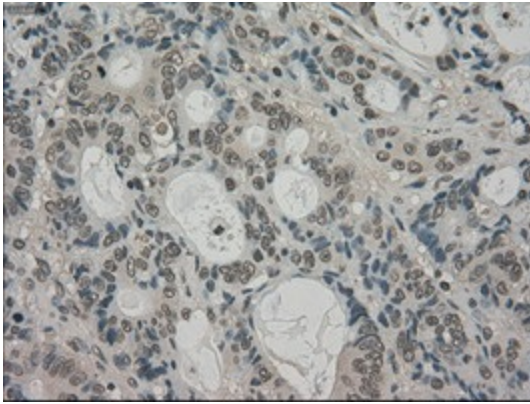
HEK293T cells were transfected with the pCMV6-ENTRY control (Cat# [PS100001], Left lane) or pCMV6-ENTRY TRIB2 (Cat# [RC201210], Right lane) cDNA for 48 hrs and lysed. Equivalent amounts of cell lysates (5 ug per lane) were separated by SDS-PAGE and immunoblotted with anti-TRIB2(Cat# [TA500510]). Positive lysates [LY402872] (100ug) and [LC402872] (20ug) can be purchased separately from OriGene.



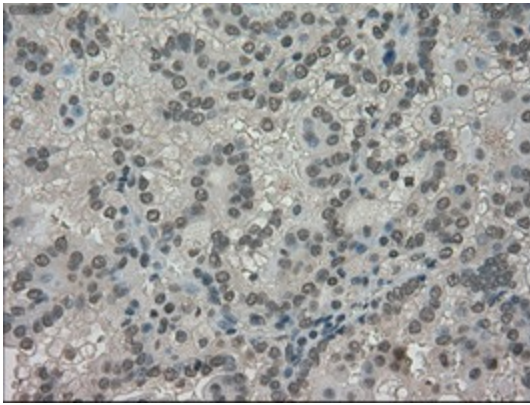
Western blot analysis of extracts (35ug) from 9 different cell lines by using anti-TRIB2 monoclonal antibody.



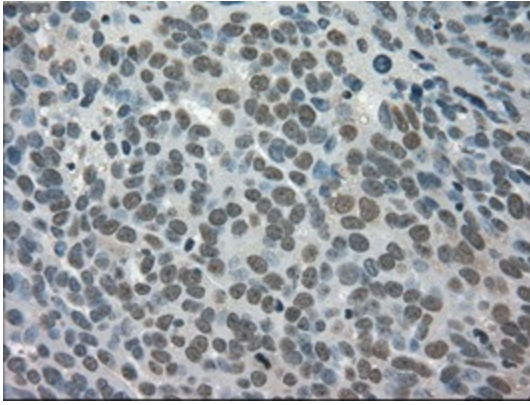
Immunohistochemical staining of paraffin-embedded Adenocarcinoma of Human breast tissue using anti-TRIB2 mouse monoclonal antibody. (Heat-induced epitope retrieval by 10mM citric buffer, pH6.0, 100°C for 10min, [TA500510])



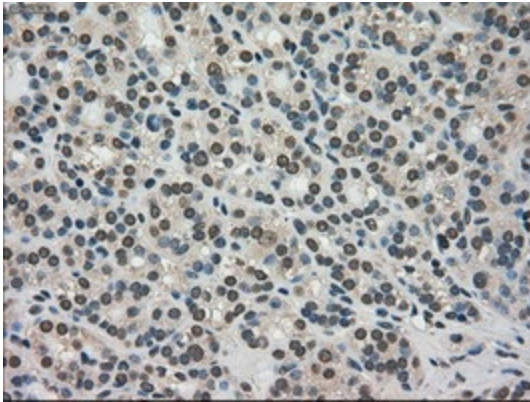
Immunohistochemical staining of paraffin-embedded Adenocarcinoma of Human colon tissue using anti-TRIB2 mouse monoclonal antibody. (Heat-induced epitope retrieval by 10mM citric buffer, pH6.0, 100°C for 10min, [TA500510])



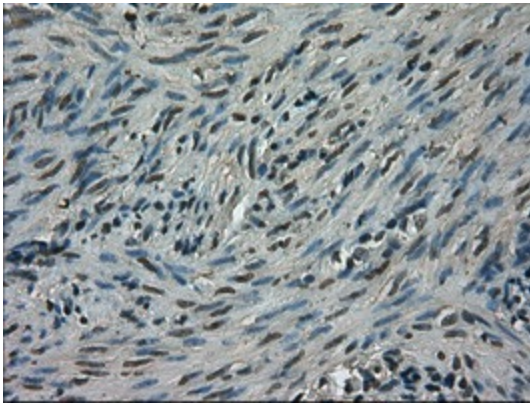
Immunohistochemical staining of paraffin-embedded Carcinoma of Human kidney tissue using anti-TRIB2 mouse monoclonal antibody. (Heat-induced epitope retrieval by 10mM citric buffer, pH6.0, 100°C for 10min, [TA500510])



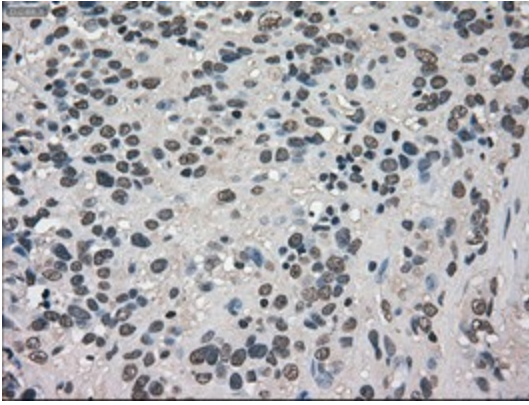
Immunohistochemical staining of paraffin-embedded Adenocarcinoma of Human ovary tissue using anti-TRIB2 mouse monoclonal antibody. (Heat-induced epitope retrieval by 10mM citric buffer, pH6.0, 100°C for 10min, [TA500510])



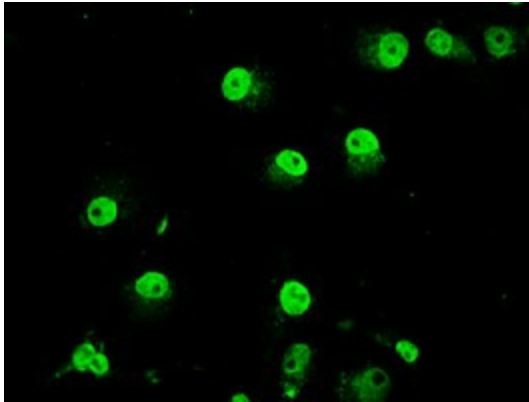
Immunohistochemical staining of paraffin-embedded Carcinoma of Human thyroid tissue using anti-TRIB2 mouse monoclonal antibody. (Heat-induced epitope retrieval by 10mM citric buffer, pH6.0, 100°C for 10min, [TA500510])



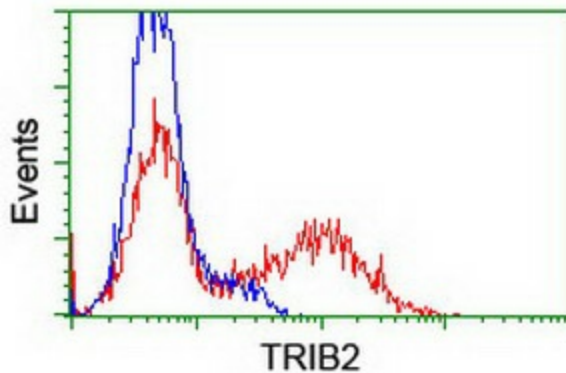
Immunohistochemical staining of paraffin-embedded Human endometrium tissue within the normal limits using anti-TRIB2 mouse monoclonal antibody. (Heat-induced epitope retrieval by 10mM citric buffer, pH6.0, 100°C for 10min, [TA500510])



Immunohistochemical staining of paraffin-embedded Carcinoma of Human bladder tissue using anti-TRIB2 mouse monoclonal antibody. (Heat-induced epitope retrieval by 10mM citric buffer, pH6.0, 100°C for 10min, [TA500510])



Immunofluorescent staining of COS7 cells using anti-TRIB2 mouse monoclonal antibody ([TA500510]).



HEK293T cells transfected with either [RC201210] overexpress plasmid (Red) or empty vector control plasmid (Blue) were immunostained by anti-TRIB2 antibody ([TA500510]), and then analyzed by flow cytometry.