

Product datasheet for **TA500506BM**

VMAT2 (SLC18A2) Mouse Monoclonal Antibody (HRP conjugated) [Clone ID: OTI9E11]

Product data:

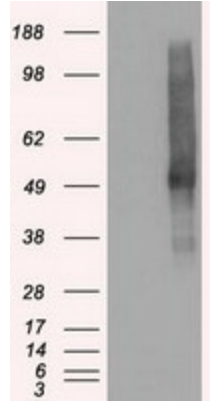
Product Type:	Primary Antibodies
Clone Name:	OTI9E11
Applications:	FC, IF, IHC, WB
Recommended Dilution:	WB 1:2000, IHC 1:50, IF 1:100, FLOW 1:100
Reactivity:	Human, Mouse, Rat
Host:	Mouse
Isotype:	IgG1
Clonality:	Monoclonal
Immunogen:	Full-length protein expressed in 293T cell transfected with human SLC18A2 expression vector .
Formulation:	PBS (pH 7.3) containing 1% BSA, 50% glycerol.
Concentration:	0.5 mg/ml
Purification:	Purified from mouse ascites fluids or tissue culture supernatant by affinity chromatography (protein A/G)
Conjugation:	HRP
Storage:	Store at -20°C as received.
Stability:	Stable for 12 months from date of receipt.
Predicted Protein Size:	55.7 kDa
Gene Name:	solute carrier family 18 member A2
Database Link:	NP_003045 Entrez Gene 25549 Rat Entrez Gene 214084 Mouse Entrez Gene 6571 Human Q05940
Background:	The vesicular monoamine transporter acts to accumulate cytosolic monoamines into synaptic vesicles, using the proton gradient maintained across the synaptic vesicular membrane. Its proper function is essential to the correct activity of the monoaminergic systems that have been implicated in several human neuropsychiatric disorders. The transporter is a site of action of important drugs, including reserpine and tetrabenazine.



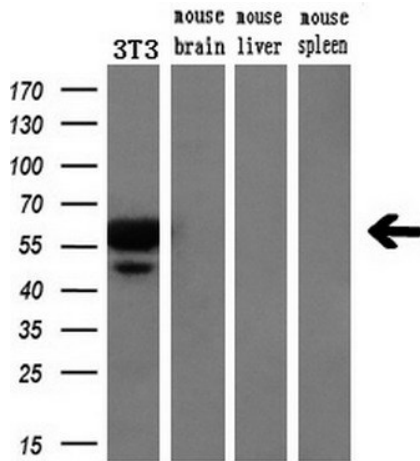
[View online »](#)

Synonyms: SVAT; SVMT; VAT2; VMAT2
Protein Families: Transmembrane
Protein Pathways: Parkinson's disease

Product images:



HEK293T cells were transfected with the pCMV6-ENTRY control (Cat# [PS100001], Left lane) or pCMV6-ENTRY SLC18A2 (Cat# [RC221342], Right lane) cDNA for 48 hrs and lysed. Equivalent amounts of cell lysates (5 ug per lane) were separated by SDS-PAGE and immunoblotted with anti-SLC18A2 (Cat# [TA500506]). Positive lysates [LY401066] (100ug) and [LC401066] (20ug) can be purchased separately from OriGene.



Western blot analysis of extracts (10ug) from a mouse cell line and 3 different mouse tissues by using anti-SLC18A2 monoclonal antibody (1:200).

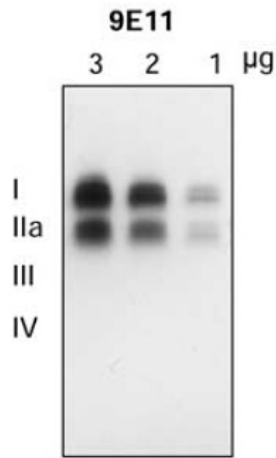
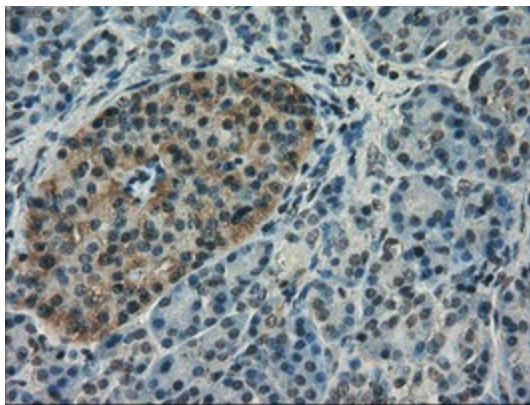
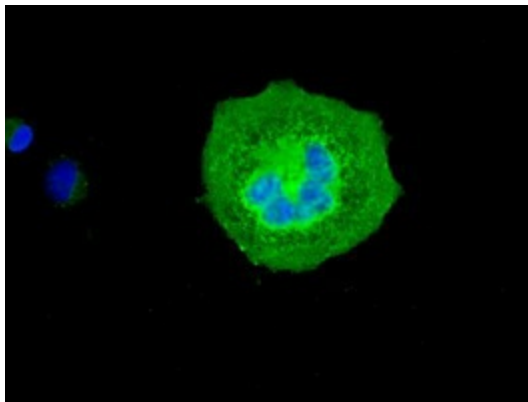


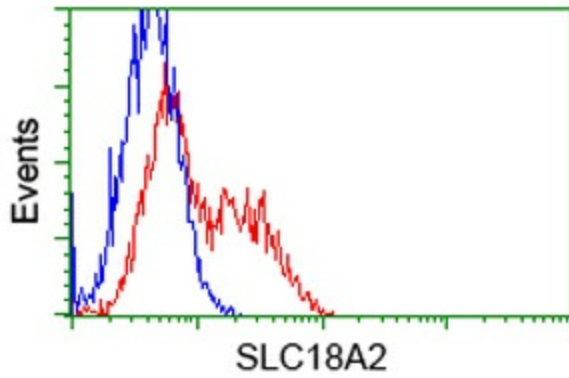
Figure from citation: Western Blot of SLC18A2 protein level by using anti-SLC18A2 (9E11) antibody in the striatum of autopsied human brain. [View Citation](#)



Immunohistochemical staining of paraffin-embedded Human pancreas tissue within the normal limits using anti-SLC18A2 mouse monoclonal antibody. (Heat-induced epitope retrieval by 10mM citric buffer, pH6.0, 100°C for 10min, [TA500506])



Anti-SLC18A2 mouse monoclonal antibody ([TA500506]) immunofluorescent staining of COS7 cells transiently transfected by pCMV6-ENTRY SLC18A2 ([RC221342]).



HEK293T cells transfected with either [RC221342] overexpress plasmid (Red) or empty vector control plasmid (Blue) were immunostained by anti-SLC18A2 antibody ([TA500506]), and then analyzed by flow cytometry.