

## Product datasheet for **TA500502**

### STK39 Mouse Monoclonal Antibody [Clone ID: OTI3C12]

#### Product data:

Product Type:	Primary Antibodies
Clone Name:	OTI3C12
Applications:	IF, IHC, WB
Recommended Dilution:	WB 1:2000, IHC 1:50, IF 1:50~100
Reactivity:	Human, Mouse, Rat
Host:	Mouse
Isotype:	IgG1
Clonality:	Monoclonal
Immunogen:	Full length human recombinant protein of human STK39 (NP_037365) produced in HEK293T cell.
Formulation:	PBS (pH 7.3) containing 1% BSA, 50% glycerol and 0.02% sodium azide.
Concentration:	1 mg/ml
Purification:	Purified from mouse ascites fluids or tissue culture supernatant by affinity chromatography (protein A/G)
Conjugation:	Unconjugated
Storage:	Store at -20°C as received.
Stability:	Stable for 12 months from date of receipt.
Predicted Protein Size:	59.3 kDa
Gene Name:	serine/threonine kinase 39
Database Link:	<a href="#">NP_037365</a> <a href="#">Entrez Gene 53416 Mouse</a> <a href="#">Entrez Gene 54348 Rat</a> <a href="#">Entrez Gene 27347 Human</a> <a href="#">Q9UEW8</a>
Background:	This gene encodes a serine/threonine kinase that is thought to function in the cellular stress response pathway. The kinase is activated in response to hypotonic stress, leading to phosphorylation of several cation-chloride-coupled cotransporters. The catalytically active kinase specifically activates the p38 MAP kinase pathway, and its interaction with p38 decreases upon cellular stress, suggesting that this kinase may serve as an intermediate in the response to cellular stress. [provided by RefSeq]

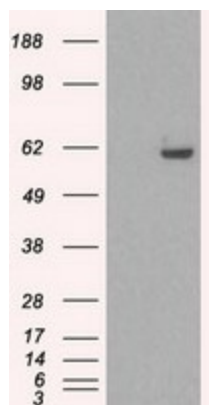


[View online »](#)

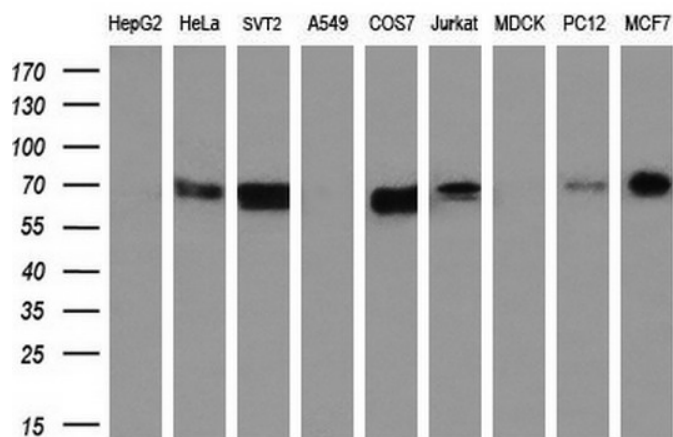
**Synonyms:** DCHT; PASK; SPAK

**Protein Families:** Druggable Genome, Protein Kinase

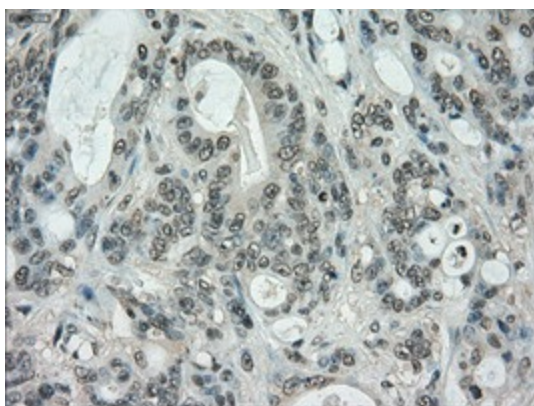
**Product images:**



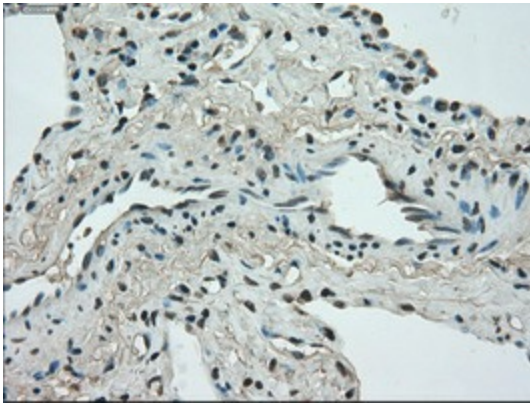
HEK293T cells were transfected with the pCMV6-ENTRY control (Left lane) or pCMV6-ENTRY STK39 ([RC223981], Right lane) cDNA for 48 hrs and lysed. Equivalent amounts of cell lysates (5 ug per lane) were separated by SDS-PAGE and immunoblotted with anti-STK39. Positive lysates [LY402227] (100ug) and [LC402227] (20ug) can be purchased separately from OriGene.



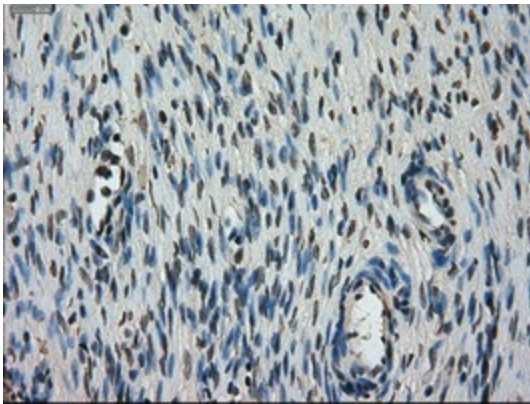
Western blot analysis of extracts (35ug) from 9 different cell lines by using anti-STK39 monoclonal antibody (HepG2: human; HeLa: human; SVT2: mouse; A549: human; COS7: monkey; Jurkat: human; MDCK: canine; PC12: rat; MCF7: human) (1:200).



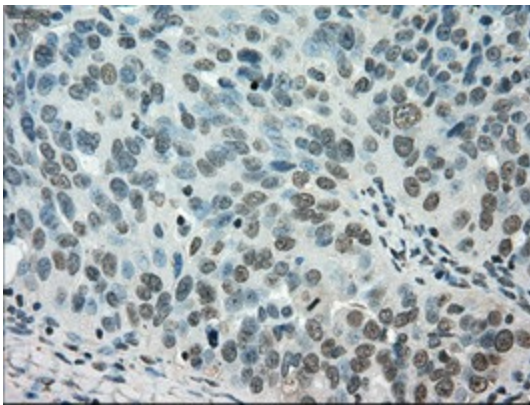
Immunohistochemical staining of paraffin-embedded Adenocarcinoma of Human colon tissue using anti-STK39 mouse monoclonal antibody. (Heat-induced epitope retrieval by 10mM citric buffer, pH6.0, 100°C for 10min, TA500502)



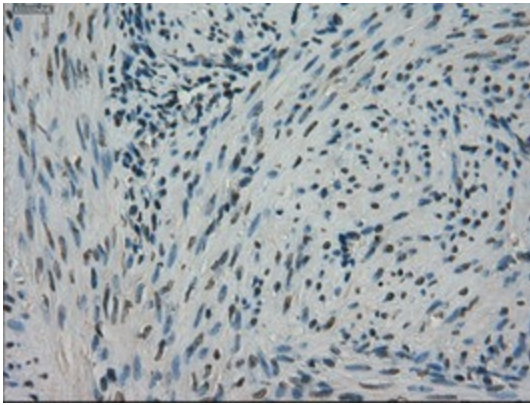
Immunohistochemical staining of paraffin-embedded Carcinoma of Human lung tissue using anti-STK39 mouse monoclonal antibody. (Heat-induced epitope retrieval by 10mM citric buffer, pH6.0, 100°C for 10min, TA500502)



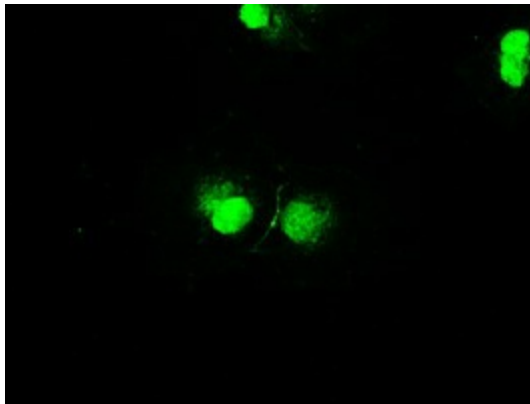
Immunohistochemical staining of paraffin-embedded Human Ovary tissue within the normal limits using anti-STK39 mouse monoclonal antibody. (Heat-induced epitope retrieval by 10mM citric buffer, pH6.0, 100°C for 10min, TA500502)



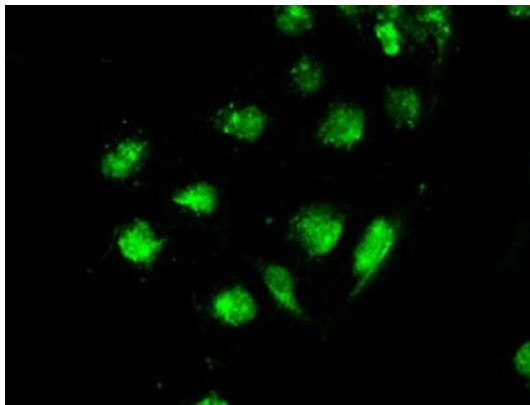
Immunohistochemical staining of paraffin-embedded Adenocarcinoma of Human ovary tissue using anti-STK39 mouse monoclonal antibody. (Heat-induced epitope retrieval by 10mM citric buffer, pH6.0, 100°C for 10min, TA500502)



Immunohistochemical staining of paraffin-embedded Human endometrium tissue within the normal limits using anti-STK39 mouse monoclonal antibody. (Heat-induced epitope retrieval by 10mM citric buffer, pH6.0, 100°C for 10min, TA500502)



Anti-STK39 mouse monoclonal antibody (TA500502) immunofluorescent staining of COS7 cells transiently transfected by pCMV6-ENTRY STK39 ([RC223981]).



Immunofluorescent staining of COS7 cells using anti-STK39 mouse monoclonal antibody (TA500502).