

Product datasheet for **TA500491AM**

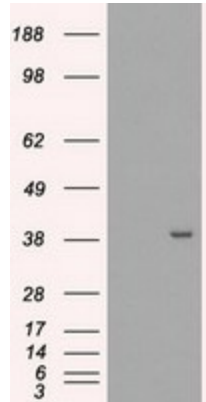
MRI1 Mouse Monoclonal Antibody (Biotin conjugated) [Clone ID: OTI9H7]

Product data:

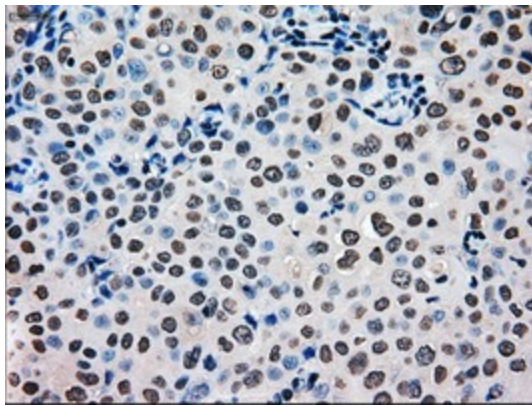
Product Type:	Primary Antibodies
Clone Name:	OTI9H7
Applications:	FC, IF, IHC, WB
Recommended Dilution:	WB 1:2000, IHC 1:50, IF 1:100, FLOW 1:100
Reactivity:	Human, Mouse, Rat
Host:	Mouse
Isotype:	IgG2b
Clonality:	Monoclonal
Immunogen:	Full length human recombinant protein of human MRI1 (NP_115661) produced in HEK293T cell.
Formulation:	PBS (pH 7.3) containing 1% BSA, 50% glycerol and 0.02% sodium azide.
Concentration:	0.5 mg/ml
Purification:	Purified from mouse ascites fluids or tissue culture supernatant by affinity chromatography (protein A/G)
Conjugation:	Biotin
Storage:	Store at -20°C as received.
Stability:	Stable for 12 months from date of receipt.
Predicted Protein Size:	39.1 kDa
Gene Name:	methylthioribose-1-phosphate isomerase 1
Database Link:	NP_001026897 Entrez Gene 84245 Human Q9BV20
Background:	Catalyzes the interconversion of methylthioribose-1-phosphate (MTR-1-P) into methylthioribulose-1-phosphate (MTRu-1-P) (By similarity).
Synonyms:	MRDI; MTNA; Ypr118w



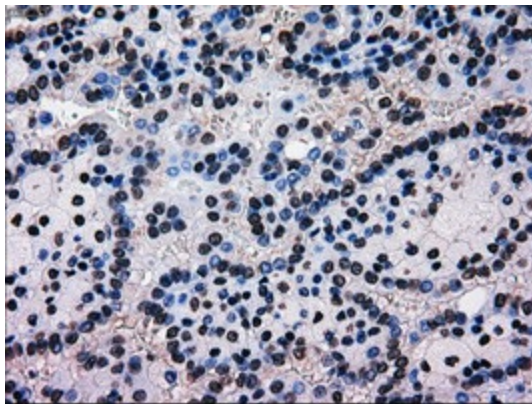
[View online »](#)

Product images:


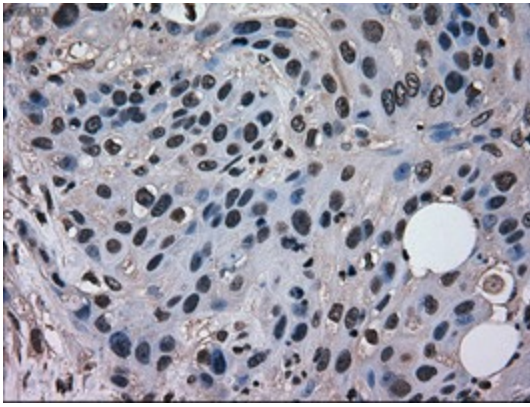
HEK293T cells were transfected with the pCMV6-ENTRY control (Left lane) or pCMV6-ENTRY MRI1 ([RC200993], Right lane) cDNA for 48 hrs and lysed. Equivalent amounts of cell lysates (5 ug per lane) were separated by SDS-PAGE and immunoblotted with anti-MRI1. Positive lysates [LY422176] (100ug) and [LC422176] (20ug) can be purchased separately from OriGene.



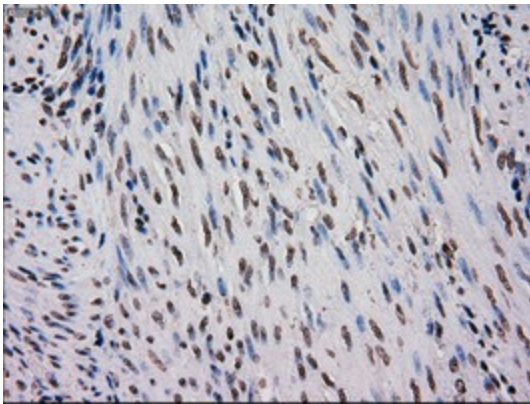
Immunohistochemical staining of paraffin-embedded Adenocarcinoma of Human breast tissue using anti-MRI1 mouse monoclonal antibody. (Heat-induced epitope retrieval by 10mM citric buffer, pH6.0, 100°C for 10min, [TA500491])



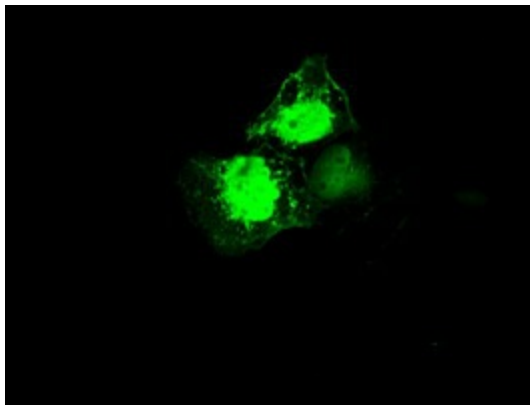
Immunohistochemical staining of paraffin-embedded Carcinoma of Human kidney tissue using anti-MRI1 mouse monoclonal antibody. (Heat-induced epitope retrieval by 10mM citric buffer, pH6.0, 100°C for 10min, [TA500491])



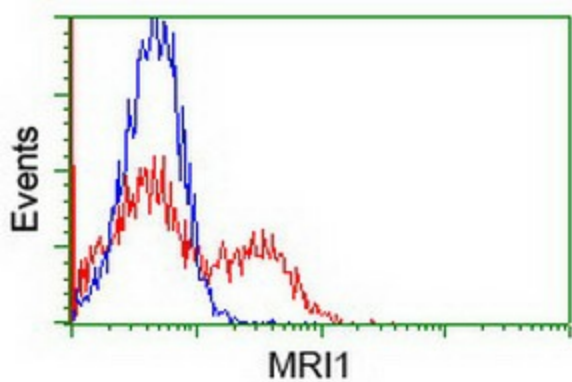
Immunohistochemical staining of paraffin-embedded Carcinoma of Human pancreas tissue using anti-MRI1 mouse monoclonal antibody. (Heat-induced epitope retrieval by 10mM citric buffer, pH6.0, 100°C for 10min, [TA500491])



Immunohistochemical staining of paraffin-embedded Human endometrium tissue within the normal limits using anti-MRI1 mouse monoclonal antibody. (Heat-induced epitope retrieval by 10mM citric buffer, pH6.0, 100°C for 10min, [TA500491])



Anti-MRI1 mouse monoclonal antibody ([TA500491]) immunofluorescent staining of COS7 cells transiently transfected by pCMV6-ENTRY MRI1 ([RC200993]).



HEK293T cells transfected with either [RC200993] overexpress plasmid (Red) or empty vector control plasmid (Blue) were immunostained by anti-MRI1 antibody ([TA500491]), and then analyzed by flow cytometry.