

Product datasheet for **TA500489BM**

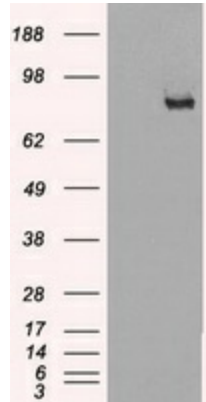
SCY1 like 3 (SCYL3) Mouse Monoclonal Antibody (HRP conjugated) [Clone ID: OTI7E7]

Product data:

Product Type:	Primary Antibodies
Clone Name:	OTI7E7
Applications:	WB
Recommended Dilution:	WB 1:500
Reactivity:	Human
Host:	Mouse
Isotype:	IgG2a
Clonality:	Monoclonal
Immunogen:	Full-length protein expressed in 293T cell transfected with human SCYL3 expression vector
Formulation:	PBS (pH 7.3) containing 1% BSA, 50% glycerol.
Concentration:	0.5 mg/ml
Purification:	Purified from mouse ascites fluids or tissue culture supernatant by affinity chromatography (protein A/G)
Conjugation:	HRP
Storage:	Store at -20°C as received.
Stability:	Stable for 12 months from date of receipt.
Predicted Protein Size:	82.8 kDa
Gene Name:	SCY1 like pseudokinase 3
Database Link:	NP_065156 Entrez Gene 57147 Human Q8IZE3
Background:	May play a role in regulating cell adhesion/migration complexes in migrating cells
Synonyms:	PACE-1; PACE1
Protein Families:	Druggable Genome, Protein Kinase



[View online »](#)

Product images:

HEK293T cells were transfected with the pCMV6-ENTRY control (Left lane) or pCMV6-ENTRY SCYL3 ([RC204859], Right lane) cDNA for 48 hrs and lysed. Equivalent amounts of cell lysates (5 ug per lane) were separated by SDS-PAGE and immunoblotted with anti-SCYL3. Positive lysates [LY412474] (100ug) and [LC412474] (20ug) can be purchased separately from OriGene.