

## Product datasheet for **TA500483BM**

### CD4 Mouse Monoclonal Antibody (HRP conjugated) [Clone ID: OTI18E3]

#### Product data:

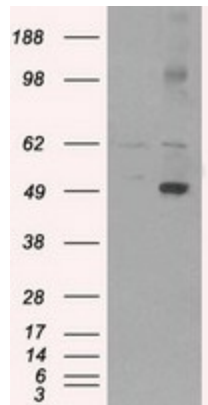
Product Type:	Primary Antibodies
Clone Name:	OTI18E3
Applications:	FC, WB
Recommended Dilution:	WB 1:1000~2000, FC 1:100
Reactivity:	Human, Rat
Host:	Mouse
Isotype:	IgG2b
Clonality:	Monoclonal
Immunogen:	Full length human recombinant protein of human CD4 (NP_000607) produced in HEK293T cell.
Formulation:	PBS (pH 7.3) containing 1% BSA, 50% glycerol.
Concentration:	0.5 mg/ml
Purification:	Purified from mouse ascites fluids or tissue culture supernatant by affinity chromatography (protein A/G)
Conjugation:	HRP
Storage:	Store at -20°C as received.
Stability:	Stable for 12 months from date of receipt.
Predicted Protein Size:	51.1 kDa
Gene Name:	CD4 molecule
Database Link:	<a href="#">NP_000607</a> <a href="#">Entrez Gene 24932 Rat</a> <a href="#">Entrez Gene 920 Human</a> <a href="#">P01730</a>
Background:	Accessory protein for MHC class-II antigen/T-cell receptor interaction. May regulate T-cell activation. Induces the aggregation of lipid rafts.
Synonyms:	CD4mut; IMD79; OKT4D
Protein Families:	Adult stem cells, Druggable Genome, ES Cell Differentiation/IPS, Induced pluripotent stem cells, Transmembrane



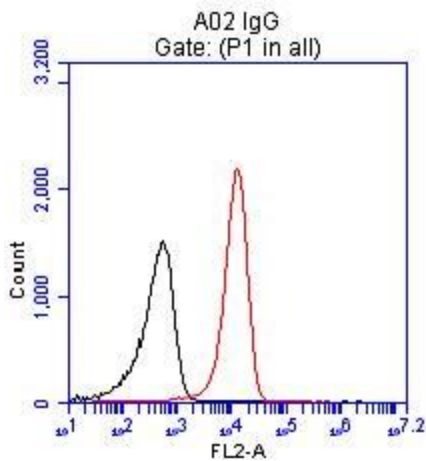
[View online »](#)

**Protein Pathways:** Antigen processing and presentation, Cell adhesion molecules (CAMs), Hematopoietic cell lineage, Primary immunodeficiency, T cell receptor signaling pathway

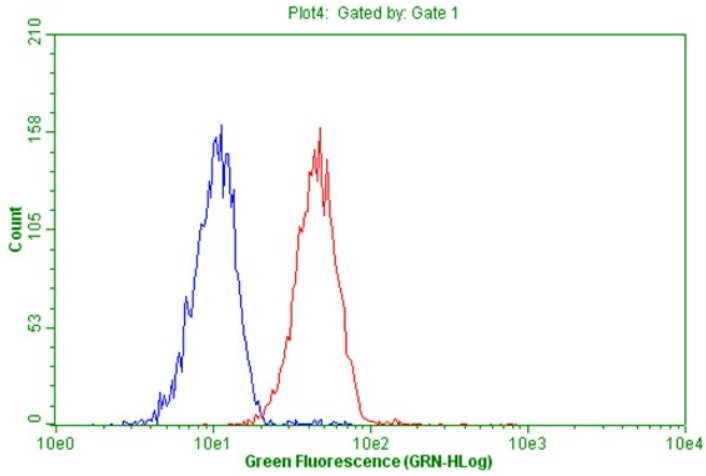
**Product images:**



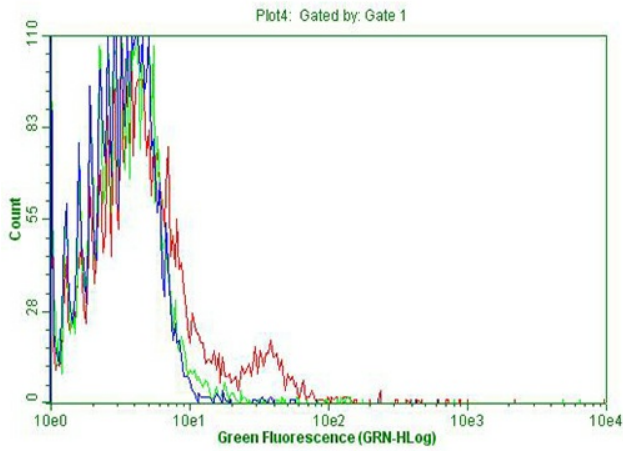
HEK293T cells were transfected with the pCMV6-ENTRY control (Left lane) or pCMV6-ENTRY CD4 ([RC206453], Right lane) cDNA for 48 hrs and lysed. Equivalent amounts of cell lysates (5 ug per lane) were separated by SDS-PAGE and immunoblotted with anti-CD4. Positive lysates [LY400209] (100ug) and [LC400209] (20ug) can be purchased separately from OriGene.



Flow cytometric Analysis of live Jurkat cells, using anti-CD4 antibody ([TA500483] at 1:100, Red), compared to IgG1 isotype control (Black).



Flow cytometric Analysis of living Molt-4 cells, using anti-CD4 antibody ([TA500483]) (Red), compared PBS (Blue).



Flow cytometric Analysis of living RBC-lysed human peripheral blood cells, using anti-CD4 antibody ([TA500483]), (Red), compared to an IgG isotype control, (green), and negative control (PBS), (Blue) (1:100).