

## Product datasheet for **TA500479S**

### CD4 Mouse Monoclonal Antibody [Clone ID: OTI4A11]

#### Product data:

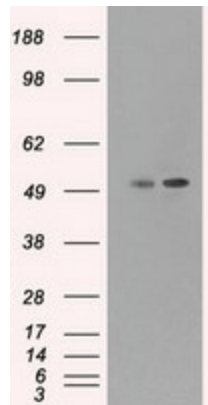
Product Type:	Primary Antibodies
Clone Name:	OTI4A11
Applications:	IF, WB
Recommended Dilution:	WB 1:200 - 1:1000, IF 1:100
Reactivity:	Human
Host:	Mouse
Isotype:	IgG2a
Clonality:	Monoclonal
Immunogen:	Full length human recombinant protein of human CD4 (NP_000607) produced in HEK293T cell.
Formulation:	PBS (pH 7.3) containing 1% BSA, 50% glycerol and 0.02% sodium azide.
Concentration:	1 mg/ml
Purification:	Purified from mouse ascites fluids or tissue culture supernatant by affinity chromatography (protein A/G)
Conjugation:	Unconjugated
Storage:	Store at -20°C as received.
Stability:	Stable for 12 months from date of receipt.
Predicted Protein Size:	51.1 kDa
Gene Name:	CD4 molecule
Database Link:	<a href="#">NP_000607</a> <a href="#">Entrez Gene 920 Human</a> <a href="#">P01730</a>
Background:	Accessory protein for MHC class-II antigen/T-cell receptor interaction. May regulate T-cell activation. Induces the aggregation of lipid rafts.
Synonyms:	CD4mut; IMD79; OKT4D
Protein Families:	Adult stem cells, Druggable Genome, ES Cell Differentiation/IPS, Induced pluripotent stem cells, Transmembrane



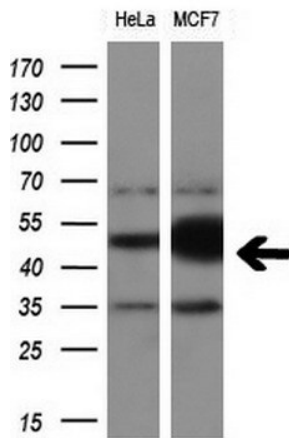
[View online »](#)

**Protein Pathways:** Antigen processing and presentation, Cell adhesion molecules (CAMs), Hematopoietic cell lineage, Primary immunodeficiency, T cell receptor signaling pathway

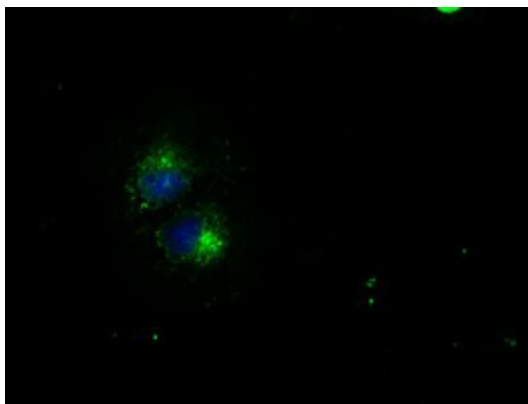
**Product images:**



HEK293T cells were transfected with the pCMV6-ENTRY control (Left lane) or pCMV6-ENTRY CD4 ([RC206453], Right lane) cDNA for 48 hrs and lysed. Equivalent amounts of cell lysates (5 ug per lane) were separated by SDS-PAGE and immunoblotted with anti-CD4. Positive lysates [LY400209] (100ug) and [LC400209] (20ug) can be purchased separately from OriGene.



Western blot analysis of extracts (10ug) from 2 different cell lines by using anti-CD4 monoclonal antibody at 1:200.



Anti-CD4 mouse monoclonal antibody ([TA500479]) immunofluorescent staining of COS7 cells transiently transfected by pCMV6-ENTRY CD4 ([RC206453]).