

## Product datasheet for **TA500455BM**

### Antithrombin III (SERPINC1) Mouse Monoclonal Antibody (HRP conjugated) [Clone ID: OTI8D5]

#### Product data:

Product Type:	Primary Antibodies
Clone Name:	OTI8D5
Applications:	FC, WB
Recommended Dilution:	FLOW 1:100
Reactivity:	Human, Mouse, Rat
Host:	Mouse
Isotype:	IgG2b
Clonality:	Monoclonal
Immunogen:	Full length human recombinant protein of human SERPINC1 (NP_000479) produced in HEK293T cell.
Formulation:	PBS (pH 7.3) containing 1% BSA, 50% glycerol.
Concentration:	0.5 mg/ml
Purification:	Purified from mouse ascites fluids or tissue culture supernatant by affinity chromatography (protein A/G)
Conjugation:	HRP
Storage:	Store at -20°C as received.
Stability:	Stable for 12 months from date of receipt.
Predicted Protein Size:	52.6 kDa
Gene Name:	serpin family C member 1
Database Link:	<a href="#">NP_000479</a> <a href="#">Entrez Gene 11905 Mouse</a> <a href="#">Entrez Gene 304917 Rat</a> <a href="#">Entrez Gene 462 Human</a> <a href="#">P01008</a>
Background:	Most important serine protease inhibitor in plasma that regulates the blood coagulation cascade. AT-III inhibits thrombin as well as factors IXa, Xa and XIa. Its inhibitory activity is greatly enhanced in the presence of heparin.
Synonyms:	AT3; AT3D; ATIII; THPH7

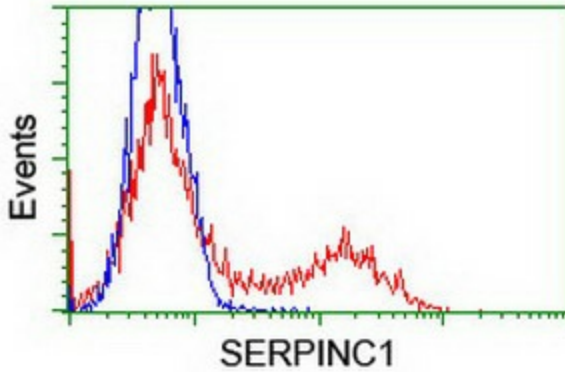


[View online »](#)

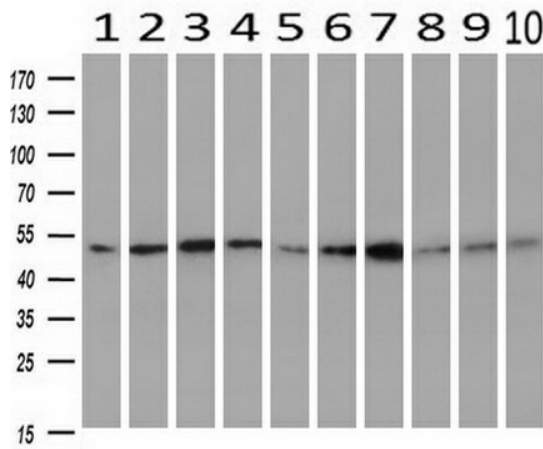
**Protein Families:** Druggable Genome, Secreted Protein

**Protein Pathways:** Complement and coagulation cascades

**Product images:**



HEK293T cells transfected with either [RC222845] overexpress plasmid (Red) or empty vector control plasmid (Blue) were immunostained by anti-SERPINC1 antibody ([TA500455]), and then analyzed by flow cytometry.



Western blot analysis of extracts (10ug) from 10 Human tissue by using anti-SERPINC1 monoclonal antibody at 1:500 (1: Testis; 2: Omentum; 3: Uterus; 4: Breast; 5: Brain; 6: Liver; 7: Ovary; 8: Thyroid gland; 9: colon; 10: spleen).