

Product datasheet for **TA500452AM**

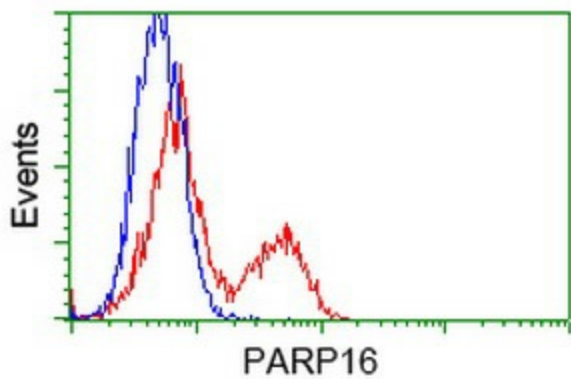
PARP16 Mouse Monoclonal Antibody (Biotin conjugated) [Clone ID: OTI2C8]

Product data:

Product Type:	Primary Antibodies
Clone Name:	OTI2C8
Applications:	FC
Recommended Dilution:	FLOW 1:100
Reactivity:	Human, Mouse, Rat
Host:	Mouse
Isotype:	IgG1
Clonality:	Monoclonal
Immunogen:	Full-length protein expressed in 293T cell transfected with human PARP16 expression vector .
Formulation:	PBS (pH 7.3) containing 1% BSA, 50% glycerol and 0.02% sodium azide.
Concentration:	0.5 mg/ml
Purification:	Purified from mouse ascites fluids or tissue culture supernatant by affinity chromatography (protein A/G)
Conjugation:	Biotin
Storage:	Store at -20°C as received.
Stability:	Stable for 12 months from date of receipt.
Predicted Protein Size:	36.4 kDa
Gene Name:	poly(ADP-ribose) polymerase family member 16
Database Link:	NP_060321 Entrez Gene 214424 Mouse Entrez Gene 315760 Rat Entrez Gene 54956 Human Q8N5Y8
Synonyms:	ARTD15; C15orf30; pART15
Protein Families:	Transmembrane



[View online »](#)

Product images:

HEK293T cells transfected with either [RC202846] overexpress plasmid (Red) or empty vector control plasmid (Blue) were immunostained by anti-PARP16 antibody ([TA500452]), and then analyzed by flow cytometry.