

Product datasheet for **TA500448AM**

CNDP1 Mouse Monoclonal Antibody (Biotin conjugated) [Clone ID: OTI2F8]

Product data:

Product Type:	Primary Antibodies
Clone Name:	OTI2F8
Applications:	IHC, WB
Recommended Dilution:	WB 1:2000, IHC 1:150
Reactivity:	Human
Host:	Mouse
Isotype:	IgG1
Clonality:	Monoclonal
Immunogen:	Full length human recombinant protein of human CNDP1 (NP_116038) produced in HEK293T cell.
Formulation:	PBS (pH 7.3) containing 1% BSA, 50% glycerol and 0.02% sodium azide.
Concentration:	0.5 mg/ml
Purification:	Purified from mouse ascites fluids or tissue culture supernatant by affinity chromatography (protein A/G)
Conjugation:	Biotin
Storage:	Store at -20°C as received.
Stability:	Stable for 12 months from date of receipt.
Predicted Protein Size:	56.7 kDa
Gene Name:	carnosine dipeptidase 1
Database Link:	NP_116038 Entrez Gene 84735 Human Q96KN2
Background:	This gene encodes a member of the M20 metalloprotease family. The encoded protein is specifically expressed in the brain, is a homodimeric dipeptidase which was identified as human carnosinase. This gene contains trinucleotide (CTG) repeat length polymorphism in the coding region.
Synonyms:	CN1; CPGL2; HsT2308

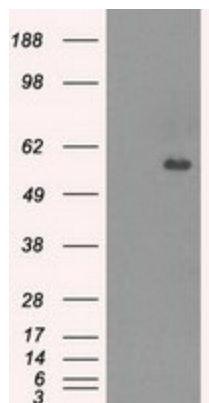


[View online »](#)

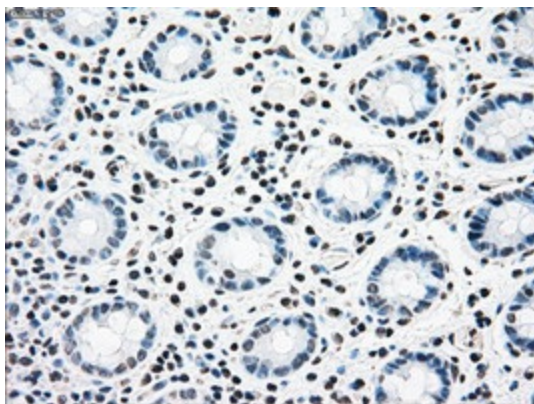
Protein Families: Protease, Secreted Protein

Protein Pathways: beta-Alanine metabolism, Histidine metabolism, Metabolic pathways

Product images:



HEK293T cells were transfected with the pCMV6-ENTRY control (Cat# [PS100001], Left lane) or pCMV6-ENTRY CNDP1 (Cat# [RC210312], Right lane) cDNA for 48 hrs and lysed. Equivalent amounts of cell lysates (5 ug per lane) were separated by SDS-PAGE and immunoblotted with anti-CNDP1 (Cat# [TA500448]). Positive lysates [LY403189] (100ug) and [LC403189] (20ug) can be purchased separately from OriGene.



Immunohistochemical staining of paraffin-embedded Human colon tissue within the normal limits using anti-CNDP1 mouse monoclonal antibody. (Heat-induced epitope retrieval by 10mM citric buffer, pH6.0, 100°C for 10min, [TA500448])