

## Product datasheet for **TA500447AM**

### **B Raf (BRAF) Mouse Monoclonal Antibody (Biotin conjugated) [Clone ID: OTI1G8]**

#### **Product data:**

Product Type:	Primary Antibodies
Clone Name:	OTI1G8
Applications:	IHC, WB
Recommended Dilution:	WB 1:2000
Reactivity:	Human, Mouse, Rat
Host:	Mouse
Isotype:	IgG2b
Clonality:	Monoclonal
Immunogen:	Full-length protein expressed in 293T cell transfected with human BRAF expression vector
Formulation:	PBS (pH 7.3) containing 1% BSA, 50% glycerol and 0.02% sodium azide.
Concentration:	0.5 mg/ml
Purification:	Purified from mouse ascites fluids or tissue culture supernatant by affinity chromatography (protein A/G)
Conjugation:	Biotin
Storage:	Store at -20°C as received.
Stability:	Stable for 12 months from date of receipt.
Predicted Protein Size:	84.4 kDa
Gene Name:	B-Raf proto-oncogene, serine/threonine kinase
Database Link:	<a href="#">NP_004324</a> <a href="#">Entrez Gene 109880 Mouse</a> <a href="#">Entrez Gene 114486 Rat</a> <a href="#">Entrez Gene 673 Human</a> <a href="#">P15056</a>



[View online »](#)

**Background:**

This gene encodes a protein belonging to the raf/mil family of serine/threonine protein kinases. This protein plays a role in regulating the MAP kinase/ERKs signaling pathway, which affects cell division, differentiation, and secretion. Mutations in this gene are associated with cardiofaciocutaneous syndrome, a disease characterized by heart defects, mental retardation and a distinctive facial appearance. Mutations in this gene have also been associated with various cancers, including non-Hodgkin lymphoma, colorectal cancer, malignant melanoma, thyroid carcinoma, non-small cell lung carcinoma, and adenocarcinoma of lung. A pseudogene, which is located on chromosome X, has been identified for this gene. [provided by RefSeq]

**Synonyms:**

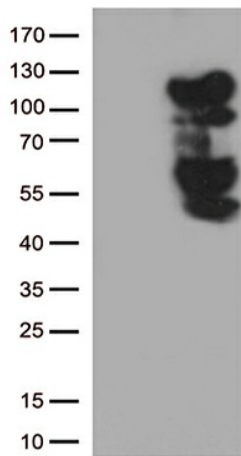
B-raf; B-RAF1; BRAF1; NS7; RAFB1

**Protein Families:**

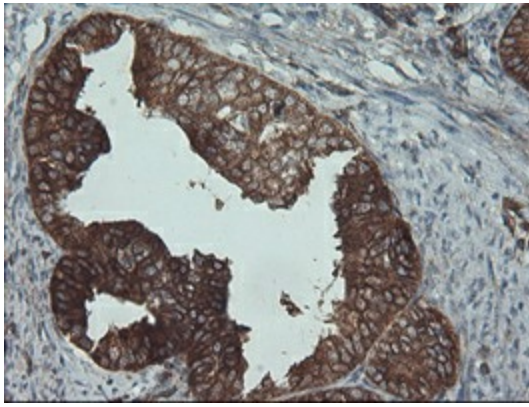
Druggable Genome, Protein Kinase

**Protein Pathways:**

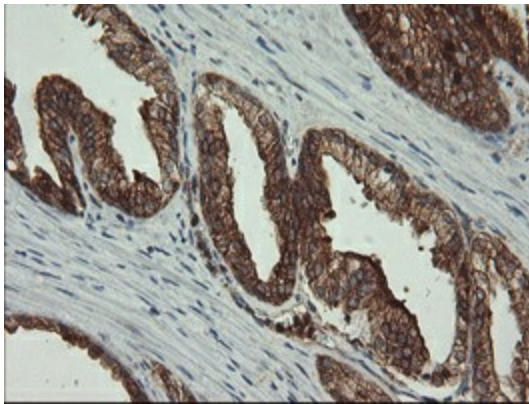
Acute myeloid leukemia, Bladder cancer, Chemokine signaling pathway, Chronic myeloid leukemia, Colorectal cancer, Endometrial cancer, ErbB signaling pathway, Focal adhesion, Glioma, Insulin signaling pathway, Long-term depression, Long-term potentiation, MAPK signaling pathway, Melanoma, mTOR signaling pathway, Natural killer cell mediated cytotoxicity, Neurotrophin signaling pathway, Non-small cell lung cancer, Pancreatic cancer, Pathways in cancer, Progesterone-mediated oocyte maturation, Prostate cancer, Regulation of actin cytoskeleton, Renal cell carcinoma, Thyroid cancer, Vascular smooth muscle contraction

**Product images:**

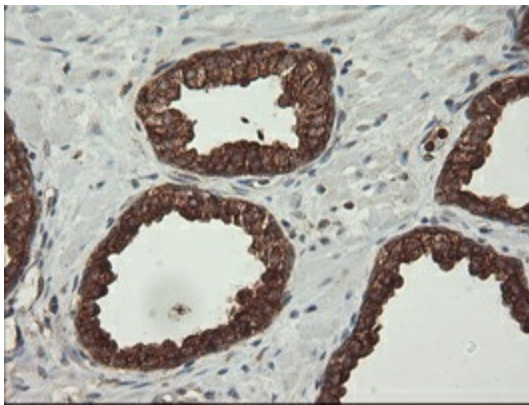
HEK293T cells were transfected with the pCMV6-ENTRY control (Left lane) or pCMV6-ENTRY BRAF ([RC211013], Right lane) cDNA for 48 hrs and lysed. Equivalent amounts of cell lysates (5 ug per lane) were separated by SDS-PAGE and immunoblotted with anti-BRAF (1:500).



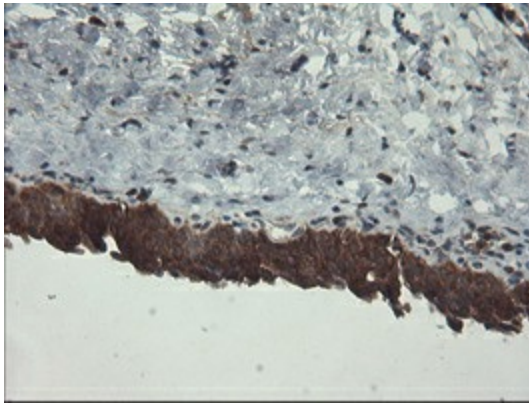
Immunohistochemical staining of paraffin-embedded Adenocarcinoma of Human endometrium tissue using anti-BRAF mouse monoclonal antibody. ([TA500447])



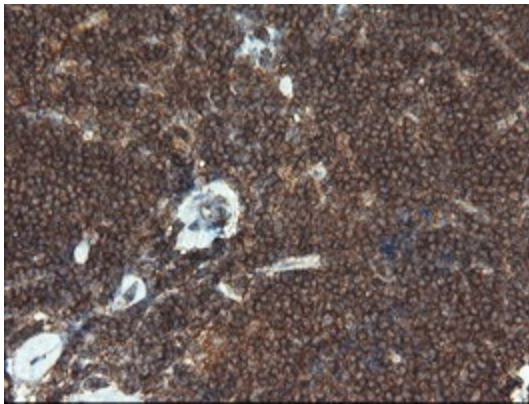
Immunohistochemical staining of paraffin-embedded Human prostate tissue within the normal limits using anti-BRAF mouse monoclonal antibody. ([TA500447])



Immunohistochemical staining of paraffin-embedded Carcinoma of Human prostate tissue using anti-BRAF mouse monoclonal antibody. ([TA500447])



Immunohistochemical staining of paraffin-embedded Human bladder tissue within the normal limits using anti-BRAF mouse monoclonal antibody. ([TA500447])



Immunohistochemical staining of paraffin-embedded Human lymphoma tissue using anti-BRAF mouse monoclonal antibody. ([TA500447])