

## Product datasheet for **TA500437BM**

### **MADM (NRBP1) Mouse Monoclonal Antibody (HRP conjugated) [Clone ID: OTI5C3]**

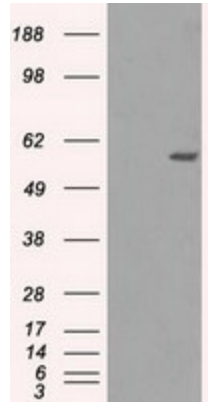
#### **Product data:**

Product Type:	Primary Antibodies
Clone Name:	OTI5C3
Applications:	FC, IF, IHC, IP, WB
Recommended Dilution:	WB 1:1000~2000, IHC 1:50, IF 1:100, FLOW 1:100, IP 2ug/500ul
Reactivity:	Human, Monkey, Mouse, Rat
Host:	Mouse
Isotype:	IgG2b
Clonality:	Monoclonal
Immunogen:	Full-length protein expressed in 293T cell transfected with human NRBP1 expression vector
Formulation:	PBS (pH 7.3) containing 1% BSA, 50% glycerol.
Concentration:	0.5 mg/ml
Purification:	Purified from mouse ascites fluids or tissue culture supernatant by affinity chromatography (protein A/G)
Conjugation:	HRP
Storage:	Store at -20°C as received.
Stability:	Stable for 12 months from date of receipt.
Predicted Protein Size:	59.8 kDa
Gene Name:	nuclear receptor binding protein 1
Database Link:	<a href="#">NP_037524</a> <a href="#">Entrez Gene 192292 Mouse</a> <a href="#">Entrez Gene 619579 Rat</a> <a href="#">Entrez Gene 700821 Monkey</a> <a href="#">Entrez Gene 29959 Human</a> <a href="#">Q9UHY1</a>
Background:	May play a role in subcellular trafficking between the endoplasmic reticulum and Golgi apparatus through interactions with the Rho-type GTPases. Binding to the NS3 protein of dengue virus type 2 appears to subvert this activity into the alteration of the
Synonyms:	BCON3; MADM; MUDPNP; NRBP
Protein Families:	Druggable Genome, Protein Kinase

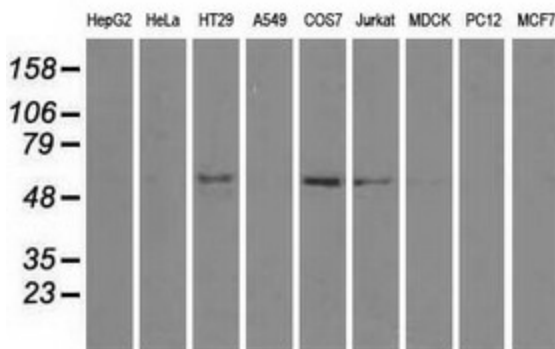


[View online »](#)

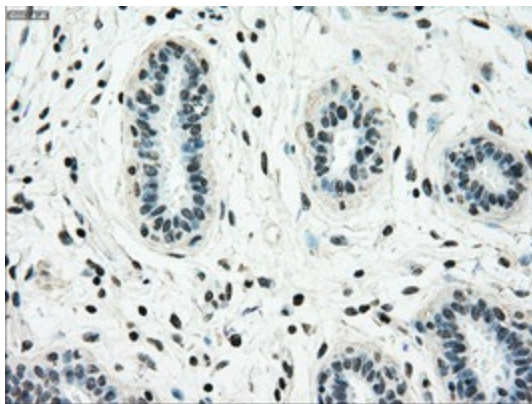
**Product images:**



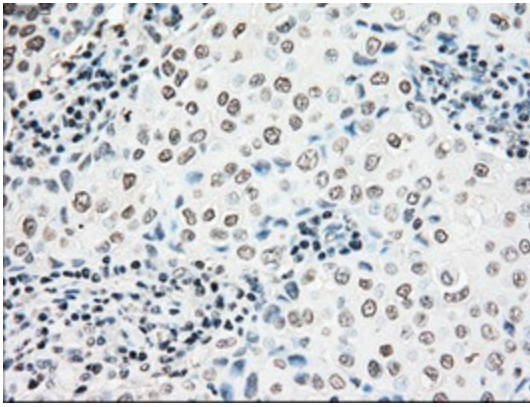
HEK293T cells were transfected with the pCMV6-ENTRY control (Cat# [PS100001], Left lane) or pCMV6-ENTRY NRBP1 (Cat# [RC200107], Right lane) cDNA for 48 hrs and lysed. Equivalent amounts of cell lysates (5 ug per lane) were separated by SDS-PAGE and immunoblotted with anti-NRBP1(Cat# [TA500437]). Positive lysates [LY415614] (100ug) and [LC415614] (20ug) can be purchased separately from OriGene.



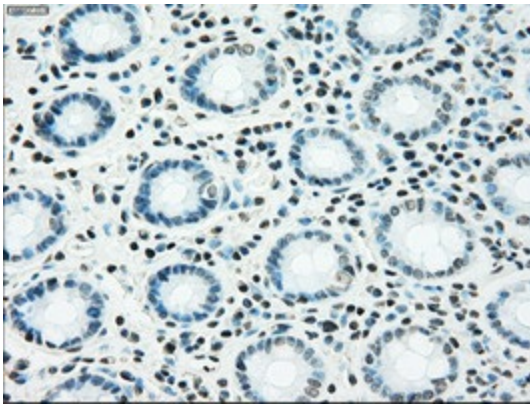
Western blot analysis of extracts (35ug) from 9 different cell lines by using anti-NRBP1 monoclonal antibody.



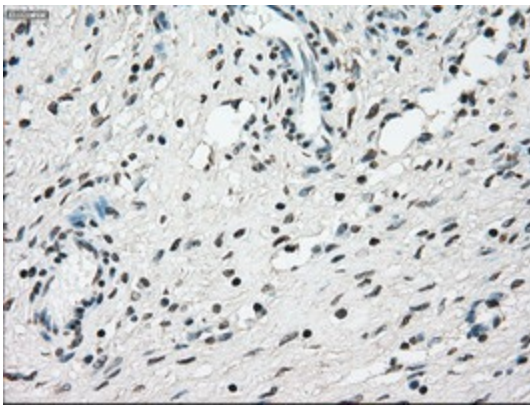
Immunohistochemical staining of paraffin-embedded Human breast tissue within the normal limits using anti-NRBP1 mouse monoclonal antibody. (Heat-induced epitope retrieval by 10mM citric buffer, pH6.0, 100°C for 10min, [TA500437])



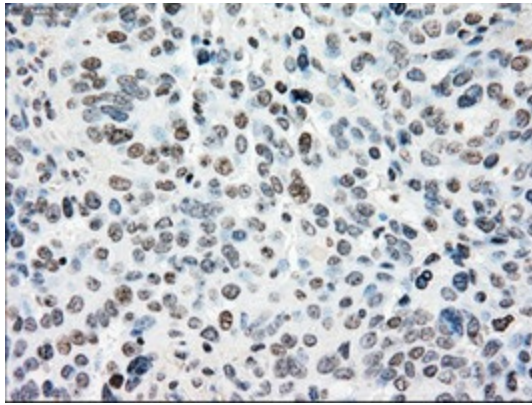
Immunohistochemical staining of paraffin-embedded Adenocarcinoma of Human breast tissue using anti-NRBP1 mouse monoclonal antibody. (Heat-induced epitope retrieval by 10mM citric buffer, pH6.0, 100°C for 10min, [TA500437])



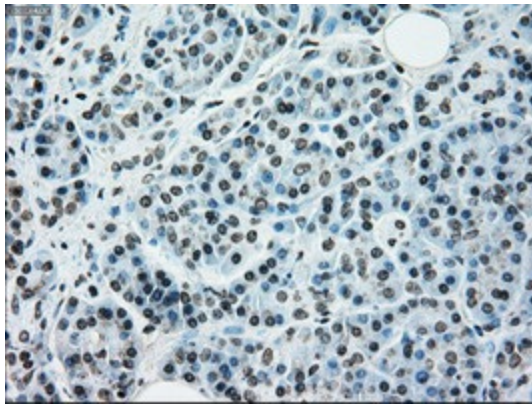
Immunohistochemical staining of paraffin-embedded Human colon tissue within the normal limits using anti-NRBP1 mouse monoclonal antibody. (Heat-induced epitope retrieval by 10mM citric buffer, pH6.0, 100°C for 10min, [TA500437])



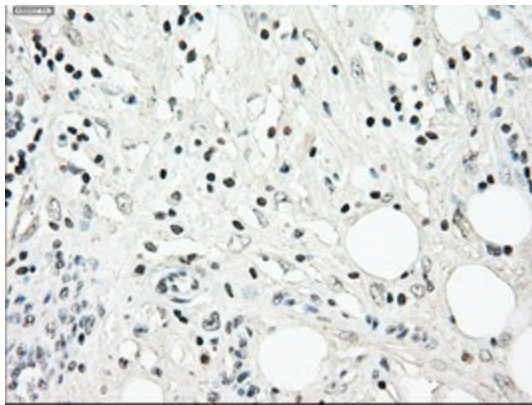
Immunohistochemical staining of paraffin-embedded Human Ovary tissue within the normal limits using anti-NRBP1 mouse monoclonal antibody. (Heat-induced epitope retrieval by 10mM citric buffer, pH6.0, 100°C for 10min, [TA500437])



Immunohistochemical staining of paraffin-embedded Adenocarcinoma of Human ovary tissue using anti-NRBP1 mouse monoclonal antibody. (Heat-induced epitope retrieval by 10mM citric buffer, pH6.0, 100°C for 10min, [TA500437])

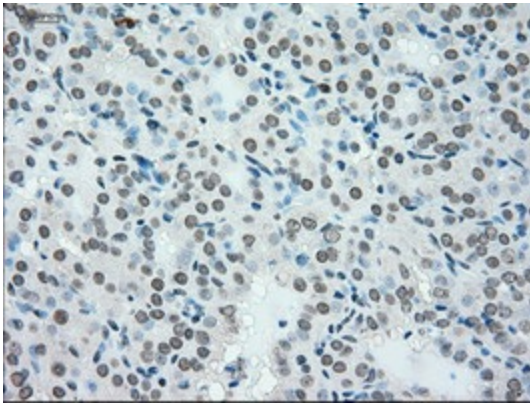


Immunohistochemical staining of paraffin-embedded Human pancreas tissue within the normal limits using anti-NRBP1 mouse monoclonal antibody. (Heat-induced epitope retrieval by 10mM citric buffer, pH6.0, 100°C for 10min, [TA500437])

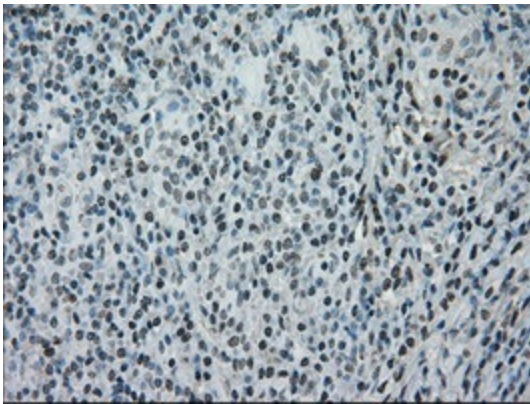


Immunohistochemical staining of paraffin-embedded Carcinoma of Human pancreas tissue using anti-NRBP1 mouse monoclonal antibody. (Heat-induced epitope retrieval by 10mM citric buffer, pH6.0, 100°C for 10min, [TA500437])

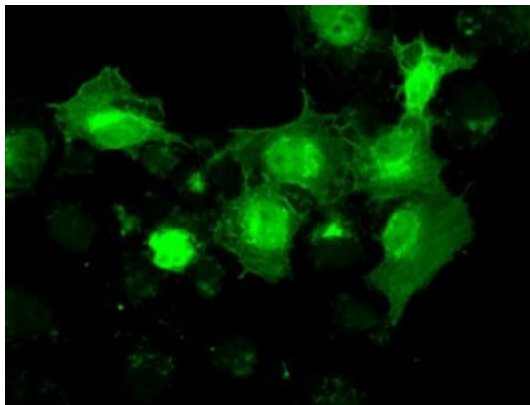




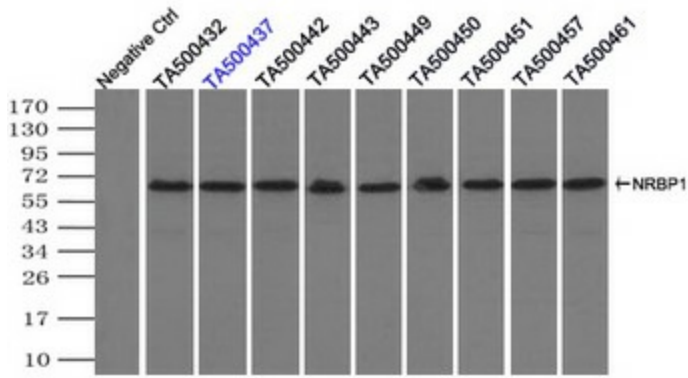
Immunohistochemical staining of paraffin-embedded Carcinoma of Human thyroid tissue using anti-NRBP1 mouse monoclonal antibody. (Heat-induced epitope retrieval by 10mM citric buffer, pH6.0, 100°C for 10min, [TA500437])



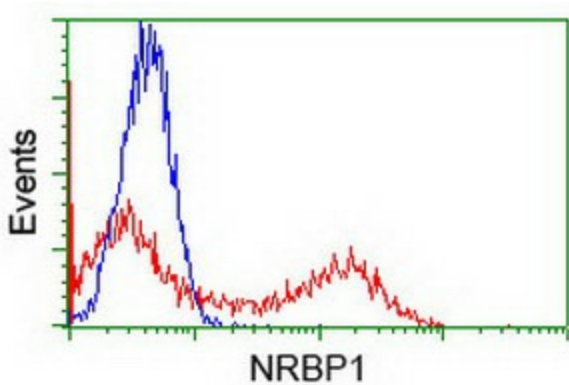
Immunohistochemical staining of paraffin-embedded Human lymphoma tissue using anti-NRBP1 mouse monoclonal antibody. (Heat-induced epitope retrieval by 10mM citric buffer, pH6.0, 100°C for 10min, [TA500437])



Anti-NRBP1 mouse monoclonal antibody ([TA500437]) immunofluorescent staining of COS7 cells transiently transfected by pCMV6-ENTRY NRBP1 ([RC200107]).



Immunoprecipitation (IP) of NRBP1 by using TrueMab monoclonal anti-NRBP1 antibodies (Negative control: IP without adding anti-NRBP1 antibody.). For each experiment, 500ul of DDK tagged NRBP1 overexpression lysates (at 1:5 dilution with HEK293T lysate), 2ug of anti-NRBP1 antibody and 20ul (0.1mg) of goat anti-mouse conjugated magnetic beads were mixed and incubated overnight. After extensive wash to remove any non-specific binding, the immunoprecipitated products were analyzed with rabbit anti-DDK polyclonal antibody.



HEK293T cells transfected with either [RC200107] overexpress plasmid (Red) or empty vector control plasmid (Blue) were immunostained by anti-NRBP1 antibody ([TA500437]), and then analyzed by flow cytometry.