

## Product datasheet for **TA500433AM**

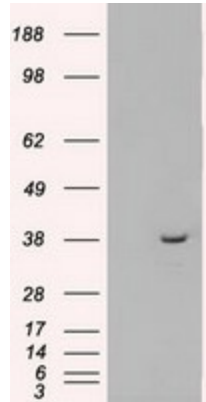
### **MRI1 Mouse Monoclonal Antibody (Biotin conjugated) [Clone ID: OTI6G9]**

#### **Product data:**

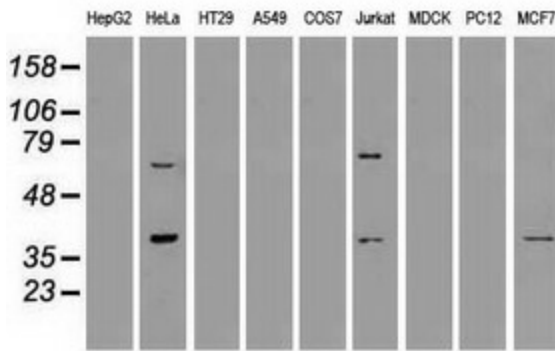
<b>Product Type:</b>	Primary Antibodies
<b>Clone Name:</b>	OTI6G9
<b>Applications:</b>	IF, IHC, WB
<b>Recommended Dilution:</b>	WB 1:1000~2000, IHC 1:50, IF 1:100
<b>Reactivity:</b>	Human, Mouse, Rat
<b>Host:</b>	Mouse
<b>Isotype:</b>	IgG1
<b>Clonality:</b>	Monoclonal
<b>Immunogen:</b>	Full length human recombinant protein of human MRI1 (NP_115661) produced in HEK293T cell.
<b>Formulation:</b>	PBS (pH 7.3) containing 1% BSA, 50% glycerol and 0.02% sodium azide.
<b>Concentration:</b>	0.5 mg/ml
<b>Purification:</b>	Purified from mouse ascites fluids or tissue culture supernatant by affinity chromatography (protein A/G)
<b>Conjugation:</b>	Biotin
<b>Storage:</b>	Store at -20°C as received.
<b>Stability:</b>	Stable for 12 months from date of receipt.
<b>Predicted Protein Size:</b>	39.1 kDa
<b>Gene Name:</b>	methylthioribose-1-phosphate isomerase 1
<b>Database Link:</b>	<a href="#">NP_001026897</a> <a href="#">Entrez Gene 84245 Human</a> <a href="#">Q9BV20</a>
<b>Background:</b>	Catalyzes the interconversion of methylthioribose-1-phosphate (MTR-1-P) into methylthioribulose-1-phosphate (MTRu-1-P) (By similarity).
<b>Synonyms:</b>	MRDI; MTNA; Ypr118w



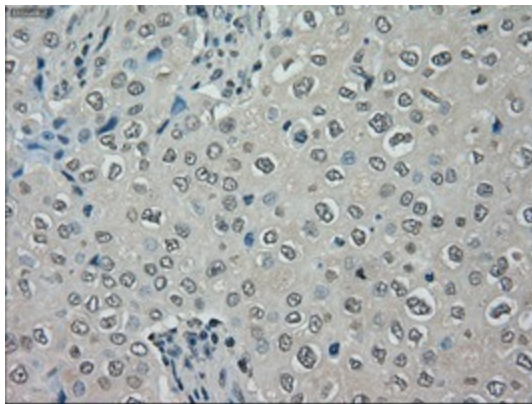
[View online »](#)

**Product images:**


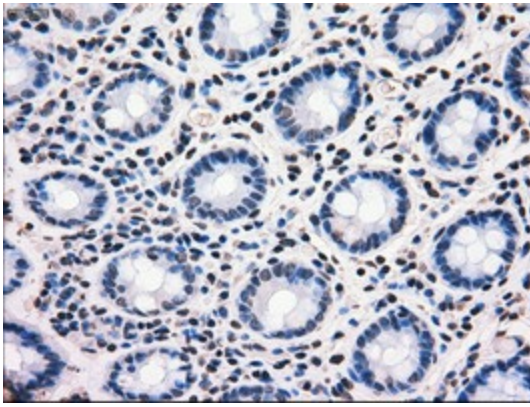
HEK293T cells were transfected with the pCMV6-ENTRY control (Cat# [PS100001], Left lane) or pCMV6-ENTRY MRI1 (Cat# [RC200993], Right lane) cDNA for 48 hrs and lysed. Equivalent amounts of cell lysates (5 ug per lane) were separated by SDS-PAGE and immunoblotted with anti-MRI1 (Cat# [TA500433]). Positive lysates [LY422176] (100ug) and [LC422176] (20ug) can be purchased separately from OriGene.



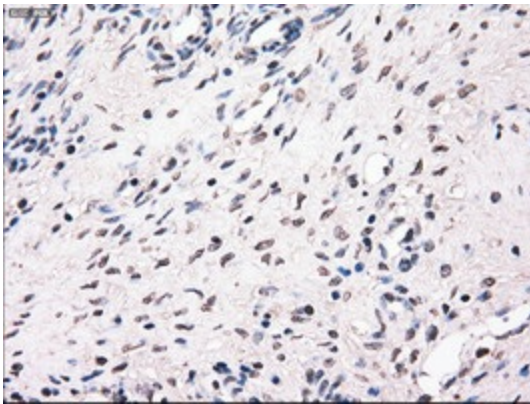
Western blot analysis of extracts (35ug) from 9 different cell lines by using anti-MRI1 monoclonal antibody.



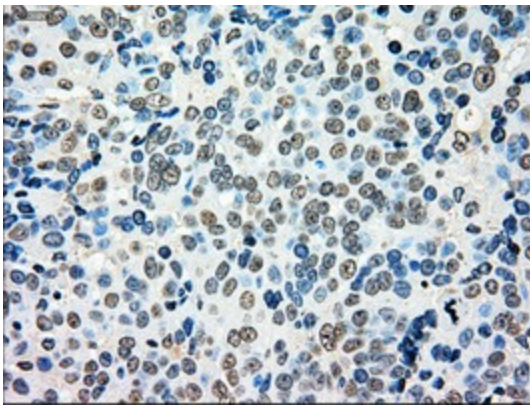
Immunohistochemical staining of paraffin-embedded Adenocarcinoma of Human breast tissue using anti-MRI1 mouse monoclonal antibody. (Heat-induced epitope retrieval by 10mM citric buffer, pH6.0, 100°C for 10min, [TA500433])



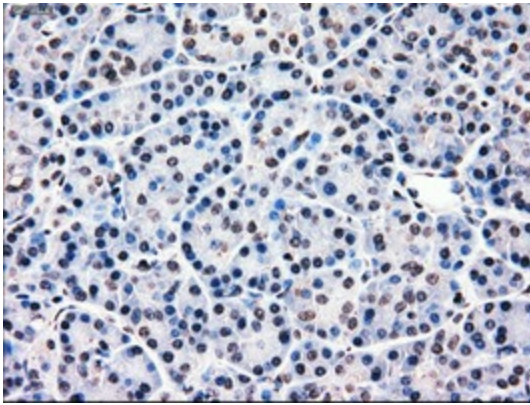
Immunohistochemical staining of paraffin-embedded Human colon tissue within the normal limits using anti-MRI1 mouse monoclonal antibody. (Heat-induced epitope retrieval by 10mM citric buffer, pH6.0, 100°C for 10min, [TA500433])



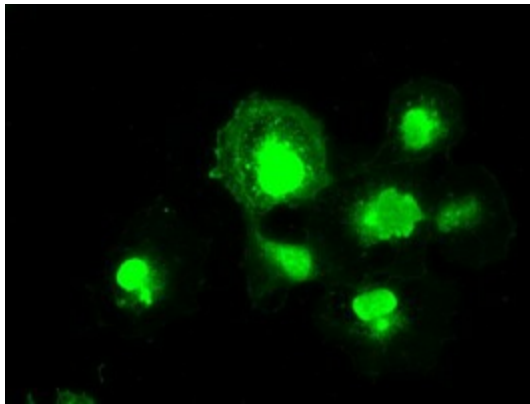
Immunohistochemical staining of paraffin-embedded Human Ovary tissue within the normal limits using anti-MRI1 mouse monoclonal antibody. (Heat-induced epitope retrieval by 10mM citric buffer, pH6.0, 100°C for 10min, [TA500433])



Immunohistochemical staining of paraffin-embedded Adenocarcinoma of Human ovary tissue using anti-MRI1 mouse monoclonal antibody. (Heat-induced epitope retrieval by 10mM citric buffer, pH6.0, 100°C for 10min, [TA500433])



Immunohistochemical staining of paraffin-embedded Human pancreas tissue within the normal limits using anti-MRI1 mouse monoclonal antibody. (Heat-induced epitope retrieval by 10mM citric buffer, pH6.0, 100°C for 10min, [TA500433])



Anti-MRI1 mouse monoclonal antibody ([TA500433]) immunofluorescent staining of COS7 cells transiently transfected by pCMV6-ENTRY MRI1 ([RC200993]).