

Product datasheet for **TA500425S**

Melanoma gp100 (PMEL) Mouse Monoclonal Antibody [Clone ID: OTI7E3]

Product data:

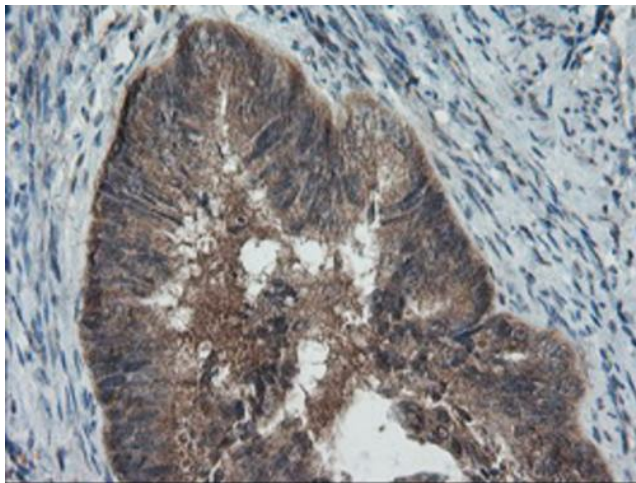
Product Type:	Primary Antibodies
Clone Name:	OTI7E3
Applications:	FC, IHC
Recommended Dilution:	FLOW 1:100, IHC: 1:150
Reactivity:	Human
Host:	Mouse
Isotype:	IgG2b
Clonality:	Monoclonal
Immunogen:	Full length human recombinant protein of human SILV (NP_008859) produced in HEK293T cell.
Formulation:	PBS (pH 7.3) containing 1% BSA, 50% glycerol and 0.02% sodium azide.
Concentration:	1 mg/ml
Purification:	Purified from mouse ascites fluids or tissue culture supernatant by affinity chromatography (protein A/G)
Conjugation:	Unconjugated
Storage:	Store at -20°C as received.
Stability:	Stable for 12 months from date of receipt.
Predicted Protein Size:	70.3 kDa
Gene Name:	premelanosome protein
Database Link:	NP_008859 Entrez Gene 6490 Human P40967
Background:	Could be a melanogenic enzyme. Could represent an oncofetal self-antigen that is normally expressed at low levels in quiescent adult melanocytes but overexpressed by proliferating neonatal melanocytes and during tumor growth. Release of the soluble form, ME20-S, could protect tumor cells from antibody mediated immunity.
Synonyms:	D12S53E; gp100; ME20; ME20-M; ME20M; P1; P100; PMEL17; SI; SIL; SILV



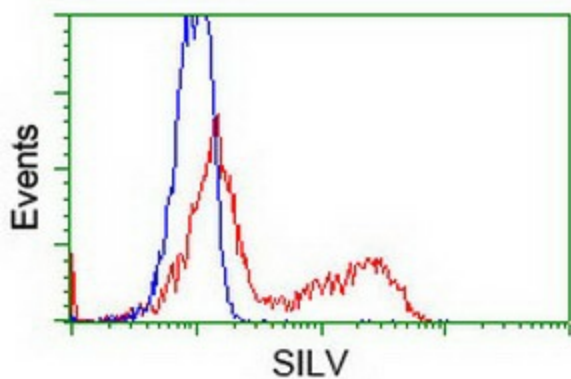
[View online »](#)

Protein Families: Secreted Protein, Transmembrane

Product images:



Immunohistochemical staining of paraffin-embedded Adenocarcinoma of Human endometrium tissue using anti-SILV mouse monoclonal antibody. ([TA500425]). Heat-induced epitope retrieval by EDTA solution buffer pH 8.0 at 120°C for 3 min.



HEK293T cells transfected with either [RC200663] overexpress plasmid (Red) or empty vector control plasmid (Blue) were immunostained by anti-SILV antibody ([TA500425]), and then analyzed by flow cytometry.