

## Product datasheet for **TA500423BM**

### Melanoma gp100 (PMEL) Mouse Monoclonal Antibody (HRP conjugated) [Clone ID: OTI7B2]

#### Product data:

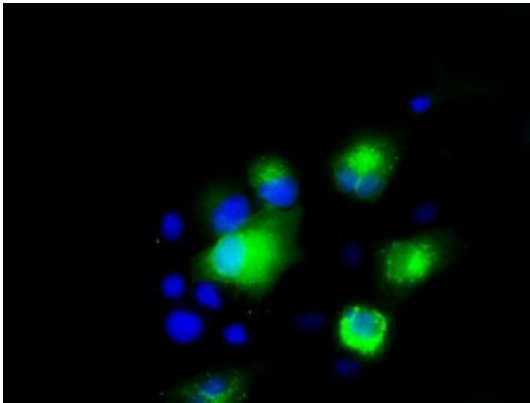
|                         |   |
|-------------------------|---|
| Product Type:           | Primary Antibodies  |
| Clone Name:             | OTI7B2  |
| Applications:           | FC, IF  |
| Recommended Dilution:   | IF 1:100, Flow 1:100  |
| Reactivity:             | Human   |
| Host:                   | Mouse   |
| Isotype:                | IgG1  |
| Clonality:              | Monoclonal  |
| Immunogen:              | Full length human recombinant protein of human SILV (NP_008859) produced in HEK293T cell.   |
| Formulation:            | PBS (pH 7.3) containing 1% BSA, 50% glycerol.   |
| Concentration:          | 0.5 mg/ml   |
| Purification:           | Purified from mouse ascites fluids or tissue culture supernatant by affinity chromatography (protein A/G)   |
| Conjugation:            | HRP   |
| Storage:                | Store at -20°C as received.   |
| Stability:              | Stable for 12 months from date of receipt.  |
| Predicted Protein Size: | 70.3 kDa  |
| Gene Name:              | premelanosome protein   |
| Database Link:          | <a href="#">NP_008859</a><br><a href="#">Entrez Gene 6490 Human P40967</a>  |
| Background:             | Could be a melanogenic enzyme. Could represent an oncofetal self-antigen that is normally expressed at low levels in quiescent adult melanocytes but overexpressed by proliferating neonatal melanocytes and during tumor growth. Release of the soluble form, ME20-S, could protect tumor cells from antibody mediated immunity. |
| Synonyms:               | D12S53E; gp100; ME20; ME20-M; ME20M; P1; P100; PMEL17; SI; SIL; SILV  |



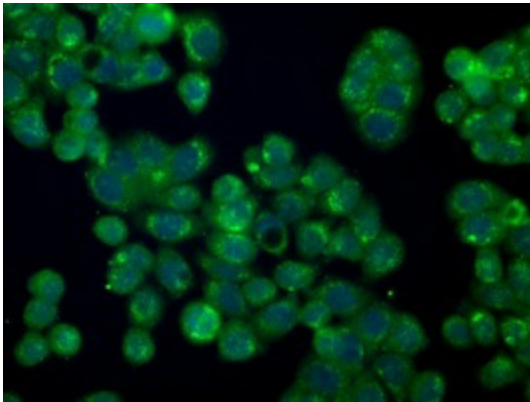
[View online »](#)

Protein Families: Secreted Protein, Transmembrane

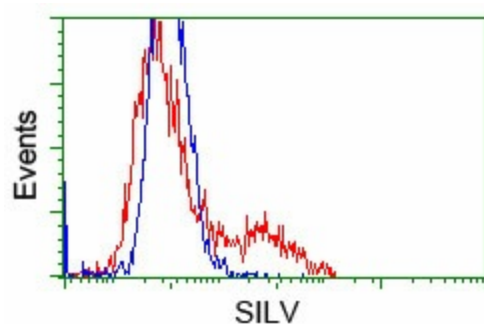
### Product images:



Anti-SILV mouse monoclonal antibody ([TA500423]) immunofluorescent staining of COS7 cells transiently transfected by pCMV6-ENTRY SILV ([RC200663]).



Immunofluorescent staining of HT29 cells using anti-SILV mouse monoclonal antibody ([TA500423]).



HEK293T cells transfected with either pCMV6-ENTRY SILV ([RC200663]) (Red) or empty vector control plasmid (Blue) were immunostained with anti-SILV mouse monoclonal ([TA500423], Dilution 1:1,000), and then analyzed by flow cytometry.