

Product datasheet for **TA500421**

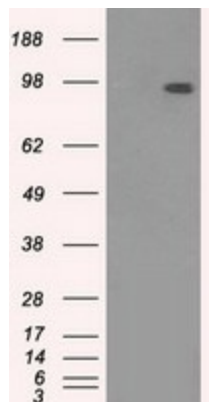
TYRO3 Mouse Monoclonal Antibody [Clone ID: OTI9B12]

Product data:

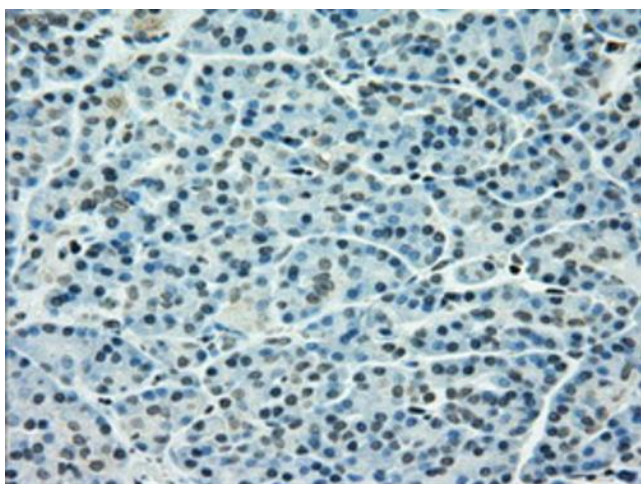
Product Type:	Primary Antibodies
Clone Name:	OTI9B12
Applications:	FC, IF, IHC, IP, WB
Recommended Dilution:	WB 1:2000, IHC 1:150, IF 1:100, FLOW 1:100, IP 2ug/500ul
Reactivity:	Human, Mouse, Rat
Host:	Mouse
Isotype:	IgG1
Clonality:	Monoclonal
Immunogen:	Full length human recombinant protein of human TYRO3 (NP_006284) produced in HEK293T cell.
Formulation:	PBS (pH 7.3) containing 1% BSA, 50% glycerol and 0.02% sodium azide.
Concentration:	1 mg/ml
Purification:	Purified from mouse ascites fluids or tissue culture supernatant by affinity chromatography (protein A/G)
Conjugation:	Unconjugated
Storage:	Store at -20°C as received.
Stability:	Stable for 12 months from date of receipt.
Predicted Protein Size:	96.9 kDa
Gene Name:	TYRO3 protein tyrosine kinase
Database Link:	NP_006284 Entrez Gene 22174 Mouse Entrez Gene 25232 Rat Entrez Gene 7301 Human Q06418
Background:	May be involved in cell adhesion processes, particularly in the central nervous system. In case of filovirus infection, seems to function as a cell entry factor.
Synonyms:	BYK; Dtk; Etk-2; Rek; RSE; Sky; Tif
Protein Families:	Druggable Genome, Protein Kinase



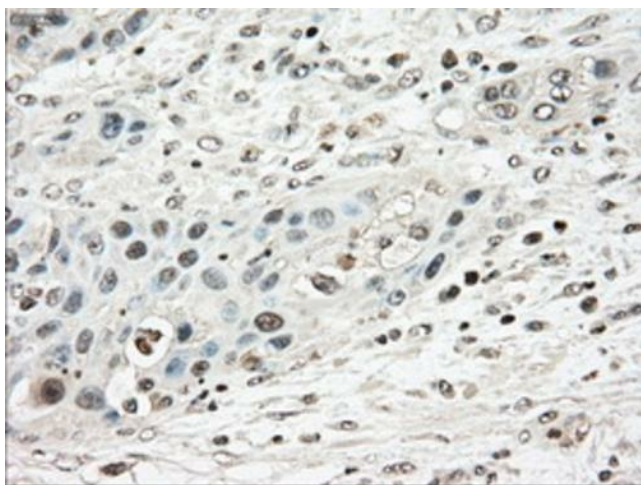
[View online »](#)

Product images:

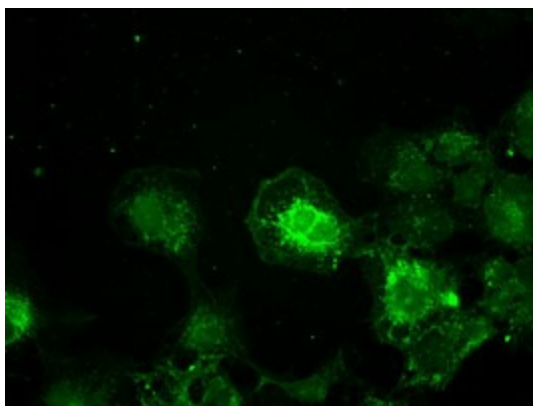
HEK293T cells were transfected with the pCMV6-ENTRY control (Left lane) or pCMV6-ENTRY TYRO3 ([RC208260], Right lane) cDNA for 48 hrs and lysed. Equivalent amounts of cell lysates (5 ug per lane) were separated by SDS-PAGE and immunoblotted with anti-TYRO3. Positive lysates [LY401899] (100ug) and [LC401899] (20ug) can be purchased separately from OriGene.



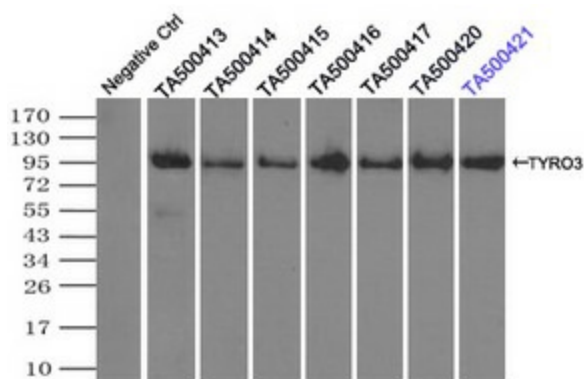
Immunohistochemical staining of paraffin-embedded Human pancreas tissue within the normal limits using anti-TYRO3 mouse monoclonal antibody. Heat-induced epitope retrieval by EDTA solution buffer pH 8.0 at 120°C for 3 min.



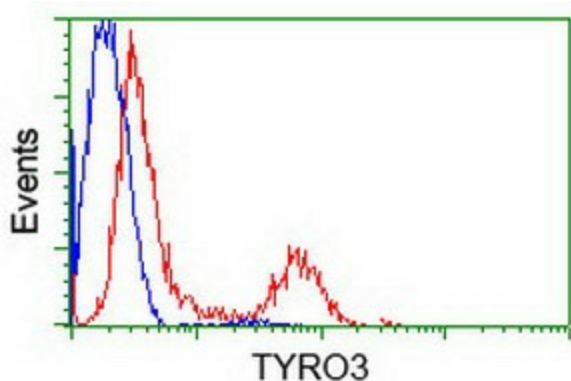
Immunohistochemical staining of paraffin-embedded Carcinoma of Human pancreas tissue using anti-TYRO3 mouse monoclonal antibody. Heat-induced epitope retrieval by EDTA solution buffer pH 8.0 at 120°C for 3 min.



Anti-TYRO3 mouse monoclonal antibody (TA500421) immunofluorescent staining of COS7 cells transiently transfected by pCMV6-ENTRY TYRO3 ([RC208260]).



Immunoprecipitation (IP) of TYRO3 by using TrueMab monoclonal anti-TYRO3 antibodies (Negative control: IP without adding anti-TYRO3 antibody.). For each experiment, 500ul of DDK tagged TYRO3 overexpression lysates (at 1:5 dilution with HEK293T lysate), 2ug of anti-TYRO3 antibody and 20ul (0.1mg) of goat anti-mouse conjugated magnetic beads were mixed and incubated overnight. After extensive wash to remove any non-specific binding, the immunoprecipitated products were analyzed with rabbit anti-DDK polyclonal antibody.



HEK293T cells transfected with either [RC208260] overexpress plasmid (Red) or empty vector control plasmid (Blue) were immunostained by anti-TYRO3 antibody (TA500421), and then analyzed by flow cytometry.