

Product datasheet for **TA500408S**

STK3 Mouse Monoclonal Antibody [Clone ID: OTI4G10]

Product data:

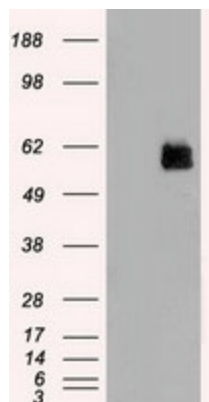
Product Type:	Primary Antibodies
Clone Name:	OTI4G10
Applications:	IHC, WB
Recommended Dilution:	WB 1:2000; IHC 1:50
Reactivity:	Human, Monkey, Dog, Mouse, Rat
Host:	Mouse
Isotype:	IgG2b
Clonality:	Monoclonal
Immunogen:	Full-length protein expressed in 293T cell transfected with human STK3 expression vector
Formulation:	PBS (pH 7.3) containing 1% BSA, 50% glycerol and 0.02% sodium azide.
Concentration:	1 mg/ml
Purification:	Purified from mouse ascites fluids or tissue culture supernatant by affinity chromatography (protein A/G)
Conjugation:	Unconjugated
Storage:	Store at -20°C as received.
Stability:	Stable for 12 months from date of receipt.
Predicted Protein Size:	56.3 kDa
Gene Name:	serine/threonine kinase 3
Database Link:	NP_006272 Entrez Gene 56274 Mouse Entrez Gene 65189 Rat Entrez Gene 475045 Dog Entrez Gene 707425 Monkey Entrez Gene 6788 Human Q13188
Background:	Protein kinase activation is a frequent response of cells to treatment with growth factors, chemicals, heat shock, or apoptosis-inducing agents. This protein kinase activation presumably allows cells to resist unfavorable environmental conditions. The yeast 'sterile 20'(Ste20) kinase acts upstream of the mitogen-activated protein kinase (MAPK) cascade that is activated under a variety of stress conditions. MST2 was identified as a kinase that is activated by the proapoptotic agents staurosporine and FAS ligand



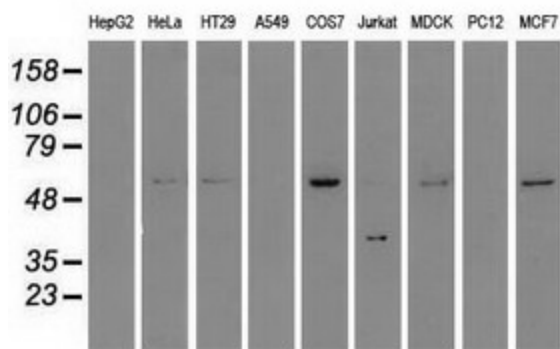
[View online »](#)

Synonyms: KRS1; MST2
Protein Families: Druggable Genome, Protein Kinase
Protein Pathways: MAPK signaling pathway

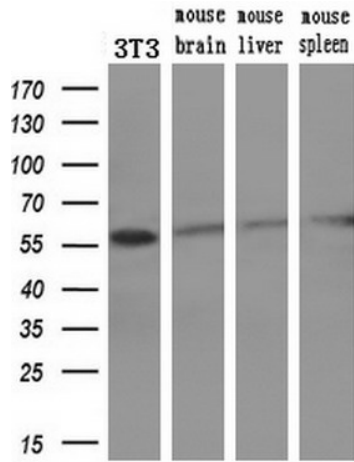
Product images:



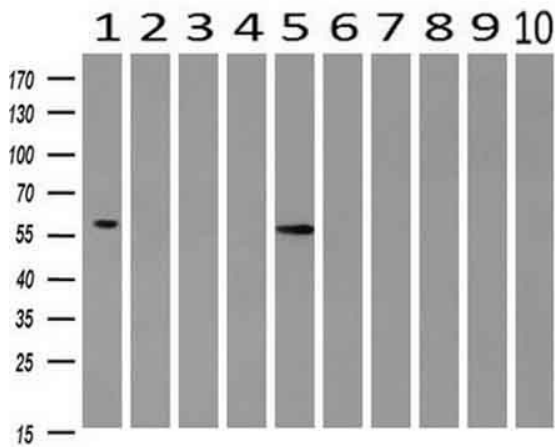
HEK293T cells were transfected with the pCMV6-ENTRY control (Cat# [PS100001], Left lane) or pCMV6-ENTRY STK3 (Cat# [RC203897], Right lane) cDNA for 48 hrs and lysed. Equivalent amounts of cell lysates (5 ug per lane) were separated by SDS-PAGE and immunoblotted with anti-STK3 (Cat# [TA500408]). Positive lysates [LY401892] (100ug) and [LC401892] (20ug) can be purchased separately from OriGene.



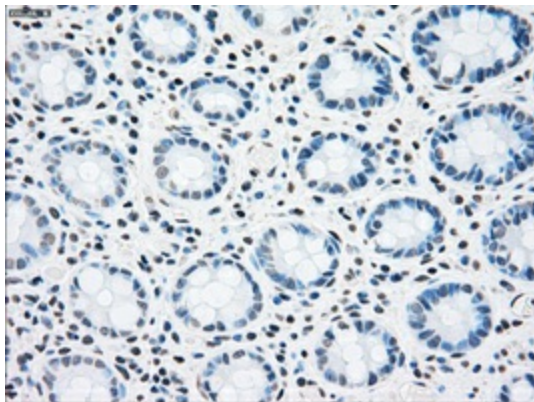
Western blot analysis of extracts (35ug) from 9 different cell lines by using anti-STK3 monoclonal antibody.



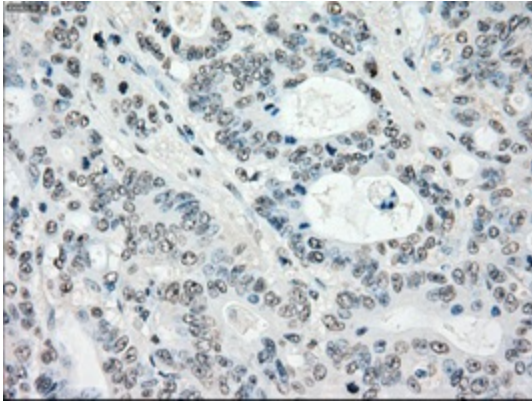
Western blot analysis of extracts (10ug) from a mouse cell line and 3 different mouse tissues by using anti-STK3 monoclonal antibody (1:200).



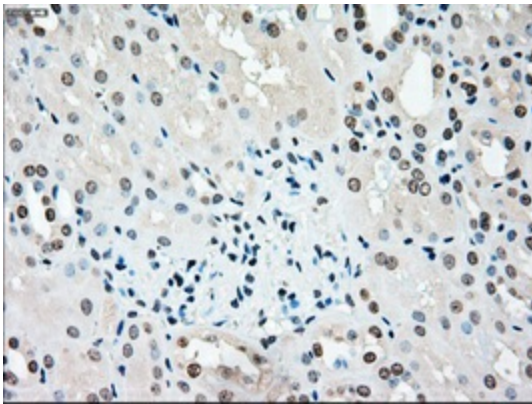
Western blot analysis of extracts (10ug) from 10 Human tissue by using anti-STK3 monoclonal antibody at 1:200 (1: Testis; 2: Omentum; 3: Uterus; 4: Breast; 5: Brain; 6: Liver; 7: Ovary; 8: Thyroid gland; 9: colon; 10: spleen).



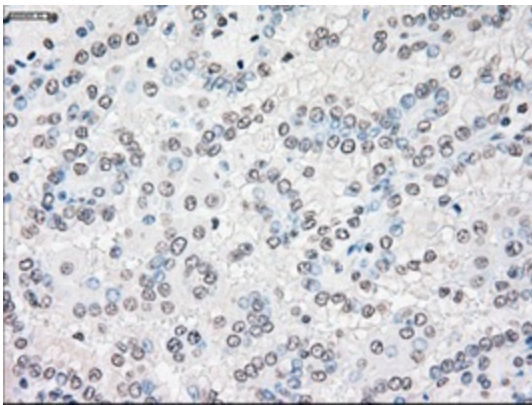
Immunohistochemical staining of paraffin-embedded colon tissue within the normal limits using anti-STK3mouse monoclonal antibody. (Heat-induced epitope retrieval by 10mM citric buffer, pH6.0, 100°C for 10min, [TA500408], Dilution 1:50)



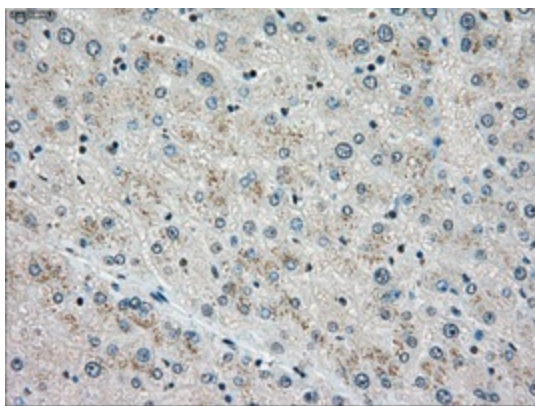
Immunohistochemical staining of paraffin-embedded Adenocarcinoma of colon tissue using anti-STK3 mouse monoclonal antibody. (Heat-induced epitope retrieval by 10mM citric buffer, pH6.0, 100°C for 10min, [TA500408], Dilution 1:50)



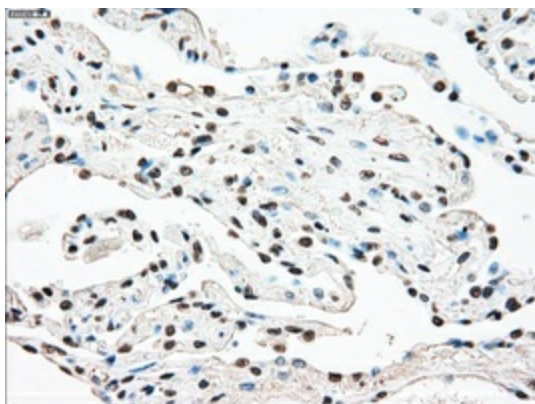
Immunohistochemical staining of paraffin-embedded Kidney tissue within the normal limits using anti-STK3 mouse monoclonal antibody. (Heat-induced epitope retrieval by 10mM citric buffer, pH6.0, 100°C for 10min, [TA500408], Dilution 1:50)



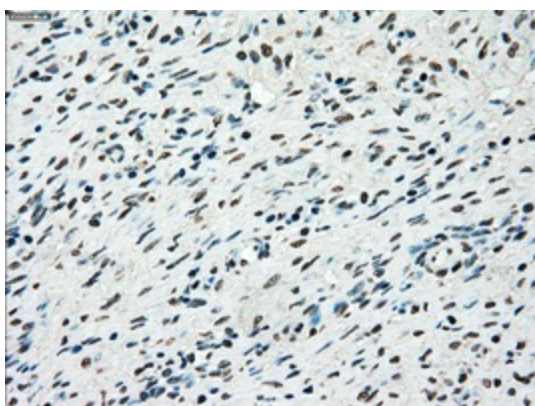
Immunohistochemical staining of paraffin-embedded Carcinoma of kidney tissue using anti-STK3 mouse monoclonal antibody. (Heat-induced epitope retrieval by 10mM citric buffer, pH6.0, 100°C for 10min, [TA500408], Dilution 1:50)



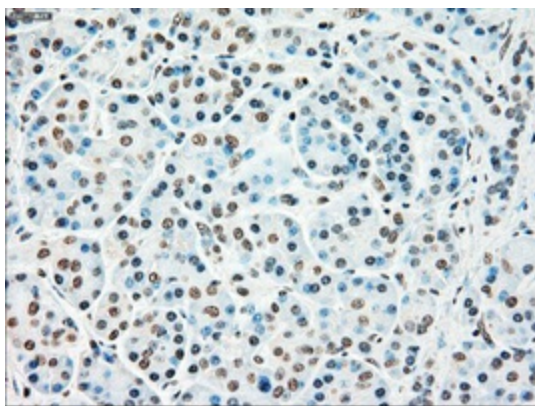
Immunohistochemical staining of paraffin-embedded liver tissue within the normal limits using anti-STK3mouse monoclonal antibody. (Heat-induced epitope retrieval by 10mM citric buffer, pH6.0, 100°C for 10min, [TA500408], Dilution 1:50)



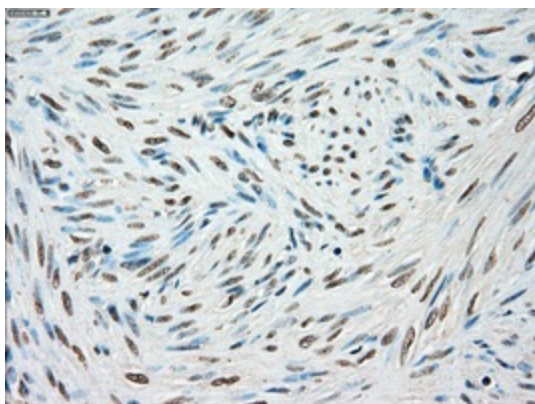
Immunohistochemical staining of paraffin-embedded lung tissue within the normal limits using anti-STK3mouse monoclonal antibody. (Heat-induced epitope retrieval by 10mM citric buffer, pH6.0, 100°C for 10min, [TA500408], Dilution 1:50)



Immunohistochemical staining of paraffin-embedded Ovary tissue within the normal limits using anti-STK3mouse monoclonal antibody. (Heat-induced epitope retrieval by 10mM citric buffer, pH6.0, 100°C for 10min, [TA500408], Dilution 1:50)



Immunohistochemical staining of paraffin-embedded pancreas tissue within the normal limits using anti-STK3 mouse monoclonal antibody. (Heat-induced epitope retrieval by 10mM citric buffer, pH6.0, 100°C for 10min, [TA500408], Dilution 1:50)



Immunohistochemical staining of paraffin-embedded endometrium tissue within the normal limits using anti-STK3 mouse monoclonal antibody. (Heat-induced epitope retrieval by 10mM citric buffer, pH6.0, 100°C for 10min, [TA500408], Dilution 1:50)