

## Product datasheet for **TA500406S**

### SSB Mouse Monoclonal Antibody [Clone ID: OTI1E11]

#### Product data:

Product Type:	Primary Antibodies
Clone Name:	OTI1E11
Applications:	FC, IF, IP, WB
Recommended Dilution:	WB 1:1000~2000, IF 1:50~100, FLOW 1:100, IP 2ug/500ul
Reactivity:	Human, Dog, Rat, Monkey, Mouse
Host:	Mouse
Isotype:	IgG2a
Clonality:	Monoclonal
Immunogen:	Full-length protein expressed in 293T cell transfected with human SSB expression vector
Formulation:	PBS (pH 7.3) containing 1% BSA, 50% glycerol and 0.02% sodium azide.
Concentration:	2.8 mg/ml
Purification:	Purified from mouse ascites fluids or tissue culture supernatant by affinity chromatography (protein A/G)
Conjugation:	Unconjugated
Storage:	Store at -20°C as received.
Stability:	Stable for 12 months from date of receipt.
Predicted Protein Size:	46.8 kDa
Gene Name:	small RNA binding exonuclease protection factor La
Database Link:	<a href="#">NP_003133</a> <a href="#">Entrez Gene 20823 Mouse</a> <a href="#">Entrez Gene 81783 Rat</a> <a href="#">Entrez Gene 478787 Dog</a> <a href="#">Entrez Gene 710344 Monkey</a> <a href="#">Entrez Gene 6741 Human</a> <a href="#">P05455</a>
Background:	La is involved in diverse aspects of RNA metabolism, including binding and protecting 3-prime UUU(H) elements of newly RNA polymerase III (see MIM 606007)-transcribed RNA, processing 5-prime and 3-prime ends of pre-tRNA precursors, acting as an RNA chaperone, and binding viral RNAs associated with hepatitis C virus. La protein was originally defined by its reactivity with autoantibodies from patients with Sjogren syndrome (MIM 270150) and systemic lupus erythematosus



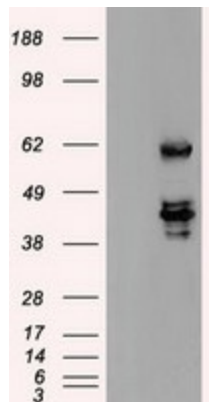
[View online »](#)

**Synonyms:** La; La/SSB; LARP3

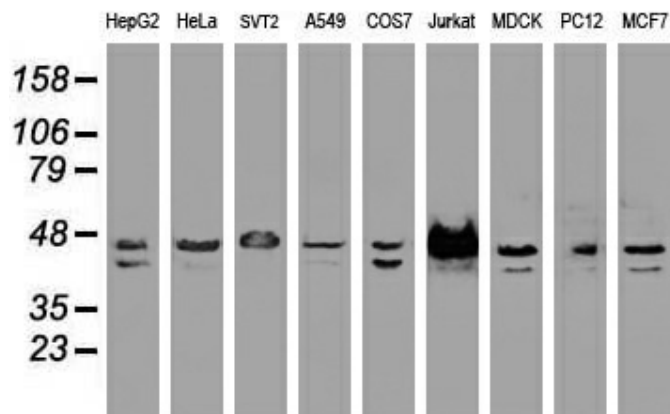
**Protein Families:** Stem cell - Pluripotency, Transcription Factors

**Protein Pathways:** Systemic lupus erythematosus

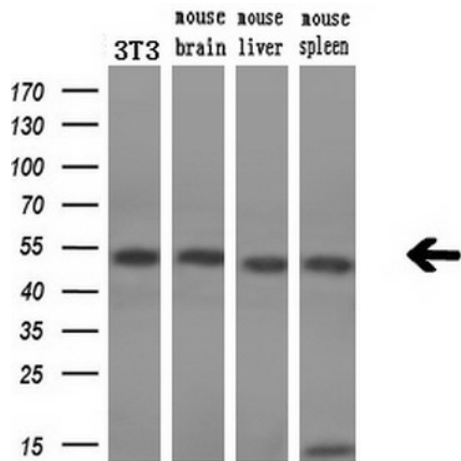
**Product images:**



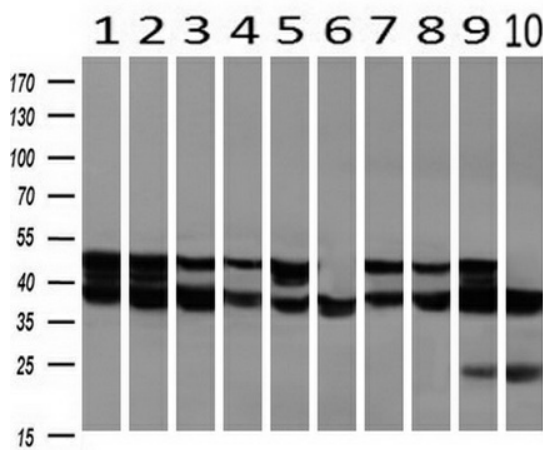
HEK293T cells were transfected with the pCMV6-ENTRY control (Cat# [PS100001], Left lane) or pCMV6-ENTRY SSB (Cat# [RC205013], Right lane) cDNA for 48 hrs and lysed. Equivalent amounts of cell lysates (5 ug per lane) were separated by SDS-PAGE and immunoblotted with anti-SSB(Cat# [TA500406]). Positive lysates [LY401091] (100ug) and [LC401091] (20ug) can be purchased separately from OriGene.



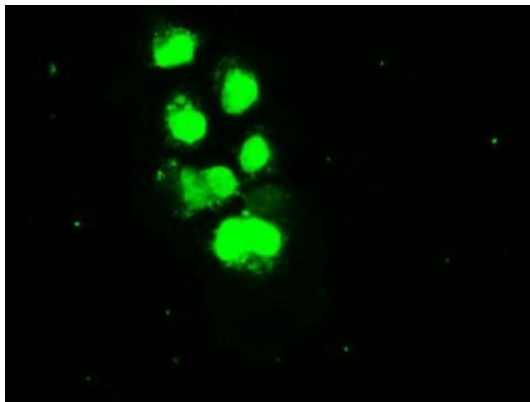
Western blot analysis of extracts (35ug) from 9 different cell lines by using anti-SSB monoclonal antibody.



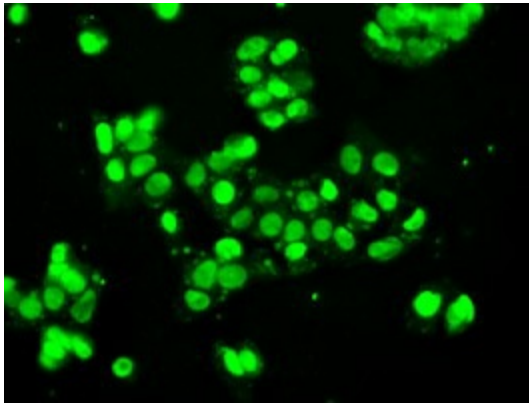
Western blot analysis of extracts (10ug) from a mouse cell line and 3 different mouse tissues by using anti-SSB monoclonal antibody (1:200).



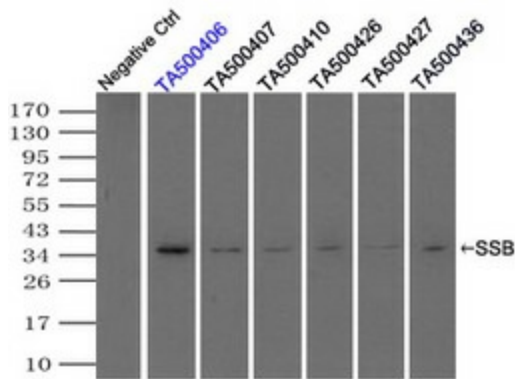
Western blot analysis of extracts (10ug) from 10 Human tissue by using anti-SSB monoclonal antibody at 1:1000 (1: Testis; 2: Omentum; 3: Uterus; 4: Breast; 5: Brain; 6: Liver; 7: Ovary; 8: Thyroid gland; 9: colon; 10: spleen).



Anti-SSB mouse monoclonal antibody ([TA500406]) immunofluorescent staining of COS7 cells transiently transfected by pCMV6-ENTRY SSB ([RC205013]).



Immunofluorescent staining of HepG2 cells using anti-SSB mouse monoclonal antibody (TA500406).



Immunoprecipitation (IP) of SSB by using TrueMab monoclonal anti-SSB antibodies (Negative control: IP without adding anti-SSB antibody.). For each experiment, 500ul of DDK tagged SSB overexpression lysates (at 1:5 dilution with HEK293T lysate), 2ug of anti-SSB antibody and 20ul (0.1mg) of goat anti-mouse conjugated magnetic beads were mixed and incubated overnight. After extensive wash to remove any non-specific binding, the immuno-precipitated products were analyzed with rabbit anti-DDK polyclonal antibody.

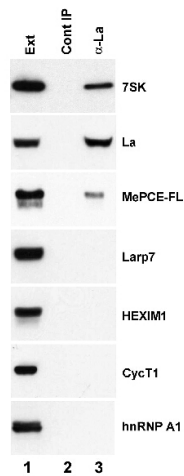
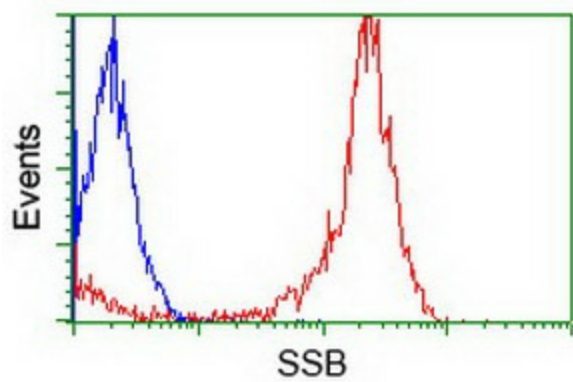


Figure from citation: Immunoprecipitation of SSB (La) protein level by using anti-SSB antibody in HeLa cells. [View Citation](#)



Flow cytometric Analysis of Jurkat cells, using anti-SSB antibody ([TA500406]), (Red), compared to a nonspecific negative control antibody, (Blue).