

Product datasheet for **TA500404AM**

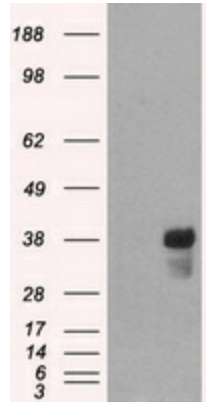
CD2 Mouse Monoclonal Antibody (Biotin conjugated) [Clone ID: OTI4E4]

Product data:

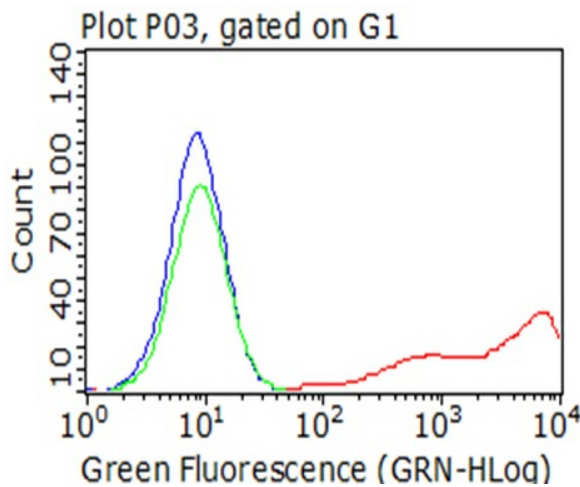
Product Type:	Primary Antibodies
Clone Name:	OTI4E4
Applications:	FC, IHC, WB
Recommended Dilution:	WB 1:2000, FC 1:100
Reactivity:	Human
Host:	Mouse
Isotype:	IgG1
Clonality:	Monoclonal
Immunogen:	Full-length protein expressed in 293T cell transfected with human CD2 expression vector
Formulation:	PBS (pH 7.3) containing 1% BSA, 50% glycerol and 0.02% sodium azide.
Concentration:	0.5 mg/ml
Purification:	Purified from mouse ascites fluids or tissue culture supernatant by affinity chromatography (protein A/G)
Conjugation:	Biotin
Storage:	Store at -20°C as received.
Stability:	Stable for 12 months from date of receipt.
Predicted Protein Size:	39.4 kDa
Gene Name:	CD2 molecule
Database Link:	NP_001758 Entrez Gene 914 Human P06729
Background:	CD2 interacts with lymphocyte function-associated antigen (LFA-3) and CD48/BCM1 to mediate adhesion between T-cells and other cell types. CD2 is implicated in the triggering of T-cells, the cytoplasmic domain is implicated in the signaling function
Synonyms:	LFA-2; SRBC; T11
Protein Families:	Druggable Genome, Transmembrane
Protein Pathways:	Cell adhesion molecules (CAMs), Hematopoietic cell lineage



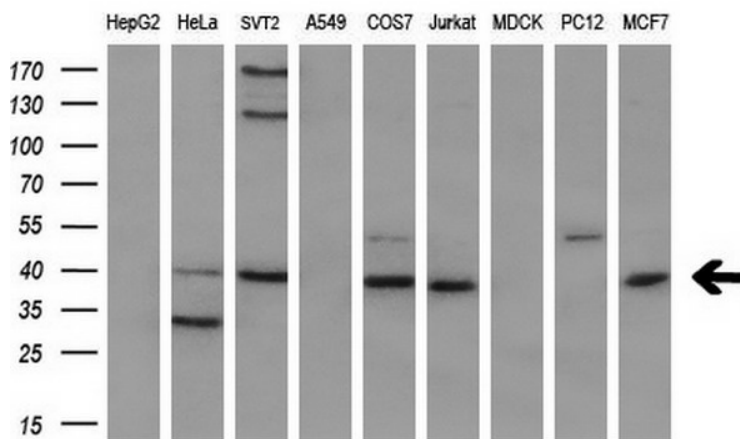
[View online »](#)

Product images:


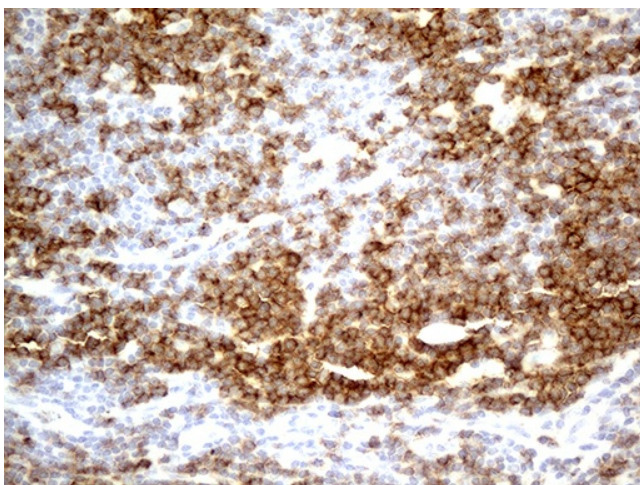
HEK293T cells were transfected with the pCMV6-ENTRY control (Left lane) or pCMV6-ENTRY CD2 ([RC206612], Right lane) cDNA for 48 hrs and lysed. Equivalent amounts of cell lysates (5 ug per lane) were separated by SDS-PAGE and immunoblotted with anti-CD2. Positive lysates [LY400671] (100ug) and [LC400671] (20ug) can be purchased separately from OriGene.



Flow cytometric analysis of living 293T cells transfected with CD2 overexpression plasmid ([RC206612], Red)/empty vector ([PS100001], Blue) using anti-CD2 antibody ([TA500404]). Cells incubated with a non-specific antibody (Green) were used as isotype control (1:100).



Western blot analysis of extracts (35ug) from 9 different cell lines by using anti-CD2 monoclonal antibody (HepG2: human; HeLa: human; SVT2: mouse; A549: human; COS7: monkey; Jurkat: human; MDCK: canine; PC12: rat; MCF7: human) (1:200).



Immunohistochemical staining of paraffin-embedded Human lymphoma tissue using anti-CD2 mouse monoclonal antibody. (Heat-induced epitope retrieval by 1mM EDTA in 10mM Tris buffer (pH8.5) at 120°C for 3min, [TA500404]) (1:500)